

По вопросам продаж и поддержки обращайтесь:

Самары (7273)495-231
Архангельск (3955)60-70-56
Архангельск (8182)63-90-72
Астрахань (8512)99-46-04
Барнаул (3852)73-04-60
Белгород (4722)40-23-64
Благовещенск (4162)22-76-07
Брянск (4832)59-03-52
Владивосток (423)249-28-31
Владикавказ (8672)28-90-48
Владимир (4922)49-43-18
Волгоград (844)278-03-48
Вологда (8172)26-41-59
Воронеж (473)204-51-73
Екатеринбург (343)384-55-89
Иваново (4932)77-34-06
Ижевск (3412)26-03-58
Иркутск (395)279-98-46
Казань (843)206-01-48

Калининград (4012)72-03-81
Калуга (4842)92-23-67
Кемерово (3842)65-04-62
Киров (8332)68-02-04
Коломна (4966)23-41-49
Кострома (4942)77-07-48
Краснодар (861)203-40-90
Красноярск (391)204-63-61
Курган (3522)50-90-47
Курск (4712)77-13-04
Липецк (4742)52-20-81
Магнитогорск (3519)55-03-13
Москва (495)268-04-70
Мурманск (8152)59-64-93
Набережные Челны (8552)20-53-41
Нижний Новгород (831)429-08-12
Новокузнецк (3843)20-46-81
Новосибирск (383)227-86-73
Ноябрьск (3496)41-32-12

Омск (3812)21-46-40
Орел (4862)44-53-42
Оренбург (3532)37-68-04
Пенза (8412)22-31-16
Пермь (342)205-81-47
Петрозаводск (8142)55-98-37
Псков (8112)59-10-37
Ростов-на-Дону (863)308-18-15
Рязань (4912)46-61-64
Самара (846)206-03-16
Санкт-Петербург (812)309-46-40
Саранск (8342)22-96-24
Саратов (845)249-38-78
Севастополь (8692)22-31-93
Симферополь (3652)67-13-56
Смоленск (4812)29-41-54
Сочи (862)225-72-31
Ставрополь (8652)20-65-13
Сургут (3462)77-98-35

Сыктывкар (8212)25-95-17
Тамбов (4752)50-40-97
Тверь (4822)63-31-35
Тольятти (8482)63-91-07
Томск (3822)98-41-53
Тула (4872)33-79-87
Тюмень (3452)66-21-18
Улан-Удэ (3012)59-97-51
Ульяновск (8422)24-23-59
Уфа (347)229-48-12
Хабаровск (4212)92-98-04
Чебоксары (8352)28-53-07
Челябинск (351)202-03-61
Череповец (8202)49-02-64
Чита (3022)38-34-83
Якутск (4112)23-90-97
Ярославль (4852)69-52-93

Россия +7(495)268-04-70

Казахстан +7(7172)727-132

Киргизия +996(312)96-26-47

<https://abbdrives.nt-rt.ru/> || aei@nt-rt.ru

ПРОГРАММИРУЕМЫЕ ЛОГИЧЕСКИЕ КОНТРОЛЛЕРЫ техническое описание на терминальные модули TU



PRODUCT-DETAILS

TU516-H-XC

I/O terminal unit. For analog and 24 VDC digital modules. Spring terminals. Hot Swap (TU516-H-XC)



General Information

Extended Product Type	TU516-H-XC
Product ID	1SAP415000R0001
ABB Type Designation	TU516-H-XC
EAN	4013614531743
Catalog Description	I/O terminal unit. For analog and 24 VDC digital modules. Spring terminals. Hot Swap (TU516-H-XC)
Long Description	TU516-H-XC: S500 I/O terminal unit. For analog and 24 VDC digital modules. Spring terminals. Hot Swap. eXtreme Conditions

Ordering

Country of Origin	Germany (DE) United States (US) Finland (FI)
CN8	85389091
Invoice Description	I/O terminal unit. For analog and 24 VDC digital modules. Spring terminals. Hot Swap (TU516-H-XC)
Made To Order	No
Minimum Order Quantity	1 piece
Order Multiple	1 piece
Selling Unit of Measure	piece

Dimensions

Product Net Weight	0.16 kg
Product Net Depth / Length	28 mm
Product Net Height	135 mm
Product Net Width	67.5 mm
Gross Weight	0.19 kg
Package Level 1 Depth / Length	147 mm
Package Level 1 Height	40 mm
Package Level 1 Width	78 mm
Package Level 1 Units	1 carton

Technical

Function	For analog and 24 VDC digital modules. Spring terminals. Hot Swap
Degree of Protection	IP20

Additional Information

Product Main Type	TU516
Product Name	Distributed Automation I/Os

Classifications

EPLAN Catalog Tree	Electrical engineering / PLC / General
ETIM 8	EC000810 - PLC mounting rack
UNSPSC	32151703

Environmental

WEEE B2C / B2B	Business To Business
WEEE Category	5. Small Equipment (No External Dimension More Than 50 cm)

Categories

PLC Automation → Programmable Logic Controllers PLCs → AC500-XC → S500 I/O modules



PRODUCT-DETAILS

TU516-XC

I/O terminal unit. For analog and 24 VDC digital modules. Spring terminals (TU516-XC)



General Information

Extended Product Type	TU516-XC
Product ID	1SAP412000R0001
ABB Type Designation	TU516-XC
EAN	4016779846387
Catalog Description	I/O terminal unit. For analog and 24 VDC digital modules. Spring terminals (TU516-XC)
Long Description	TU516-XC: S500 I/O terminal unit. For analog and 24 VDC digital modules. Spring terminals. eXtreme Conditions

Ordering

Country of Origin	Germany (DE) Finland (FI)
CN8	85389091
Invoice Description	I/O terminal unit. For analog and 24 VDC digital modules. Spring terminals (TU516-XC)
Made To Order	No
Minimum Order Quantity	1 piece
Order Multiple	1 piece
Selling Unit of Measure	piece

Dimensions

Product Net Weight	0.16 kg
Product Net Depth / Length	28 mm

Product Net Height	135 mm
Product Net Width	67.5 mm
Gross Weight	0.19 kg
Package Level 1 Depth / Length	147 mm
Package Level 1 Height	40 mm
Package Level 1 Width	78 mm
Package Level 1 Units	1 carton

Technical

Function	For analog and 24 VDC digital modules. Spring terminals
Degree of Protection	IP20
Ambient Air Temperature	Operation -30...+70 °C Storage -40...+85 °C

Additional Information

Product Main Type	TU516
Product Name	Distributed Automation I/Os

Classifications

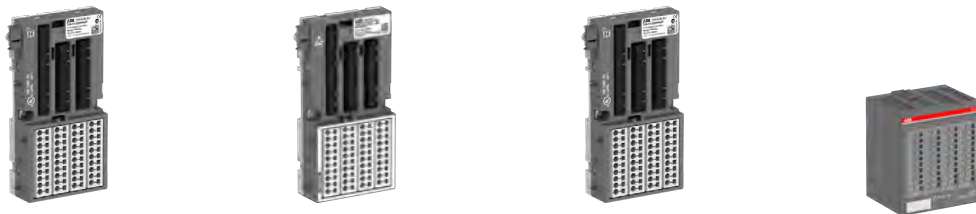
EPLAN Catalog Tree	Electrical engineering / PLC / General
ETIM 8	EC000810 - PLC mounting rack
UNSPSC	32151703

Environmental

WEEE B2C / B2B	Business To Business
WEEE Category	5. Small Equipment (No External Dimension More Than 50 cm)

Categories

PLC Automation → Programmable Logic Controllers PLCs → AC500-XC → S500 I/O modules



PRODUCT-DETAILS

TU532-H-XC

I/O terminal unit. For 230 VAC and relay modules. Spring terminals. Hot Swap (TU532-H-XC)



General Information

Extended Product Type	TU532-H-XC
Product ID	1SAP415100R0001
ABB Type Designation	TU532-H-XC
EAN	4013614531750
Catalog Description	I/O terminal unit. For 230 VAC and relay modules. Spring terminals. Hot Swap (TU532-H-XC)
Long Description	TU532-H-XC: S500 I/O terminal unit. For 230 VAC and relay modules. Spring terminals. Hot Swap. eXtreme Conditions

Ordering

Country of Origin	Germany (DE) United States (US) Finland (FI)
CN8	85389091
Invoice Description	I/O terminal unit. For 230 VAC and relay modules. Spring terminals. Hot Swap (TU532-H-XC)
Made To Order	No
Minimum Order Quantity	1 piece
Order Multiple	1 piece
Selling Unit of Measure	piece

Dimensions

Product Net Weight	0.167 kg
--------------------	----------

Product Net Depth / Length	28 mm
Product Net Height	135 mm
Product Net Width	67.5 mm
Gross Weight	0.197 kg
Package Level 1 Depth / Length	147 mm
Package Level 1 Height	40 mm
Package Level 1 Width	78 mm
Package Level 1 Units	1 carton

Technical

Function	For 230 VAC and relay modules. Spring terminals. Hot Swap
Degree of Protection	IP20

Additional Information

Product Main Type	TU532
Product Name	Distributed Automation I/Os

Classifications

EPLAN Catalog Tree	Electrical engineering / PLC / General
ETIM 8	EC000810 - PLC mounting rack
UNSPSC	32151703

Environmental

WEEE B2C / B2B	Business To Business
WEEE Category	5. Small Equipment (No External Dimension More Than 50 cm)

Categories

PLC Automation → Programmable Logic Controllers PLCs → AC500-XC → S500 I/O modules



PRODUCT-DETAILS

TU532-XC

I/O terminal unit. For 230 VAC and relay modules. Spring terminals (TU532-XC)



General Information

Extended Product Type	TU532-XC
Product ID	1SAP417000R0001
ABB Type Designation	TU532-XC
EAN	4016779846394
Catalog Description	I/O terminal unit. For 230 VAC and relay modules. Spring terminals (TU532-XC)
Long Description	TU532-XC: S500 I/O terminal unit. For 230 VAC and relay modules. Spring terminals. eXtreme Conditions

Ordering

Country of Origin	Germany (DE) Finland (FI)
CN8	85389091
Invoice Description	I/O terminal unit. For 230 VAC and relay modules. Spring terminals (TU532-XC)
Made To Order	No
Minimum Order Quantity	1 piece
Order Multiple	1 piece
Selling Unit of Measure	piece

Dimensions

Product Net Weight	0.165 kg
Product Net Depth / Length	28 mm
Product Net Height	135 mm
Product Net Width	67.5 mm
Gross Weight	0.195 kg
Package Level 1 Depth / Length	147 mm
Package Level 1 Height	40 mm
Package Level 1 Width	78 mm
Package Level 1 Units	1 carton

Technical

Function	For 230 VAC and relay modules. Spring terminals
Degree of Protection	IP20
Ambient Air Temperature	Operation -30...+70 °C Storage -40...+85 °C

Additional Information

Product Main Type	TU532
Product Name	Distributed Automation I/Os

Classifications

EPLAN Catalog Tree	Electrical engineering / PLC / General
ETIM 8	EC000810 - PLC mounting rack
UNSPSC	32151703

Environmental

WEEE B2C / B2B	Business To Business
WEEE Category	5. Small Equipment (No External Dimension More Than 50 cm)

Categories

PLC Automation → Programmable Logic Controllers PLCs → AC500-XC → S500 I/O modules



PRODUCT-DETAILS

TU542-H-XC

I/O terminal unit. For 24 VDC high current modules. Spring terminals. Hot Swap (TU542-H-XC)



General Information

Extended Product Type	TU542-H-XC
Product ID	1SAP415200R0001
ABB Type Designation	TU542-H-XC
EAN	4013614531767
Catalog Description	I/O terminal unit. For 24 VDC high current modules. Spring terminals. Hot Swap (TU542-H-XC)
Long Description	TU542-H-XC: S500 I/O terminal unit. For 24 VDC high current modules. Spring terminals. Hot Swap. eXtreme Conditions

Ordering

Country of Origin	Germany (DE) United States (US) Finland (FI)
CN8	85389091
Invoice Description	I/O terminal unit. For 24 VDC high current modules. Spring terminals. Hot Swap (TU542-H-XC)
Made To Order	No
Minimum Order Quantity	1 piece
Order Multiple	1 piece
Selling Unit of Measure	piece

Dimensions

Product Net Weight	0.165 kg
--------------------	----------

Product Net Depth / Length	28 mm
Product Net Height	135 mm
Product Net Width	67.5 mm
Gross Weight	0.195 kg
Package Level 1 Depth / Length	147 mm
Package Level 1 Height	40 mm
Package Level 1 Width	78 mm
Package Level 1 Units	1 carton

Technical

Function	For 24 VDC high current modules. Spring terminals. Hot Swap
Degree of Protection	IP20

Additional Information

Product Main Type	TU542
Product Name	Distributed Automation I/Os

Classifications

EPLAN Catalog Tree	Electrical engineering / PLC / General
ETIM 8	EC000810 - PLC mounting rack
UNSPSC	32151703

Environmental

WEEE B2C / B2B	Business To Business
WEEE Category	5. Small Equipment (No External Dimension More Than 50 cm)

Categories

PLC Automation → Programmable Logic Controllers PLCs → AC500-XC → S500 I/O modules



PRODUCT-DETAILS

TU542-XC

I/O terminal unit. For 24 VDC high current modules. Spring terminals (TU542-XC)



General Information

Extended Product Type	TU542-XC
Product ID	1SAP413200R0001
ABB Type Designation	TU542-XC
EAN	4013614529528
Catalog Description	I/O terminal unit. For 24 VDC high current modules. Spring terminals (TU542-XC)
Long Description	TU542-XC: S500 I/O terminal unit. For 24 VDC high current modules. Spring terminals. eXtreme Conditions

Ordering

Country of Origin	Germany (DE) United States (US) Finland (FI)
CN8	85389091
Invoice Description	I/O terminal unit. For 24 VDC high current modules. Spring terminals (TU542-XC)
Made To Order	No
Minimum Order Quantity	1 piece
Order Multiple	1 piece
Selling Unit of Measure	piece

Dimensions

Product Net Weight	0.164 kg
Product Net Depth / Length	28 mm
Product Net Height	135 mm
Product Net Width	67.5 mm
Gross Weight	0.194 kg
Package Level 1 Depth / Length	147 mm
Package Level 1 Height	40 mm
Package Level 1 Width	78 mm
Package Level 1 Units	1 carton

Technical

Function	For 24 VDC high current modules. Spring terminals
Degree of Protection	IP20

Additional Information

Product Main Type	TU542
Product Name	Distributed Automation I/Os

Classifications

EPLAN Catalog Tree	Electrical engineering / PLC / General
ETIM 8	EC000810 - PLC mounting rack
UNSPSC	32151703

Environmental

WEEE B2C / B2B	Business To Business
WEEE Category	5. Small Equipment (No External Dimension More Than 50 cm)

Categories

PLC Automation → Programmable Logic Controllers PLCs → AC500-XC → S500 I/O modules



PRODUCT-DETAILS

TU582-S-XC

I/O terminal unit. For safety I/O Modules.
24VDC. Spring terminals (TU582-S-XC)



General Information

Extended Product Type	TU582-S-XC
Product ID	1SAP481200R0001
ABB Type Designation	TU582-S-XC
EAN	4016779866194
Catalog Description	I/O terminal unit. For safety I/O Modules. 24VDC. Spring terminals (TU582-S-XC)
Long Description	TU582-S-XC: S500 I/O terminal unit. For safety I/O Modules. 24VDC. Spring terminals. eXtreme Conditions

Ordering

Country of Origin	Germany (DE) Finland (FI)
CN8	85389091
Invoice Description	I/O terminal unit. For safety I/O Modules. 24VDC. Spring terminals (TU582-S-XC)
Made To Order	No
Minimum Order Quantity	1 piece
Order Multiple	1 piece
Selling Unit of Measure	piece

Dimensions

Product Net Weight	0.164 kg
Product Net Depth / Length	28 mm
Product Net Height	135 mm
Product Net Width	67.5 mm
Gross Weight	0.197 kg
Package Level 1 Depth / Length	147 mm
Package Level 1 Height	40 mm
Package Level 1 Width	78 mm
Package Level 1 Units	1 carton

Technical

Function	For safety I/O Modules. 24VDC. Spring terminals
Degree of Protection	IP20
Safety Integrity Level (SIL)	2
Ambient Air Temperature	Operation -30...+70 °C Storage -40...+85 °C

Additional Information

Product Main Type	TU582
Product Name	Distributed Automation I/Os

Classifications

eClass	27-24-22-92
EPLAN Catalog Tree	Electrical engineering / PLC / General
ETIM 8	EC000810 - PLC mounting rack
UNSPSC	32151703

Environmental

WEEE B2C / B2B	Business To Business
WEEE Category	5. Small Equipment (No External Dimension More Than 50 cm)



PRODUCT-DETAILS

TU507-ETH

Interface terminal unit. For Ethernet protocols.
Screw terminals (TU507-ETH)



General Information

Extended Product Type	TU507-ETH
Product ID	1SAP214200R0001
ABB Type Designation	TU507-ETH
EAN	4016779649216
Catalog Description	Interface terminal unit. For Ethernet protocols. Screw terminals (TU507-ETH)
Long Description	TU507-ETH: S500 Interface terminal unit. For Ethernet protocols. Screw terminals. 2 RJ45 connectors.

Ordering

Country of Origin	Germany (DE) Finland (FI)
CN8	85389091
Invoice Description	Interface terminal unit. For Ethernet protocols. Screw terminals (TU507-ETH)
Made To Order	No
Minimum Order Quantity	1 piece
Order Multiple	1 piece
Selling Unit of Measure	piece

Dimensions

Product Net Weight	0.223 kg
Product Net Depth / Length	28 mm

Product Net Height	135 mm
Product Net Width	67.5 mm
Gross Weight	0.256 kg
Package Level 1 Depth / Length	147 mm
Package Level 1 Height	40 mm
Package Level 1 Width	78 mm
Package Level 1 Units	1 carton

Technical

Function	For Ethernet protocols. Screw terminals
Degree of Protection	IP20
Supply Voltage	24 V DC
Ambient Air Temperature	Operation 0 ... +60 °C Storage -40 ... +70 °C

Additional Information

Product Main Type	TU507
Product Name	Distributed Automation I/Os

Classifications

eClass	27-24-22-92
EPLAN Catalog Tree	Electrical engineering / PLC / General
ETIM 8	EC000810 - PLC mounting rack
UNSPSC	32151703

Environmental

SCIP	fd57bbb7-ce16-4ef8-9dba-83720ed19276 Germany (DE)
WEEE B2C / B2B	Business To Business
WEEE Category	5. Small Equipment (No External Dimension More Than 50 cm)

Categories

PLC Automation → Programmable Logic Controllers PLCs → AC500 → Communication interface modules



PRODUCT-DETAILS

TU507-ETH

Interface terminal unit. For Ethernet protocols.
Screw terminals (TU507-ETH)



General Information

Extended Product Type	TU507-ETH
Product ID	1SAP214200R0001
ABB Type Designation	TU507-ETH
EAN	4016779649216
Catalog Description	Interface terminal unit. For Ethernet protocols. Screw terminals (TU507-ETH)
Long Description	TU507-ETH: S500 Interface terminal unit. For Ethernet protocols. Screw terminals. 2 RJ45 connectors.

Ordering

Country of Origin	Germany (DE) Finland (FI)
CN8	85389091
Invoice Description	Interface terminal unit. For Ethernet protocols. Screw terminals (TU507-ETH)
Made To Order	No
Minimum Order Quantity	1 piece
Order Multiple	1 piece
Selling Unit of Measure	piece

Dimensions

Product Net Weight	0.223 kg
Product Net Depth / Length	28 mm

Product Net Height	135 mm
Product Net Width	67.5 mm
Gross Weight	0.256 kg
Package Level 1 Depth / Length	147 mm
Package Level 1 Height	40 mm
Package Level 1 Width	78 mm
Package Level 1 Units	1 carton

Technical

Function	For Ethernet protocols. Screw terminals
Degree of Protection	IP20
Supply Voltage	24 V DC
Ambient Air Temperature	Operation 0 ... +60 °C Storage -40 ... +70 °C

Additional Information

Product Main Type	TU507
Product Name	Distributed Automation I/Os

Classifications

eClass	27-24-22-92
EPLAN Catalog Tree	Electrical engineering / PLC / General
ETIM 8	EC000810 - PLC mounting rack
UNSPSC	32151703

Environmental

SCIP	fd57bbb7-ce16-4ef8-9dba-83720ed19276 Germany (DE)
WEEE B2C / B2B	Business To Business
WEEE Category	5. Small Equipment (No External Dimension More Than 50 cm)

Categories

PLC Automation → Programmable Logic Controllers PLCs → AC500 → Communication interface modules



PRODUCT-DETAILS

TU508-ETH

Interface terminal unit. For Ethernet protocols. Spring terminals (TU508-ETH)



General Information

Extended Product Type	TU508-ETH
Product ID	1SAP214000R0001
ABB Type Designation	TU508-ETH
EAN	4016779649612
Catalog Description	Interface terminal unit. For Ethernet protocols. Spring terminals (TU508-ETH)
Long Description	TU508-ETH: S500 Interface terminal unit. For Ethernet protocols. Spring terminals. 2 RJ45 connectors.

Ordering

Country of Origin	Germany (DE) Finland (FI)
CN8	85389091
Invoice Description	Interface terminal unit. For Ethernet protocols. Spring terminals (TU508-ETH)
Made To Order	No
Minimum Order Quantity	1 piece
Order Multiple	1 piece
Selling Unit of Measure	piece

Dimensions

Product Net Weight	0.168 kg
Product Net Depth / Length	28 mm
Product Net Height	135 mm
Product Net Width	67.5 mm
Gross Weight	0.2 kg
Package Level 1 Depth / Length	147 mm
Package Level 1 Height	40 mm
Package Level 1 Width	78 mm
Package Level 1 Units	1 carton

Technical

Function	For Ethernet protocols. Spring terminals
Degree of Protection	IP20
Supply Voltage	24 V DC
Ambient Air Temperature	Operation 0 ... +60 °C Storage -40 ... +70 °C

Additional Information

Product Main Type	TU508
Product Name	Distributed Automation I/Os

Classifications

eClass	27-24-22-92
EPLAN Catalog Tree	Electrical engineering / PLC / General
ETIM 8	EC000810 - PLC mounting rack
UNSPSC	32151703

Environmental

SCIP	f1c51aad-1de0-4120-827a-874c3b22f529 Germany (DE)
WEEE B2C / B2B	Business To Business
WEEE Category	5. Small Equipment (No External Dimension More Than 50 cm)



PRODUCT-DETAILS

TU508-ETH-XC

Interface terminal unit. For Ethernet protocols. Spring terminals (TU508-ETH-XC)



General Information

Extended Product Type	TU508-ETH-XC
Product ID	1SAP414000R0001
ABB Type Designation	TU508-ETH-XC
EAN	4016779846370
Catalog Description	Interface terminal unit. For Ethernet protocols. Spring terminals (TU508-ETH-XC)
Long Description	TU508-ETH-XC: S500 Interface terminal unit. For Ethernet protocols. Spring terminals. 2 RJ45 connectors. eXtreme Conditions

Ordering

Country of Origin	Germany (DE) Finland (FI)
CN8	85389091
Invoice Description	Interface terminal unit. For Ethernet protocols. Spring terminals (TU508-ETH-XC)
Made To Order	No
Minimum Order Quantity	1 piece
Order Multiple	1 piece
Selling Unit of Measure	piece

Dimensions

Product Net Weight	0.17 kg
Product Net Depth / Length	28 mm
Product Net Height	135 mm
Product Net Width	67.5 mm
Gross Weight	0.202 kg
Package Level 1 Depth / Length	147 mm
Package Level 1 Height	40 mm
Package Level 1 Width	78 mm
Package Level 1 Units	1 carton

Technical

Function	For Ethernet protocols. Spring terminals
Degree of Protection	IP20
Ambient Air Temperature	Operation -30...+70 °C Storage -40...+85 °C

Additional Information

Product Main Type	TU508
Product Name	Distributed Automation I/Os

Classifications

EPLAN Catalog Tree	Electrical engineering / PLC / General
ETIM 8	EC000810 - PLC mounting rack
UNSPSC	32151703

Environmental

SCIP	72ec586c-fd6b-4850-b9dd-4788133c1d92 Germany (DE)
WEEE B2C / B2B	Business To Business
WEEE Category	5. Small Equipment (No External Dimension More Than 50 cm)



PRODUCT-DETAILS

TU509

Interface terminal unit. For serial protocols.
Screw terminals. D-Sub 9 connector (TU509)



General Information

Extended Product Type	TU509
Product ID	1SAP211000R0001
ABB Type Designation	TU509
EAN	4016779866286
Catalog Description	Interface terminal unit. For serial protocols. Screw terminals. D-Sub 9 connector (TU509)
Long Description	TU509: S500 Interface terminal unit. For serial protocols. Screw terminals. D-Sub 9 connector.

Ordering

Country of Origin	Germany (DE) Finland (FI)
CN8	85389091
Invoice Description	Interface terminal unit. For serial protocols. Screw terminals. D-Sub 9 connector (TU509)
Made To Order	No
Minimum Order Quantity	1 piece
Selling Unit of Measure	piece

Dimensions

Product Net Weight	0.216 kg
--------------------	----------

Product Net Depth / Length	28 mm
Product Net Height	135 mm
Product Net Width	67.5 mm
Gross Weight	0.249 kg
Package Level 1 Depth / Length	147 mm
Package Level 1 Height	40 mm
Package Level 1 Width	78 mm
Package Level 1 Units	1 carton

Technical

Function	For serial protocols. Screw terminals. D-Sub 9 connector
Degree of Protection	IP20

Additional Information

Product Main Type	TU509
Product Name	TU509:S500,Bus-Klemm.block,Sch

Classifications

eClass	27-24-22-92
EPLAN Catalog Tree	Electrical engineering / PLC / General
ETIM 8	EC000810 - PLC mounting rack
UNSPSC	32151703

Environmental

WEEE B2C / B2B	Business To Business
WEEE Category	5. Small Equipment (No External Dimension More Than 50 cm)

Categories

PLC Automation → Programmable Logic Controllers PLCs → AC500 → Communication interface modules



PRODUCT-DETAILS

TU510

Interface terminal unit. For serial protocols.
Spring terminals. D-Sub 9 connector (TU510)



General Information

Extended Product Type	TU510
Product ID	1SAP210800R0001
ABB Type Designation	TU510
EAN	4016779866293
Catalog Description	Interface terminal unit. For serial protocols. Spring terminals. D-Sub 9 connector (TU510)
Long Description	TU510: S500 Interface terminal unit. For serial protocols. Spring terminals. D-Sub 9 connector.

Ordering

Country of Origin	Germany (DE) United States (US) Finland (FI)
CN8	85389091
Invoice Description	Interface terminal unit. For serial protocols. Spring terminals. D-Sub 9 connector (TU510)
Made To Order	No
Minimum Order Quantity	1 piece
Order Multiple	1 piece
Selling Unit of Measure	piece

Dimensions

Product Net Weight	0.159 kg 28 mm
--------------------	-------------------

Length	
Product Net Height	135 mm
Product Net Width	67.5 mm
Gross Weight	0.192 kg
Package Level 1 Depth / Length	147 mm
Package Level 1 Height	40 mm
Package Level 1 Width	78 mm
Package Level 1 Units	1 carton

Technical

Function	For serial protocols. Spring terminals. D-Sub 9 connector
Degree of Protection	IP20

Additional Information

Product Main Type	TU510
Product Name	Distributed Automation I/Os

Classifications

eClass	27-24-22-92
EPLAN Catalog Tree	Electrical engineering / PLC / General
ETIM 8	EC000810 - PLC mounting rack
UNSPSC	32151703

Environmental

WEEE B2C / B2B	Business To Business
WEEE Category	5. Small Equipment (No External Dimension More Than 50 cm)

Categories

PLC Automation → Programmable Logic Controllers PLCs → AC500 → Communication interface modules



PRODUCT-DETAILS

TU510-XC

Interface terminal unit. For serial protocols.
Spring terminals. D-Sub 9 connector (TU510-
XC)



General Information

Extended Product Type	TU510-XC
Product ID	1SAP410800R0001
ABB Type Designation	TU510-XC
EAN	4016779866378
Catalog Description	Interface terminal unit. For serial protocols. Spring terminals. D-Sub 9 connector (TU510-XC)
Long Description	TU510-XC: S500 Interface terminal unit. For serial protocols. Spring terminals. D-Sub 9 connector. eXtreme Conditions

Ordering

Country of Origin	Germany (DE) Finland (FI)
CN8	85389091
Invoice Description	Interface terminal unit. For serial protocols. Spring terminals. D-Sub 9 connector (TU510-XC)
Made To Order	No
Minimum Order Quantity	1 piece
Order Multiple	1 piece
Selling Unit of Measure	piece

Dimensions

Product Net Weight	0.161 kg
Product Net Depth / Length	28 mm
Product Net Height	135 mm
Product Net Width	67.5 mm
Gross Weight	0.194 kg
Package Level 1 Depth / Length	147 mm
Package Level 1 Height	40 mm
Package Level 1 Width	78 mm
Package Level 1 Units	1 carton

Technical

Function	For serial protocols. Spring terminals. D-Sub 9 connector
Degree of Protection	IP20
Ambient Air Temperature	Operation -30...+70 °C Storage -40...+85 °C

Additional Information

Product Main Type	TU510
Product Name	Distributed Automation I/Os

Classifications

EPLAN Catalog Tree	Electrical engineering / PLC / General
ETIM 8	EC000810 - PLC mounting rack
UNSPSC	32151703

Environmental

WEEE B2C / B2B	Business To Business
WEEE Category	5. Small Equipment (No External Dimension More Than 50 cm)

Categories

PLC Automation → Programmable Logic Controllers PLCs → AC500-XC → Communication interface modules



PRODUCT-DETAILS

TU514-KBA

TU514:S500,I/O Term.Unit spring KBA



General Information

Extended Product Type	TU514-KBA
Product ID	1SVP426374R1000
ABB Type Designation	TU514-KBA
Catalog Description	TU514:S500,I/O Term.Unit spring KBA
Long Description	TU514:S500,I/O Term.Unit spring KBA for 32E/A Module DC511.1-wire

Additional Information

ABB Type Designation	TU514-KBA
CN8	85389091
Country of Origin	Germany (DE)
Customs Tariff Number	85389091
Frame Size	Undefined
Gross Weight	0.3 kg
Invoice Description	TU514:S500,I/O Term.Unit spring KBA
Made To Order	No
Minimum Order Quantity	1 piece
Order Multiple	1 piece
Product Main Type	TU514
Product Name	Distributed Automation I/Os
Product Net Depth / Length	79 mm
Product Net Height	112 mm
Product Net Weight	0.25 kg
Product Net Width	102 mm
Product Type	PLC-AC31-40/50
Quote Only	No
RoHS Status	No declaration needed
Selling Unit of Measure	piece
Short Description	TU514:S500,I/O Term.Unit spring KBA
Stocked At (Warehouses)	Menden, Germany
WEEE B2C / B2B	Business To Business
WEEE Category	5. Small Equipment (No External Dimension More Than 50 cm)

Categories

PLC Automation → Legacy products → AC31 and previous series → AC31 I/Os and previous series



PRODUCT-DETAILS

TU515

I/O terminal unit. For analog and 24 VDC digital modules. Screw terminals (TU515)



General Information

Extended Product Type	TU515
Product ID	1SAP212200R0001
ABB Type Designation	TU515
EAN	4016779649223
Catalog Description	I/O terminal unit. For analog and 24 VDC digital modules. Screw terminals (TU515)
Long Description	TU515: S500 I/O terminal unit. For analog and 24 VDC digital modules. Screw terminals.

Ordering

Country of Origin	Germany (DE) Finland (FI)
CN8	85389091
Invoice Description	I/O terminal unit. For analog and 24 VDC digital modules. Screw terminals (TU515)
Made To Order	No
Minimum Order Quantity	1 piece
Order Multiple	1 piece
Selling Unit of Measure	piece

Dimensions

Product Net Weight	0.232 kg
Product Net Depth / Length	28 mm

Product Net Height	135 mm
Product Net Width	67.5 mm
Gross Weight	0.262 kg
Package Level 1 Depth / Length	147 mm
Package Level 1 Height	40 mm
Package Level 1 Width	78 mm
Package Level 1 Units	1 carton

Technical

Function	For analog and 24 VDC digital modules. Screw terminals
Number of Analog Configurable I/Os	0
Degree of Protection	IP20
Supply Voltage	24 V DC
Ambient Air Temperature	Operation 0 ... +60 °C Storage -40 ... +70 °C

Additional Information

Product Main Type	TU515
Product Name	Distributed Automation I/Os

Classifications

eClass	27-24-22-92
EPLAN Catalog Tree	Electrical engineering / PLC / General
ETIM 8	EC000810 - PLC mounting rack
UNSPSC	32151703

Environmental

WEEE B2C / B2B	Business To Business
WEEE Category	5. Small Equipment (No External Dimension More Than 50 cm)

Categories

PLC Automation → Programmable Logic Controllers PLCs → AC500 → S500 I/O modules



PRODUCT-DETAILS

TU516

I/O terminal unit. For analog and 24 VDC digital modules. Spring terminals (TU516)



General Information

Extended Product Type	TU516
Product ID	1SAP212000R0001
ABB Type Designation	TU516
EAN	4016779649247
Catalog Description	I/O terminal unit. For analog and 24 VDC digital modules. Spring terminals (TU516)
Long Description	TU516: S500 I/O terminal unit. For analog and 24 VDC digital modules. Spring terminals.

Ordering

Country of Origin	Germany (DE) Finland (FI)
CN8	85389091
Invoice Description	I/O terminal unit. For analog and 24 VDC digital modules. Spring terminals (TU516)
Made To Order	No
Minimum Order Quantity	1 piece
Order Multiple	1 piece
Selling Unit of Measure	piece

Dimensions

Product Net Weight	0.159 kg
Product Net Depth / Length	28 mm

Product Net Height	135 mm
Product Net Width	67.5 mm
Gross Weight	0.188 kg
Package Level 1 Depth / Length	147 mm
Package Level 1 Height	40 mm
Package Level 1 Width	78 mm
Package Level 1 Units	1 carton

Technical

Function	For analog and 24 VDC digital modules. Spring terminals
Number of Analog Configurable I/Os	0
Degree of Protection	IP20
Supply Voltage	24 V DC
Ambient Air Temperature	Operation 0 ... +60 °C Storage -40 ... +70 °C

Additional Information

Product Main Type	TU516
Product Name	Distributed Automation I/Os

Classifications

eClass	27-24-22-92
EPLAN Catalog Tree	Electrical engineering / PLC / General
ETIM 8	EC000810 - PLC mounting rack
UNSPSC	32151703

Environmental

WEEE B2C / B2B	Business To Business
WEEE Category	5. Small Equipment (No External Dimension More Than 50 cm)

Categories

PLC Automation → Programmable Logic Controllers PLCs → AC500 → S500 I/O modules



PRODUCT-DETAILS

TU516-H

I/O terminal unit. For analog and 24 VDC digital modules. Spring terminals. Hot Swap (TU516-H)



General Information

Extended Product Type	TU516-H
Product ID	1SAP215000R0001
ABB Type Designation	TU516-H
EAN	4013614531712
Catalog Description	I/O terminal unit. For analog and 24 VDC digital modules. Spring terminals. Hot Swap (TU516-H)
Long Description	TU516-H: S500 I/O terminal unit. For analog and 24 VDC digital modules. Spring terminals. Hot Swap.

Ordering

Country of Origin	Germany (DE) United States (US) China (CN) Finland (FI)
CN8	85389091
Invoice Description	I/O terminal unit. For analog and 24 VDC digital modules. Spring terminals. Hot Swap (TU516-H)
Made To Order	No
Minimum Order Quantity	1 piece
Order Multiple	1 piece
Selling Unit of Measure	piece

Dimensions

Product Net Weight	0.159 kg
Product Net Depth / Length	28 mm
Product Net Height	135 mm
Product Net Width	67.5 mm
Gross Weight	0.19 kg
Package Level 1 Depth / Length	147 mm
Package Level 1 Height	40 mm
Package Level 1 Width	78 mm
Package Level 1 Units	1 carton

Technical

Function	For analog and 24 VDC digital modules. Spring terminals. Hot Swap
Degree of Protection	IP20

Additional Information

Product Main Type	TU516
Product Name	Distributed Automation I/Os

Classifications

eClass	27-24-22-92
EPLAN Catalog Tree	Electrical engineering / PLC / General
ETIM 8	EC000810 - PLC mounting rack
UNSPSC	32151703

Environmental

WEEE B2C / B2B	Business To Business
WEEE Category	5. Small Equipment (No External Dimension More Than 50 cm)

Categories

PLC Automation → Programmable Logic Controllers PLCs → AC500 → S500 I/O modules



PRODUCT-DETAILS

TU517

Interface terminal unit. For serial protocols.
Screw terminals (TU517)



General Information

Extended Product Type	TU517
Product ID	1SAP211400R0001
ABB Type Designation	TU517
EAN	4016779866309
Catalog Description	Interface terminal unit. For serial protocols. Screw terminals (TU517)
Long Description	TU517: S500 Interface terminal unit. For serial protocols. Screw terminals. Bus connection with terminals.

Ordering

Country of Origin	Germany (DE) Finland (FI)
CN8	85389091
Invoice Description	Interface terminal unit. For serial protocols. Screw terminals (TU517)
Made To Order	No
Minimum Order Quantity	1 piece
Selling Unit of Measure	piece

Dimensions

Product Net Weight	0.239 kg
Product Net Depth / Length	28 mm
Product Net Height	135 mm

Product Net Width	67.5 mm
Gross Weight	0.269 kg
Package Level 1 Depth / Length	147 mm
Package Level 1 Height	40 mm
Package Level 1 Width	78 mm
Package Level 1 Units	1 carton

Technical

Function	For serial protocols. Screw terminals
Degree of Protection	IP20

Additional Information

Product Main Type	TU517
Product Name	TU517:S500.Bus-Klemm.block.Sch

Classifications

eClass	27-24-22-92
EPLAN Catalog Tree	Electrical engineering / PLC / General
ETIM 8	EC000810 - PLC mounting rack
UNSPSC	32151703

Environmental

WEEE B2C / B2B	Business To Business
WEEE Category	5. Small Equipment (No External Dimension More Than 50 cm)

Categories

PLC Automation → Programmable Logic Controllers PLCs → AC500 → Communication interface modules



PRODUCT-DETAILS

TU518

Interface terminal unit. For serial protocols.
Spring terminals (TU518)



General Information

Extended Product Type	TU518
Product ID	1SAP211200R0001
ABB Type Designation	TU518
EAN	4016779866316
Catalog Description	Interface terminal unit. For serial protocols. Spring terminals (TU518)
Long Description	TU518: S500 Interface terminal unit. For serial protocols. Spring terminals.

Ordering

Country of Origin	Germany (DE) Finland (FI)
CN8	85389091
Invoice Description	Interface terminal unit. For serial protocols. Spring terminals (TU518)
Made To Order	No
Minimum Order Quantity	1 piece
Order Multiple	1 piece
Selling Unit of Measure	piece

Dimensions

Product Net Weight	0.161 kg 28 mm
--------------------	-------------------

Length	
Product Net Height	135 mm
Product Net Width	67.5 mm
Gross Weight	0.193 kg
Package Level 1 Depth / Length	147 mm
Package Level 1 Height	40 mm
Package Level 1 Width	78 mm
Package Level 1 Units	1 carton

Technical

Function	For serial protocols. Spring terminals
Degree of Protection	IP20

Additional Information

Product Main Type	TU518
Product Name	Distributed Automation I/Os

Classifications

eClass	27-24-22-92
EPLAN Catalog Tree	Electrical engineering / PLC / General
ETIM 8	EC000810 - PLC mounting rack
UNSPSC	32151703

Environmental

WEEE B2C / B2B	Business To Business
WEEE Category	5. Small Equipment (No External Dimension More Than 50 cm)

Categories

PLC Automation → Programmable Logic Controllers PLCs → AC500 → Communication interface modules



PRODUCT-DETAILS

TU518-XC

Interface terminal unit. For serial protocols.
Spring terminals (TU518-XC)



General Information

Extended Product Type	TU518-XC
Product ID	1SAP411200R0001
ABB Type Designation	TU518-XC
EAN	4016779866392
Catalog Description	Interface terminal unit. For serial protocols. Spring terminals (TU518-XC)
Long Description	TU518-XC: S500 Interface terminal unit. For serial protocols. Spring terminals. eXtreme Conditions

Ordering

Country of Origin	Germany (DE) Finland (FI)
CN8	85389091
Invoice Description	Interface terminal unit. For serial protocols. Spring terminals (TU518-XC)
Made To Order	No
Minimum Order Quantity	1 piece
Order Multiple	1 piece
Selling Unit of Measure	piece

Dimensions

Product Net Weight	0.162 kg
Product Net Depth / Length	28 mm

Product Net Height	135 mm
Product Net Width	67.5 mm
Gross Weight	0.195 kg
Package Level 1 Depth / Length	147 mm
Package Level 1 Height	40 mm
Package Level 1 Width	78 mm
Package Level 1 Units	1 carton

Technical

Function	For serial protocols. Spring terminals
Degree of Protection	IP20
Ambient Air Temperature	Operation -30...+70 °C Storage -40...+85 °C

Additional Information

Product Main Type	TU518
Product Name	Distributed Automation I/Os

Classifications

EPLAN Catalog Tree	Electrical engineering / PLC / General
ETIM 8	EC000810 - PLC mounting rack
UNSPSC	32151703

Environmental

WEEE B2C / B2B	Business To Business
WEEE Category	5. Small Equipment (No External Dimension More Than 50 cm)

Categories

PLC Automation → Programmable Logic Controllers PLCs → AC500-XC → Communication interface modules



PRODUCT-DETAILS

TU520-ETH

Interface terminal unit. For gateway module.
Pluggable spring terminal blocs (TU520-ETH)



General Information

Extended Product Type	TU520-ETH
Product ID	1SAP214400R0001
ABB Type Designation	TU520-ETH
EAN	4016779830645
Catalog Description	Interface terminal unit. For gateway module. Pluggable spring terminal blocs (TU520-ETH)
Long Description	TU520-ETH: S500 Interface terminal unit. For gateway module. Pluggable spring terminal blocs.

Ordering

Country of Origin	Germany (DE) Finland (FI)
CN8	85389091
Invoice Description	Interface terminal unit. For gateway module. Pluggable spring terminal blocs (TU520-ETH)
Made To Order	No
Minimum Order Quantity	1 piece
Order Multiple	1 piece
Selling Unit of Measure	piece

Dimensions

Product Net Weight	0.147 kg
Product Net Depth / Length	28 mm

Product Net Height	135 mm
Product Net Width	67.5 mm
Gross Weight	0.219 kg
Package Level 1 Depth / Length	84 mm
Package Level 1 Height	72 mm
Package Level 1 Width	71 mm
Package Level 1 Units	1 carton

Technical

Function	For gateway module. Pluggable spring terminal blocs
Degree of Protection	IP20

Additional Information

Product Main Type	TU520
Product Name	Distributed Automation I/Os

Classifications

eClass	27-24-22-92
EPLAN Catalog Tree	Electrical engineering / PLC / General
ETIM 8	EC000810 - PLC mounting rack
UNSPSC	32151703

Environmental

WEEE B2C / B2B	Business To Business
WEEE Category	5. Small Equipment (No External Dimension More Than 50 cm)

Categories

PLC Automation → Programmable Logic Controllers PLCs → AC500 → Communication interface modules



PRODUCT-DETAILS

TU520-ETH-XC

Interface terminal unit. For gateway module.
Pluggable spring terminal blocs (TU520-ETH-XC)



General Information

Extended Product Type	TU520-ETH-XC
Product ID	1SAP414400R0001
ABB Type Designation	TU520-ETH-XC
EAN	4016779866231
Catalog Description	Interface terminal unit. For gateway module. Pluggable spring terminal blocs (TU520-ETH-XC)
Long Description	TU520-ETH-XC: S500 Interface terminal unit. For gateway module. Pluggable spring terminal blocs. eXtreme Conditions

Ordering

Country of Origin	Germany (DE) Finland (FI)
CN8	85389091
Invoice Description	Interface terminal unit. For gateway module. Pluggable spring terminal blocs (TU520-ETH-XC)
Made To Order	No
Minimum Order Quantity	1 piece
Order Multiple	1 piece
Selling Unit of Measure	piece

Dimensions

Product Net Weight	0.146 kg 28 mm
--------------------	-------------------

Length	
Product Net Height	135 mm
Product Net Width	67.5 mm
Gross Weight	0.218 kg
Package Level 1 Depth / Length	84 mm
Package Level 1 Height	72 mm
Package Level 1 Width	71 mm
Package Level 1 Units	1 carton

Technical

Function	For gateway module. Pluggable spring terminal blocs	
Degree of Protection	IP20	
Ambient Air Temperature	Operation -30...+70 °C	Storage -40...+85 °C

Additional Information

Product Main Type	TU520
Product Name	Distributed Automation I/Os

Classifications

EPLAN Catalog Tree	Electrical engineering / PLC / General
ETIM 8	EC000810 - PLC mounting rack
UNSPSC	32151703

Environmental

WEEE B2C / B2B	Business To Business
WEEE Category	5. Small Equipment (No External Dimension More Than 50 cm)

Categories

PLC Automation → Programmable Logic Controllers PLCs → AC500-XC → Communication interface modules



PRODUCT-DETAILS

TU531

I/O terminal unit. For 230 VAC and relay modules. Screw terminals (TU531)



General Information

Extended Product Type	TU531
Product ID	1SAP217200R0001
ABB Type Designation	TU531
EAN	4016779649254
Catalog Description	I/O terminal unit. For 230 VAC and relay modules. Screw terminals (TU531)
Long Description	TU531: S500 I/O terminal unit. For 230 VAC and relay modules. Screw terminals.

Ordering

Country of Origin	Germany (DE) Finland (FI)
CN8	85389091
Invoice Description	I/O terminal unit. For 230 VAC and relay modules. Screw terminals (TU531)
Made To Order	No
Minimum Order Quantity	1 piece
Order Multiple	1 piece
Selling Unit of Measure	piece

Dimensions

Product Net Weight	0.238 kg
Product Net Depth / Length	28 mm
Product Net Height	135 mm

Product Net Width	67.5 mm
Gross Weight	0.269 kg
Package Level 1 Depth / Length	147 mm
Package Level 1 Height	40 mm
Package Level 1 Width	78 mm
Package Level 1 Units	1 carton

Technical

Function	For 230 VAC and relay modules. Screw terminals
Number of Analog Configurable I/Os	0
Degree of Protection	IP20
Supply Voltage	24 V DC
Ambient Air Temperature	Operation 0 ... +60 °C Storage -40 ... +70 °C

Additional Information

Product Main Type	TU531
Product Name	Distributed Automation I/Os

Classifications

eClass	27-24-22-92
EPLAN Catalog Tree	Electrical engineering / PLC / General
ETIM 8	EC000810 - PLC mounting rack
UNSPSC	32151703

Environmental

WEEE B2C / B2B	Business To Business
WEEE Category	5. Small Equipment (No External Dimension More Than 50 cm)

Categories

PLC Automation → Programmable Logic Controllers PLCs → AC500 → S500 I/O modules



PRODUCT-DETAILS

TU532

I/O terminal unit. For 230 VAC and relay modules. Spring terminals (TU532)



General Information

Extended Product Type	TU532
Product ID	1SAP217000R0001
ABB Type Designation	TU532
EAN	4016779649261
Catalog Description	I/O terminal unit. For 230 VAC and relay modules. Spring terminals (TU532)
Long Description	TU532: S500 I/O terminal unit. For 230 VAC and relay modules. Spring terminals.

Ordering

Country of Origin	Germany (DE) Finland (FI)
CN8	85389091
Invoice Description	I/O terminal unit. For 230 VAC and relay modules. Spring terminals (TU532)
Made To Order	No
Minimum Order Quantity	1 piece
Order Multiple	1 piece
Selling Unit of Measure	piece

Dimensions

Product Net Weight	0.164 kg
	28 mm

Length	
Product Net Height	135 mm
Product Net Width	67.5 mm
Gross Weight	0.194 kg
Package Level 1 Depth / Length	147 mm
Package Level 1 Height	40 mm
Package Level 1 Width	78 mm
Package Level 1 Units	1 carton

Technical

Function	For 230 VAC and relay modules. Spring terminals
Number of Analog Configurable I/Os	0
Degree of Protection	IP20
Supply Voltage	24 V DC
Ambient Air Temperature	Operation 0 ... +60 °C Storage -40 ... +70 °C

Additional Information

Product Main Type	TU532
Product Name	Distributed Automation I/Os

Classifications

eClass	27-24-22-92
EPLAN Catalog Tree	Electrical engineering / PLC / General
ETIM 8	EC000810 - PLC mounting rack
UNSPSC	32151703

Environmental

WEEE B2C / B2B	Business To Business
WEEE Category	5. Small Equipment (No External Dimension More Than 50 cm)



PRODUCT-DETAILS

TU532-H

I/O terminal unit. For 230 VAC and relay modules. Spring terminals. Hot Swap (TU532-H)



General Information

Extended Product Type	TU532-H
Product ID	1SAP215100R0001
ABB Type Designation	TU532-H
EAN	4013614531729
Catalog Description	I/O terminal unit. For 230 VAC and relay modules. Spring terminals. Hot Swap (TU532-H)
Long Description	TU532-H: S500 I/O terminal unit. For 230 VAC and relay modules. Spring terminals. Hot Swap.

Ordering

Country of Origin	Germany (DE) United States (US) Finland (FI)
CN8	85389091
Invoice Description	I/O terminal unit. For 230 VAC and relay modules. Spring terminals. Hot Swap (TU532-H)
Made To Order	No
Minimum Order Quantity	1 piece
Order Multiple	1 piece
Selling Unit of Measure	piece

Dimensions

Product Net Weight	0.166 kg
Product Net Depth / Length	28 mm
Product Net Height	135 mm
Product Net Width	67.5 mm
Gross Weight	0.196 kg
Package Level 1 Depth / Length	147 mm
Package Level 1 Height	40 mm
Package Level 1 Width	78 mm
Package Level 1 Units	1 carton

Technical

Function	For 230 VAC and relay modules. Spring terminals. Hot Swap
Degree of Protection	IP20

Additional Information

Product Main Type	TU532
Product Name	Distributed Automation I/Os

Classifications

eClass	27-24-22-92
EPLAN Catalog Tree	Electrical engineering / PLC / General
ETIM 8	EC000810 - PLC mounting rack
UNSPSC	32151703

Environmental

WEEE B2C / B2B	Business To Business
WEEE Category	5. Small Equipment (No External Dimension More Than 50 cm)

PRODUCT-DETAILS

TU541

I/O terminal unit. For 24 VDC high current modules. Screw terminals (TU541)



General Information

Extended Product Type	TU541
Product ID	1SAP213000R0001
ABB Type Designation	TU541
EAN	4016779653800
Catalog Description	I/O terminal unit. For 24 VDC high current modules. Screw terminals (TU541)
Long Description	TU541: S500 I/O terminal unit. For 24 VDC high current modules. Screw terminals.

Ordering

Country of Origin	Germany (DE)
CN8	85389091
Invoice Description	I/O terminal unit. For 24 VDC high current modules. Screw terminals (TU541)
Made To Order	No
Minimum Order Quantity	1 piece
Order Multiple	1 piece
Selling Unit of Measure	piece

Dimensions

Product Net Weight	0.24 kg
Product Net Depth / Length	28 mm
Product Net Height	135 mm
Product Net Width	67.5 mm

Gross Weight	0.27 kg
Package Level 1 Depth / Length	147 mm
Package Level 1 Height	40 mm
Package Level 1 Width	78 mm
Package Level 1 Units	1 carton

Technical

Function	For 24 VDC high current modules. Screw terminals
Degree of Protection	IP20

Additional Information

Product Main Type	TU541
Product Name	TU541:S500.Terminal Unit Pos.Mod. S

Classifications

eClass	27-24-22-92
ETIM 8	EC000810 - PLC mounting rack
UNSPSC	32151703

Environmental

WEEE B2C / B2B	Business To Business
WEEE Category	5. Small Equipment (No External Dimension More Than 50 cm)

Categories

PLC Automation → Programmable Logic Controllers PLCs → AC500 → S500 I/O modules



PRODUCT-DETAILS

TU542

I/O terminal unit. For 24 VDC high current modules. Spring terminals (TU542)



General Information

Extended Product Type	TU542
Product ID	1SAP213200R0001
ABB Type Designation	TU542
EAN	4016779653817
Catalog Description	I/O terminal unit. For 24 VDC high current modules. Spring terminals (TU542)
Long Description	TU542: S500 I/O terminal unit. For 24 VDC high current modules. Spring terminals.

Ordering

Country of Origin	Germany (DE) Finland (FI)
CN8	85389091
Invoice Description	I/O terminal unit. For 24 VDC high current modules. Spring terminals (TU542)
Made To Order	No
Minimum Order Quantity	1 piece
Order Multiple	1 piece
Selling Unit of Measure	piece

Dimensions

Product Net Weight	0.163 kg
Product Net Depth / Length	28 mm
Product Net Height	135 mm

Product Net Width	67.5 mm
Gross Weight	0.193 kg
Package Level 1 Depth / Length	147 mm
Package Level 1 Height	40 mm
Package Level 1 Width	78 mm
Package Level 1 Units	1 carton

Technical

Function	For 24 VDC high current modules. Spring terminals
Number of Analog Configurable I/Os	0
Degree of Protection	IP20
Supply Voltage	24 V DC
Ambient Air Temperature	Operation 0 ... +60 °C Storage -40 ... +70 °C

Additional Information

Product Main Type	TU542
Product Name	Distributed Automation I/Os

Classifications

eClass	27-24-22-92
EPLAN Catalog Tree	Electrical engineering / PLC / General
ETIM 8	EC000810 - PLC mounting rack
UNSPSC	32151703

Environmental

WEEE B2C / B2B	Business To Business
WEEE Category	5. Small Equipment (No External Dimension More Than 50 cm)

Categories

PLC Automation → Programmable Logic Controllers PLCs → AC500 → S500 I/O modules



PRODUCT-DETAILS

TU542-H

I/O terminal unit. For 24 VDC high current modules. Spring terminals. Hot Swap (TU542-H)



General Information

Extended Product Type	TU542-H
Product ID	1SAP215200R0001
ABB Type Designation	TU542-H
EAN	4013614531736
Catalog Description	I/O terminal unit. For 24 VDC high current modules. Spring terminals. Hot Swap (TU542-H)
Long Description	TU542-H: S500 I/O terminal unit. For 24 VDC high current modules. Spring terminals. Hot Swap.

Ordering

Country of Origin	Germany (DE) United States (US) Finland (FI)
CN8	85389091
Invoice Description	I/O terminal unit. For 24 VDC high current modules. Spring terminals. Hot Swap (TU542-H)
Made To Order	No
Minimum Order Quantity	1 piece
Order Multiple	1 piece
Selling Unit of Measure	piece

Dimensions

Product Net Weight	0.164 kg 28 mm
--------------------	-------------------

Length	
Product Net Height	135 mm
Product Net Width	67.5 mm
Gross Weight	0.194 kg
Package Level 1 Depth / Length	147 mm
Package Level 1 Height	40 mm
Package Level 1 Width	78 mm
Package Level 1 Units	1 carton

Technical

Function	For 24 VDC high current modules. Spring terminals. Hot Swap
Degree of Protection	IP20

Additional Information

Product Main Type	TU542
Product Name	Distributed Automation I/Os

Classifications

eClass	27-24-22-92
EPLAN Catalog Tree	Electrical engineering / PLC / General
ETIM 8	EC000810 - PLC mounting rack
UNSPSC	32151703

Environmental

WEEE B2C / B2B	Business To Business
WEEE Category	5. Small Equipment (No External Dimension More Than 50 cm)

Categories

PLC Automation → Programmable Logic Controllers PLCs → AC500 → S500 I/O modules



PRODUCT-DETAILS

TU542-H-XC

I/O terminal unit. For 24 VDC high current modules. Spring terminals. Hot Swap (TU542-H-XC)



General Information

Extended Product Type	TU542-H-XC
Product ID	1SAP415200R0001
ABB Type Designation	TU542-H-XC
EAN	4013614531767
Catalog Description	I/O terminal unit. For 24 VDC high current modules. Spring terminals. Hot Swap (TU542-H-XC)
Long Description	TU542-H-XC: S500 I/O terminal unit. For 24 VDC high current modules. Spring terminals. Hot Swap. eXtreme Conditions

Ordering

Country of Origin	Germany (DE) United States (US) Finland (FI)
CN8	85389091
Invoice Description	I/O terminal unit. For 24 VDC high current modules. Spring terminals. Hot Swap (TU542-H-XC)
Made To Order	No
Minimum Order Quantity	1 piece
Order Multiple	1 piece
Selling Unit of Measure	piece

Dimensions

Product Net Weight	0.165 kg
Product Net Depth / Length	28 mm
Product Net Height	135 mm
Product Net Width	67.5 mm
Gross Weight	0.195 kg
Package Level 1 Depth / Length	147 mm
Package Level 1 Height	40 mm
Package Level 1 Width	78 mm
Package Level 1 Units	1 carton

Technical

Function	For 24 VDC high current modules. Spring terminals. Hot Swap
Degree of Protection	IP20

Additional Information

Product Main Type	TU542
Product Name	Distributed Automation I/Os

Classifications

EPLAN Catalog Tree	Electrical engineering / PLC / General
ETIM 8	EC000810 - PLC mounting rack
UNSPSC	32151703

Environmental

WEEE B2C / B2B	Business To Business
WEEE Category	5. Small Equipment (No External Dimension More Than 50 cm)

Categories

PLC Automation → Programmable Logic Controllers PLCs → AC500-XC → S500 I/O modules



PRODUCT-DETAILS

TU551-CS31

Interface terminal unit. For CS31 protocol.
Screw terminals (TU551-CS31)



General Information

Extended Product Type	TU551-CS31
Product ID	1SAP210600R0001
ABB Type Designation	TU551-CS31
EAN	4016779650229
Catalog Description	Interface terminal unit. For CS31 protocol. Screw terminals (TU551-CS31)
Long Description	TU551-CS31: S500 Interface terminal unit. For CS31 protocol. Screw terminals.

Ordering

Country of Origin	Germany (DE) Finland (FI)
CN8	85389091
Invoice Description	Interface terminal unit. For CS31 protocol. Screw terminals (TU551-CS31)
Made To Order	No
Minimum Order Quantity	1 piece
Order Multiple	1 piece
Selling Unit of Measure	piece

Dimensions

Product Net Weight	0.236 kg 28 mm
--------------------	-------------------

Length	
Product Net Height	135 mm
Product Net Width	67.5 mm
Gross Weight	0.266 kg
Package Level 1 Depth / Length	147 mm
Package Level 1 Height	40 mm
Package Level 1 Width	78 mm
Package Level 1 Units	1 carton

Technical

Function	For CS31 protocol. Screw terminals
Number of Analog Configurable I/Os	0
Degree of Protection	IP20
Supply Voltage	24 V DC
Ambient Air Temperature	Operation 0 ... +60 °C Storage -40 ... +70 °C

Additional Information

Product Main Type	TU551
Product Name	Distributed Automation I/Os

Classifications

eClass	27-24-22-92
EPLAN Catalog Tree	Electrical engineering / PLC / General
ETIM 8	EC000810 - PLC mounting rack
UNSPSC	32151703

Environmental

WEEE B2C / B2B	Business To Business
WEEE Category	5. Small Equipment (No External Dimension More Than 50 cm)



PRODUCT-DETAILS

TU552-CS31

Interface terminal unit. For CS31 protocol. Spring terminals (TU552-CS31)



General Information

Extended Product Type	TU552-CS31
Product ID	1SAP210400R0001
ABB Type Designation	TU552-CS31
EAN	4016779650236
Catalog Description	Interface terminal unit. For CS31 protocol. Spring terminals (TU552-CS31)
Long Description	TU552-CS31: S500 Interface terminal unit. For CS31 protocol. Spring terminals.

Ordering

Country of Origin	Germany (DE) Finland (FI)
CN8	85389091
Invoice Description	Interface terminal unit. For CS31 protocol. Spring terminals (TU552-CS31)
Made To Order	No
Minimum Order Quantity	1 piece
Order Multiple	1 piece
Selling Unit of Measure	piece

Dimensions

Product Net Weight	0.159 kg
Product Net Depth / Length	28 mm
Product Net Height	135 mm

Product Net Width	67.5 mm
Gross Weight	0.192 kg
Package Level 1 Depth / Length	147 mm
Package Level 1 Height	40 mm
Package Level 1 Width	78 mm
Package Level 1 Units	1 carton

Technical

Function	For CS31 protocol. Spring terminals
Number of Analog Configurable I/Os	0
Degree of Protection	IP20
Supply Voltage	24 V DC
Ambient Air Temperature	Operation 0 ... +60 °C Storage -40 ... +70 °C

Additional Information

Product Main Type	TU552
Product Name	Distributed Automation I/Os

Classifications

eClass	27-24-22-92
EPLAN Catalog Tree	Electrical engineering / PLC / General
ETIM 8	EC000810 - PLC mounting rack
UNSPSC	32151703

Environmental

WEEE B2C / B2B	Business To Business
WEEE Category	5. Small Equipment (No External Dimension More Than 50 cm)

Categories

PLC Automation → Programmable Logic Controllers PLCs → AC500 → Communication interface modules



PRODUCT-DETAILS

TU552-CS31-XC

Interface terminal unit. For CS31 protocol.
Spring terminals (TU552-CS31-XC)



General Information

Extended Product Type	TU552-CS31-XC
Product ID	1SAP410400R0001
ABB Type Designation	TU552-CS31-XC
EAN	4016779846400
Catalog Description	Interface terminal unit. For CS31 protocol. Spring terminals (TU552-CS31-XC)
Long Description	TU552-CS31-XC: S500 Interface terminal unit. For CS31 protocol. Spring terminals. eXtreme Conditions

Ordering

Country of Origin	Germany (DE) Finland (FI)
CN8	85389091
Invoice Description	Interface terminal unit. For CS31 protocol. Spring terminals (TU552-CS31-XC)
Made To Order	No
Minimum Order Quantity	1 piece
Order Multiple	1 piece
Selling Unit of Measure	piece

Dimensions

Product Net Weight	0.16 kg
Product Net Depth / Length	28 mm
Product Net Height	135 mm
Product Net Width	67.5 mm
Gross Weight	0.192 kg
Package Level 1 Depth / Length	147 mm
Package Level 1 Height	40 mm
Package Level 1 Width	78 mm
Package Level 1 Units	1 carton

Technical

Function	For CS31 protocol. Spring terminals
Degree of Protection	IP20
Ambient Air Temperature	Operation -30...+70 °C Storage -40...+85 °C

Additional Information

Product Main Type	TU552
Product Name	Distributed Automation I/Os

Classifications

EPLAN Catalog Tree	Electrical engineering / PLC / General
ETIM 8	EC000810 - PLC mounting rack
UNSPSC	32151703

Environmental

WEEE B2C / B2B	Business To Business
WEEE Category	5. Small Equipment (No External Dimension More Than 50 cm)

Categories

PLC Automation → Programmable Logic Controllers PLCs → AC500-XC → Communication interface modules



PRODUCT-DETAILS

TU582-S

I/O terminal unit. For safety I/O Modules.
24VDC. Spring terminals (TU582-S)



General Information

Extended Product Type	TU582-S
Product ID	1SAP281200R0001
ABB Type Designation	TU582-S
EAN	4016779681810
Catalog Description	I/O terminal unit. For safety I/O Modules. 24VDC. Spring terminals (TU582-S)
Long Description	TU582-S: S500 I/O terminal unit. For safety I/O Modules. 24VDC. Spring terminals.

Ordering

Country of Origin	Germany (DE) Finland (FI)
CN8	85389091
Invoice Description	I/O terminal unit. For safety I/O Modules. 24VDC. Spring terminals (TU582-S)
Made To Order	No
Minimum Order Quantity	1 piece
Order Multiple	1 piece
Selling Unit of Measure	piece

Dimensions

Product Net Weight	0.162 kg
--------------------	----------

Product Net Depth / Length	28 mm
Product Net Height	135 mm
Product Net Width	67.5 mm
Gross Weight	0.195 kg
Package Level 1 Depth / Length	147 mm
Package Level 1 Height	40 mm
Package Level 1 Width	78 mm
Package Level 1 Units	1 carton

Technical

Function	For safety I/O Modules. 24VDC. Spring terminals
Degree of Protection	IP20
Safety Integrity Level (SIL)	2

Additional Information

Product Main Type	TU582
Product Name	Distributed Automation I/Os

Classifications

eClass	27-24-22-92
EPLAN Catalog Tree	Electrical engineering / PLC / General
ETIM 8	EC000810 - PLC mounting rack
UNSPSC	32151703

Environmental

SCIP	de1c3b55-91ea-42ed-9f23-fe38671e6047 Germany (DE)
WEEE B2C / B2B	Business To Business
WEEE Category	5. Small Equipment (No External Dimension More Than 50 cm)



По вопросам продаж и поддержки обращайтесь:

Иркутск (395)279-98-46
Казань (843)206-01-48
Екатеринбург (343)384-55-89
Воронеж (473)204-51-73
Вологда (8172)26-41-59
Волгоград (844)278-03-48
Владимир (4922)49-43-18
Владивосток (423)249-28-31
Брянск (4832)59-03-52
Благовещенск (4162)22-76-07
Белгород (4722)40-23-64
Барнаул (3852)73-04-60
Астрахань (8512)99-46-04
Архангельск (8182)63-90-72
Омск (3955)60-70-56
Иркутск (7273)495-231

Калининград (4012)72-03-81
Калуга (4842)92-23-67
Кемерово (3842)65-04-62
Киров (8332)68-02-04
Коломна (4966)23-41-49
Кострома (4942)77-07-48
Краснодар (861)203-40-90
Красноярск (391)204-63-61
Курган (3522)50-90-47
Курск (4712)77-13-04
Липецк (4742)52-20-81
Магнитогорск (3519)55-03-13
Москва (495)268-04-70
Мурманск (8152)59-64-93
Набережные Челны (8552)20-53-41
Нижний Новгород (831)429-08-12
Новокузнецк (3843)20-46-81
Новосибирск (383)227-86-73
Ноябрьск (3496)41-32-12

Омск (3812)21-46-40
Орел (4862)44-53-42
Оренбург (3532)37-68-04
Пенза (8412)22-31-16
Пермь (342)205-81-47
Петрозаводск (8142)55-98-37
Псков (8112)59-10-37
Ростов-на-Дону (863)308-18-15
Рязань (4912)46-61-64
Самара (846)206-03-16
Санкт-Петербург (812)309-46-40
Саранск (8342)22-96-24
Саратов (845)249-38-78
Севастополь (8692)22-31-93
Симферополь (3652)67-13-56
Смоленск (4812)29-41-54
Сочи (862)225-72-31
Ставрополь (8652)20-65-13
Сургут (3462)77-98-35

Сыктывкар (8212)25-95-17
Тамбов (4752)50-40-97
Тверь (4822)63-31-35
Тольятти (8482)63-91-07
Томск (3822)98-41-53
Тула (4872)33-79-87
Тюмень (3452)66-21-18
Улан-Удэ (3012)59-97-51
Ульяновск (8422)24-23-59
Уфа (347)229-48-12
Хабаровск (4212)92-98-04
Чебоксары (8352)28-53-07
Челябинск (351)202-03-61
Череповец (8202)49-02-64
Чита (3022)38-34-83
Якутск (4112)23-90-97
Ярославль (4852)69-52-93

Россия +7(495)268-04-70

Казахстан +7(7172)727-132

Киргизия +996(312)96-26-47

<https://abbdrives.nt-rt.ru/> || aei@nt-rt.ru