

По вопросам продаж и поддержки обращайтесь:

Алматы (7273)495-231
Ангарск (3955)60-70-56
Архангельск (8182)63-90-72
Астрахань (8512)99-46-04
Барнаул (3852)73-04-60
Белгород (4722)40-23-64
Благовещенск (4162)22-76-07
Брянск (4832)59-03-52
Владивосток (423)249-28-31
Владикавказ (8672)28-90-48
Владимир (4922)49-43-18
Волгоград (844)278-03-48
Вологда (8172)26-41-59
Воронеж (473)204-51-73
Екатеринбург (343)384-55-89
Иваново (4932)77-34-06
Ижевск (3412)26-03-58
Иркутск (395)279-98-46
Казань (843)206-01-48

Калининград (4012)72-03-81
Калуга (4842)92-23-67
Кемерово (3842)65-04-62
Киров (8332)68-02-04
Коломна (4966)23-41-49
Кострома (4942)77-07-48
Краснодар (861)203-40-90
Красноярск (391)204-63-61
Курган (3522)50-90-47
Курск (4712)77-13-04
Липецк (4742)52-20-81
Магнитогорск (3519)55-03-13
Москва (495)268-04-70
Мурманск (8152)59-64-93
Набережные Челны (8552)20-53-41
Нижний Новгород (831)429-08-12
Новокузнецк (3843)20-46-81
Новосибирск (383)227-86-73
Ноябрьск(3496)41-32-12

Омск (3812)21-46-40
Орел (4862)44-53-42
Оренбург (3532)37-68-04
Пенза (8412)22-31-16
Пермь (342)205-81-47
Петрозаводск (8142)55-98-37
Псков (8112)59-10-37
Ростов-на-Дону (863)308-18-15
Рязань (4912)46-61-64
Самара (846)206-03-16
Санкт-Петербург (812)309-46-40
Саранск (8342)22-96-24
Саратов (845)249-38-78
Севастополь (8692)22-31-93
Симферополь (3652)67-13-56
Смоленск (4812)29-41-54
Сочи (862)225-72-31
Ставрополь (8652)20-65-13
Сургут (3462)77-98-35

Сыктывкар (8212)25-95-17
Тамбов (4752)50-40-97
Тверь (4822)63-31-35
Тольятти (8482)63-91-07
Томск (3822)98-41-53
Тула (4872)33-79-87
Тюмень (3452)66-21-18
Улан-Удэ (3012)59-97-51
Ульяновск (8422)24-23-59
Уфа (347)229-48-12
Хабаровск (4212)92-98-04
Чебоксары (8352)28-53-07
Челябинск (351)202-03-61
Череповец (8202)49-02-64
Чита (3022)38-34-83
Якутск (4112)23-90-97
Ярославль (4852)69-52-93

Россия +7(495)268-04-70

Казахстан +7(7172)727-132

Киргизия +996(312)96-26-47

<https://abbdrives.nt-rt.ru/> || aei@nt-rt.ru

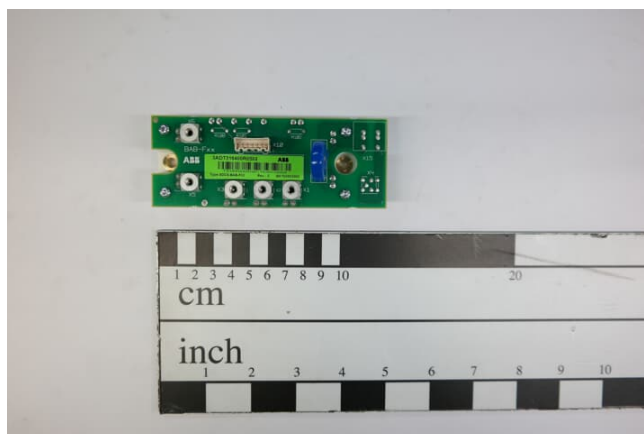
КОМПЛЕКТУЮЩИЕ ДЛЯ ПРИВОДОВ

Техническое описание

на платы для приводов

постоянного тока

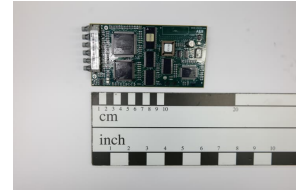
SDCS



PRODUCT-DETAILS

3ADT220090R0041

SDCS-AMC-DC-CLAS2-COAT; SDCS-AMC-DC-CLAS2-COAT CONTROLLERB



General Information

Product ID	3ADT220090R0041
ABB Type Designation	SDCS-AMC-DC-CLAS2-COAT
Catalog Description	SDCS-AMC-DC-CLAS2-COAT; SDCS-AMC-DC-CLAS2-COAT CONTROLLERB

Ordering

Core Credit	0.00
Country of Origin	Germany (DE) Finland (FI) Thailand (TH)
Customs Tariff Number	85049099
Invoice Description	SDCS-AMC-DC-CLAS2-COAT CONTROLLERB
Made To Order	No
Minimum Order Quantity	1 piece
Order Multiple	1 piece
Quote Only	No
Selling Unit of Measure	piece

Dimensions

Product Net Weight	0.31 kg
--------------------	---------

Technical

Frame Size	Spare Parts
------------	-------------

Additional Information

Product Name	SDCS-AMC-DC-CLAS2-COAT CONTROLLERB
--------------	------------------------------------

Classifications

UNSPSC	39122004
--------	----------

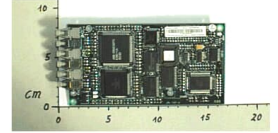
Environmental

WEEE Category	Product Not in WEEE Scope
---------------	---------------------------

3BSE017192R0001

SDCS-AMC-DC-CLAS1 F. FIELDBUS

"No longer for sale" replaced by



General Information

Product ID	3BSE017192R0001
ABB Type Designation	SDCS-AMC-DC-CLAS1
Catalog Description	SDCS-AMC-DC-CLAS1 F. FIELDBUS
Long Description	SDCS-AMC-DC-CLAS1.FLD. @@

Additional Information

ABB Type Designation	SDCS-AMC-DC-CLAS1
Country of Origin	Sweden (SE)
Customs Tariff Number	85176200
Frame Size	Spare Parts
Gross Weight	0.1 kg
Invoice Description	SDCS-AMC-DC-CLAS1 F. FIELDBUS
Made To Order	No
Medium Description	SDCS-AMC-DC-CLAS1.FLD. @@
Minimum Order Quantity	1 piece
Order Multiple	1 piece
Package Level 1 Units	0 carton
Part Type	New
Product Name	SDCS-AMC-DC-CLAS1 F. FIELDBUS
Product Net Weight	0.1 kg
Product Type	Spare Parts
Quote Only	Yes
	3ADT312700R0002

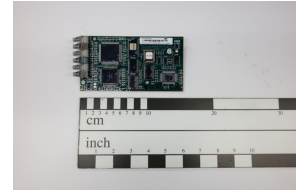
(NEW)

Selling Unit of Measure	piece
Short Description	-
Technical Information	SDCS-AMC-DC-CLAS1 F. FIELDBUSADAPT. N..A /SDCS-AMC-DC-CLAS1 THIS BOARD IS WITHOUT SOFTWARE ; MEANS WITHOUT FUNCTION
Temperature Class Default	--
Two Speed Motor	No

PRODUCT-DETAILS

3ADT220090R0040

SDCS-AMC-DC2-COAT; SDCS-AMC-DC2-COAT CONTROL UNIT



General Information

Product ID	3ADT220090R0040
ABB Type Designation	SDCS-AMC-DC2-COAT
Catalog Description	SDCS-AMC-DC2-COAT; SDCS-AMC-DC2-COAT CONTROL UNIT

Ordering

Core Credit	0.00
Country of Origin	Thailand (TH)
Customs Tariff Number	85371098
Invoice Description	SDCS-AMC-DC2-COAT CONTROL UNIT
Made To Order	No
Minimum Order Quantity	1 piece
Order Multiple	1 piece
Quote Only	No
Selling Unit of Measure	piece

Dimensions

Product Net Weight	0.1 kg
--------------------	--------

Technical

Frame Size	Spare Parts
------------	-------------

Additional Information

Product Name	SDCS-AMC-DC2-COAT CONTROL UNIT
--------------	--------------------------------

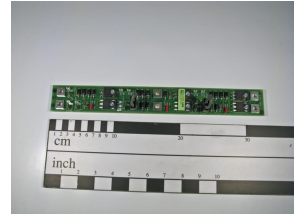
Environmental

WEEE Category	Product Not in WEEE Scope
---------------	---------------------------

3ADT311400R1501

SDCS-CMA-2; SDCS-CMA-2

CURRENT MEASUREMENT KID



General Information

Product ID	3ADT311400R1501
ABB Type Designation	SDCS-CMA-2
Catalog Description	SDCS-CMA-2; SDCS-CMA-2 CURRENT MEASUREMENT KID

Ordering

Country of Origin	Germany (DE)
Customs Tariff Number	85049099
Invoice Description	SDCS-CMA-2 CURRENT MEASUREMENT KID
Made To Order	No
Minimum Order Quantity	1 piece
Order Multiple	1 piece
Quote Only	No
Selling Unit of Measure	piece

Dimensions

Product Net Weight	0.5 kg
--------------------	--------

Technical

Frame Size	Spare_Parts
------------	-------------

Additional Information

Product Name	SDCS-CMA-2 CURRENT MEASUREMENT KID
--------------	------------------------------------

Classifications

UNSPSC	39122004
--------	----------

Environmental

WEEE Category	Product Not in WEEE Scope
---------------	---------------------------

PRODUCT-DETAILS

3ADT321200R1501

SDCS-CCB-H01; SDCS-CCB-H01 CABLE CONNECTION BOARD RoHS

General Information

Product ID	3ADT321200R1501
ABB Type Designation	SDCS-CCB-H01
Catalog Description	SDCS-CCB-H01; SDCS-CCB-H01 CABLE CONNECTION BOARD RoHS

Ordering

Country of Origin	Poland (PL)
Customs Tariff Number	85059090
Invoice Description	SDCS-CCB-H01 CABLE CONNECTION BOARD RoHS
Made To Order	No
Minimum Order Quantity	1 piece
Order Multiple	1 piece
Quote Only	No
Selling Unit of Measure	piece

Dimensions

Product Net Weight	0.3 kg
Package Level 1 Units	1 piece

Technical

Frame Size	Undefined
------------	-----------

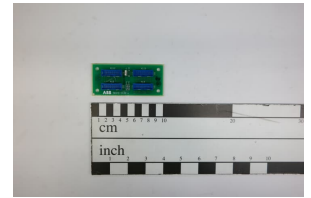
Additional Information

Product Name	SDCS-CCB-H01 CABLE CONNECTION BOARD
--------------	-------------------------------------

Environmental

WEEE Category	Product Not in WEEE Scope
---------------	---------------------------

3ADT315500R0001 SDCS- CCB-4; SDCS-CCB-4



General Information

Product ID	3ADT315500R0001
ABB Type Designation	SDCS- CCB-4
Catalog Description	SDCS-CCB-4; SDCS- CCB-4

Ordering

Country of Origin	China (CN)
Customs Tariff Number	85049099
Invoice Description	SDCS-
Made To Order	No
Minimum Order Quantity	1 piece
Order Multiple	1 piece
Quote Only	No
Selling Unit of Measure	piece

Dimensions

Product Net Weight	0.199 kg
--------------------	----------

Technical

Frame Size	Spare_Parts
------------	-------------

Additional Information

Product Name	SDCS- CCB-4
--------------	----------------

Classifications

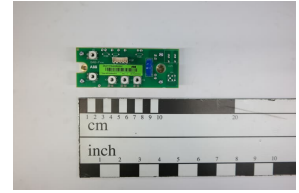
UNSPS	39122004
-------	----------

Environmental

WEEE Category	Product Not in WEEE Scope
---------------	---------------------------

3ADT316400R0502

SDCS-BAB-F02; SDCS-BAB-F02 BRIDGE ADAPTIONS BO



General Information

Product ID	3ADT316400R0502
ABB Type Designation	SDCS-BAB-F02
Catalog Description	SDCS-BAB-F02; SDCS-BAB-F02 BRIDGE ADAPTIONS BO

Ordering

Country of Origin	United States (US) China (CN)
Customs Tariff Number	85049099
Invoice Description	SDCS-BAB-F02 BRIDGE ADAPTIONS BO
Made To Order	No
Minimum Order Quantity	1 piece
Order Multiple	1 piece
Quote Only	No
Selling Unit of Measure	piece

Dimensions

Product Net Weight	28.03 kg
--------------------	----------

Technical

Frame Size	Spare_Parts
------------	-------------

Additional Information

Product Name	SDCS-BAB-F02 BRIDGE ADAPTIONS BO
--------------	----------------------------------

Classifications

UNSPSC	39122004
--------	----------

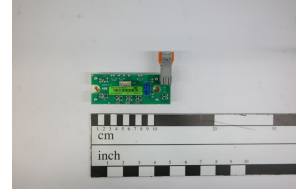
Environmental

WEEE Category	Product Not in WEEE Scope
---------------	---------------------------

PRODUCT-DETAILS

3ADT316400R0501

SDCS-BAB-F01; SDCS-BAB-F01 BRIDGE ADAPTIONS BOARD



General Information

Product ID	3ADT316400R0501
ABB Type Designation	SDCS-BAB-F01
Catalog Description	SDCS-BAB-F01; SDCS-BAB-F01 BRIDGE ADAPTIONS BOARD

Ordering

Country of Origin	United States (US) Estonia (EE) China (CN)
Customs Tariff Number	85049090
Invoice Description	SDCS-BAB-F01 BRIDGE ADAPTIONS BOARD
Made To Order	No
Minimum Order Quantity	1 piece
Order Multiple	1 piece
Quote Only	No
Selling Unit of Measure	piece

Dimensions

Product Net Weight	0.299 kg
Package Level 1 Units	1 piece

Technical

Frame Size	Spare Parts
------------	-------------

Additional Information

Product Name	SDCS-BAB-F01 BRIDGE ADAPTIONS BO
--------------	----------------------------------

Classifications

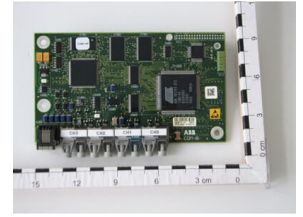
UNSPSC	39122004
--------	----------

Environmental

WEEE Category	Product Not in WEEE Scope
---------------	---------------------------

3ADT220134R0001

SDCS-COM-81 board 10MBd; SDCS-COM-81 Fast optical DDCS Communication Module 10Mbd (e.g. AC800M)



General Information

Product ID	3ADT220134R0001
ABB Type Designation	SDCS-COM-81 board 10MBd
Catalog Description	SDCS-COM-81 board 10MBd; SDCS-COM-81 Fast optical DDCS Communication Module 10Mbd (e.g. AC800M)

Ordering

Core Credit	0.00
Country of Origin	Thailand (TH) United States (US)
Customs Tariff Number	85371098
Invoice Description	SDCS-COM-81 Fast optical DDCS Communication Module 10Mbd (e.g. AC800M)
Made To Order	No
Minimum Order Quantity	1 piece
Quote Only	No
Selling Unit of Measure	piece

Dimensions

Product Net Weight	0.5 kg
Product Net Depth / Length	225 mm
Product Net Height	50 mm
Product Net Width	150 mm

Technical

Frame Size	A
------------	---

Additional Information

Product Name	Options
--------------	---------

Classifications

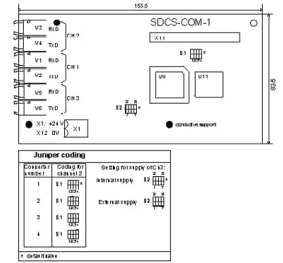
UNSPSC	39120000
--------	----------

Environmental

WEEE Category	Product Not in WEEE Scope
---------------	---------------------------

3BSE005028R0001

SDCS-COM-1; SDCS-COM1 DRIVE LINK BOARD



General Information

Product ID	3BSE005028R0001
ABB Type Designation	SDCS-COM-1
Catalog Description	SDCS-COM-1; SDCS-COM1 DRIVE LINK BOARD

Ordering

Core Credit	0.00
Country of Origin	Germany (DE) Sweden (SE)
Customs Tariff Number	85176200
Invoice Description	SDCS-COM1 DRIVE LINK BOARD
Made To Order	No
Minimum Order Quantity	1 piece
Order Multiple	1 piece
Quote Only	No
Selling Unit of Measure	piece

Dimensions

Product Net Weight	0.24 kg
--------------------	---------

Technical

Frame Size	Spare_Parts
------------	-------------

Additional Information

Product Name	SDCS-COM1 DRIVE LINK BOARD
--------------	----------------------------

Environmental

WEEE Category	Product Not in WEEE Scope
---------------	---------------------------

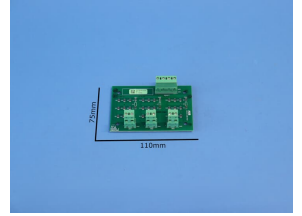
Where Used (as part of "kit")

Identifier	Description	Type
61434399	AC-COM-1 MD; COMMUNICATION BOA HKWIS	Kit

PRODUCT-DETAILS

3ADT320400R1501

SDCS-CMI-H02; SDCS-CMI-H02 CURR. MEAS. INTERF. ROHS



General Information

Product ID	3ADT320400R1501
ABB Type Designation	SDCS-CMI-H02
Catalog Description	SDCS-CMI-H02; SDCS-CMI-H02 CURR. MEAS. INTERF. ROHS

Ordering

Country of Origin	Thailand (TH) Germany (DE)
Customs Tariff Number	85049090
Invoice Description	SDCS-CMI-H02 CURR. MEAS. INTERF. ROHS
Made To Order	No
Minimum Order Quantity	1 piece
Order Multiple	1 piece
Quote Only	No
Selling Unit of Measure	piece

Dimensions

Product Net Weight	0.3 kg
Package Level 1 Units	1 piece

Technical

Frame Size	Undefined
------------	-----------

Additional Information

Product Name	SDCS-CMI-H02 CURR. MEAS. INTERF. R
--------------	------------------------------------

Classifications

UNSPSC	39122004
--------	----------

Environmental

WEEE Category	Product Not in WEEE Scope
---------------	---------------------------

PRODUCT-DETAILS

3ADT320300R1502

SDCS-CMI-H01A; SDCS-CMI-H01a CURR. MEAS. INTERF.

General Information

Product ID	3ADT320300R1502
ABB Type Designation	SDCS-CMI-H01A
Catalog Description	SDCS-CMI-H01A; SDCS-CMI-H01a CURR. MEAS. INTERF.

Ordering

Country of Origin	Thailand (TH)
Customs Tariff Number	85049099
Invoice Description	SDCS-CMI-H01a CURR. MEAS. INTERF.
Made To Order	No
Minimum Order Quantity	1 piece
Order Multiple	1 piece
Quote Only	No
Selling Unit of Measure	piece

Dimensions

Product Net Weight	0.099 kg
--------------------	----------

Technical

Frame Size	Undefined
------------	-----------

Additional Information

Product Name	SDCS-CMI-H01a CURR. MEAS. INTERF.
--------------	-----------------------------------

Classifications

UNSPSC	39122004
--------	----------

ABB SDCS-COM-82 3ADT220134R0002

Коммуникационный модуль 5 МБд

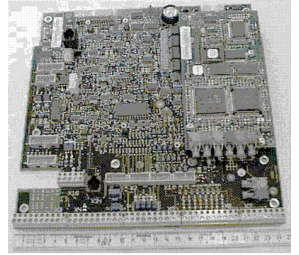


Артикул	SDCS-COM-82
Бренд	АББ
Место происхождения	Швеция
Тип продукта	Модуль связи
Номер таможенного тарифа	85389091
Размеры	30*20*20см
СЗ	1 кг
Упаковка	Оригинальная упаковка с заводской пломбой.
Статус RoHS	В соответствии с Директивой ЕС 2011/65/EU.
Качество	100% новый оригинал
Запас	В наличии
Срок поставки	1-3 дня после оплаты
Послепродажное обслуживание	Иметь
Гарантия	1 год
Условия доставки	DHL/FEDEX/EMS/UPS/TNT
минимальный заказ	1 кусок
Условия оплаты	Т/Т или Вестерн Юнион

PRODUCT-DETAILS

3ADT220072R0007

SDCS-CON2-15 + AMC-DC-CLASx-BO



General Information

Product ID	3ADT220072R0007
ABB Type Designation	SDCS-CON2-15+AMC-CLAS2
Catalog Description	SDCS-CON2-15 + AMC-DC-CLASx-BO
Long Description	SDCS-CON2-15,AMC DC CLASS

Additional Information

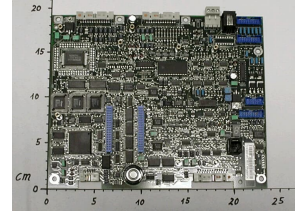
ABB Type Designation	SDCS-CON2-15+AMC-CLAS2
CN8	85423190
Core Credit	0.00
Country of Origin	Sweden (SE)
Customs Tariff Number	85423190
Frame Size	Spare_Parts
Gross Weight	0 kg
Invoice Description	SDCS-CON2-15 + AMC-DC-CLASx-BO
Made To Order	No
Medium Description	SDCS-CON2-15,AMC DC CLASS
Minimum Order Quantity	1 piece
Order Multiple	1 piece
Part Type	New
Product Name	SDCS-CON2-15 + AMC-DC-CLASx-BO
Product Net Weight	0 kg
Product Type	Spare_Parts
Quote Only	Yes

Replacement Product ID (NEW)	3ADT220072R0011
Selling Unit of Measure	piece
Short Description	-
Stocked At (Warehouses)	Wickliffe, Ohio, United States
Technical Information	SDCS-CON2-15 + AMC-DC-CLASx-BOARD /SDCS-CON2-15+AMC-CLAS2 It is recommended to use a SDC-CON2 and SDCS-AMC.. board combination as a spare part !!! avoid single board delivery (communication between the boards)
Temperature Class Default	--
Two Speed Motor	No
UNSPSC	39120000
WEEE B2C / B2B	Business To Business
WEEE Category	Product Not in WEEE Scope

PRODUCT-DETAILS

3ADT220072R0002

SDCS-CON1-52 CONTROL BOARD



General Information

Product ID	3ADT220072R0002
ABB Type Designation	SDCS-CON1-52
Catalog Description	SDCS-CON1-52 CONTROL BOARD

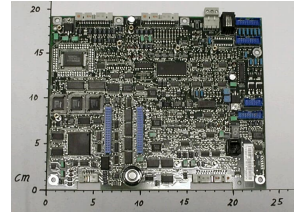
Additional Information

ABB Type Designation	SDCS-CON1-52
CN8	85389091
Core Credit	0.00
Country of Origin	Germany (DE) Sweden (SE) Saudi Arabia (SA)
Customs Tariff Number	85389091
Frame Size	Spare_Parts
Gross Weight	0.1 kg
Invoice Description	SDCS-CON1-52 CONTROL BOARD
Made To Order	No
Medium Description	SDCS-CON1-52.109
Minimum Order Quantity	1 piece
Order Multiple	1 piece
Part Type	New
Product Name	SDCS-CON1-52 CONTROL BOARD
Product Net Weight	0.1 kg
Product Type	Spare_Parts
Quote Only	No
Replaced Product ID (OLD)	3ADT220072R2 3ADT220072R52
Selling Unit of Measure	piece
Short Description	-
Stocked At (Warehouses)	Wickliffe, Ohio, United States
Technical Information	Board is no more available as standard spare part. Please check upgrade possibility with your customer. DCS800 used in connection with DCV700 please contact us
Temperature Class Default	--
Two Speed Motor	No
UNSPSC	39121000
WEEE B2C / B2B	Business To Business
WEEE Category	Product Not in WEEE Scope

PRODUCT-DETAILS

3ADT220072R0003

SDCS-CON1-21.125; SDCS-CON1-21.125 CONTROL BOARD



General Information

Product ID	3ADT220072R0003
ABB Type Designation	SDCS-CON1-21.125
Catalog Description	SDCS-CON1-21.125; SDCS-CON1-21.125 CONTROL BOARD

Ordering

Core Credit	0.00
Country of Origin	Germany (DE) Sweden (SE) Saudi Arabia (SA)
Customs Tariff Number	85049099
Invoice Description	SDCS-CON1-21.125 CONTROL BOARD
Made To Order	No
Minimum Order Quantity	1 piece
Order Multiple	1 piece
Quote Only	No
Selling Unit of Measure	piece

Dimensions

Product Net Weight	0.15 kg
--------------------	---------

Technical

Frame Size	Spare Parts
------------	-------------

Additional Information

Product Name	SDCS-CON1-21.125 CONTROL BOARD
--------------	--------------------------------

Classifications

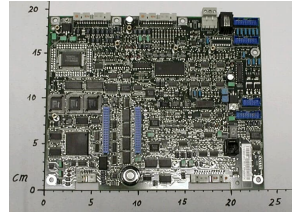
UNSPSC	39122004
--------	----------

Environmental

WEEE Category	Product Not in WEEE Scope
---------------	---------------------------

3ADT220072R0001

SDCS-CON1-11; SDCS-CON1-11 CONTROL BOARD



General Information

Product ID	3ADT220072R0001
ABB Type Designation	SDCS-CON1-11
Catalog Description	SDCS-CON1-11; SDCS-CON1-11 CONTROL BOARD

Ordering

Core Credit	0.00
Country of Origin	Germany (DE) Sweden (SE)
Customs Tariff Number	85049099
Invoice Description	SDCS-CON1-11 CONTROL BOARD
Made To Order	No
Minimum Order Quantity	1 piece
Order Multiple	1 piece
Quote Only	No
Selling Unit of Measure	piece

Dimensions

Product Net Weight	1.33 kg
--------------------	---------

Technical

Frame Size	Spare Parts
------------	-------------

Additional Information

Product Name	SDCS-CON1-11 CONTROL BOARD
--------------	----------------------------

Classifications

UNSPSC	39122004
--------	----------

Environmental

WEEE Category	Product Not in WEEE Scope
---------------	---------------------------

P3BSE006196R1

SDCS-CON-1/CNTL BD PRE-OWNED

General Information

Product ID	P3BSE006196R1
ABB Type Designation	-
Catalog Description	SDCS-CON-1/CNTL BD PRE-OWNED
Long Description	SDCS-CON-1/CNTL BD PRE-OWNED

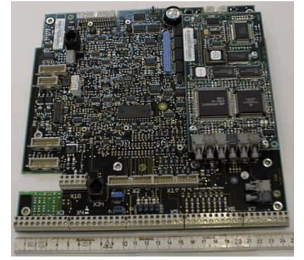
Additional Information

ABB Type Designation	-
Core Credit	0.00
Country of Origin	United States (US)
Customs Tariff Number	85352100
Frame Size	Undefined
Front End Filter	Pre-Owned
Gross Volume	0 in ³
Gross Weight	0 lb
Invoice Description	SDCS-CON-1/CNTL BD PRE-OWNED
Made To Order	No
Minimum Order Quantity	1 EA
Order Multiple	1 EA
Package Level 1 Gross Weight	0 lb
Package Level 1 Units	1 EA
Part Type	Pre-Owned
Product Name	SDCS-CON-1/CNTL BD PRE-OWNED
Product Net Weight	0 lb
Product Type	Undefined
Quote Only	No
Selling Unit of Measure	each
Stocked At (Warehouses)	Wickliffe, Ohio, United States

PRODUCT-DETAILS

3ADT220072R0009

SDCS-CON2B-15+AMC-DC-2-COAT;
SDCS-CON2B-15 + AMC-DCx-BOARD,
COAT



General Information

Product ID	3ADT220072R0009
ABB Type Designation	SDCS-CON2B-15+AMC-DC-2-COAT
Catalog Description	SDCS-CON2B-15+AMC-DC-2-COAT; SDCS-CON2B-15 + AMC-DCx-BOARD, COAT

Ordering

Core Credit	0.00
Country of Origin	Germany (DE)
Customs Tariff Number	85371098
Invoice Description	SDCS-CON2B-15 + AMC-DCx-BOARD, COAT
Made To Order	No
Minimum Order Quantity	1 piece
Order Multiple	1 piece
Quote Only	No
Selling Unit of Measure	piece

Dimensions

Product Net Weight	0.96 kg
--------------------	---------

Technical

Frame Size	Spare Parts
------------	-------------

Additional Information

Product Name	SDCS-CON2B-15 + AMC-DCx-BOARD, COAT
--------------	-------------------------------------

Classifications

UNSPSC	39120000
--------	----------

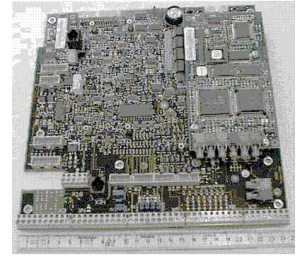
Environmental

WEEE Category	Product Not in WEEE Scope
---------------	---------------------------

PRODUCT-DETAILS

3ADT220072R0011

SDCS-CON2B-15+AMC-CLAS2-COAT;
SDCS-CON2B-15 + AMC-DC-CLAS-
BOARD,C



General Information

Product ID	3ADT220072R0011
ABB Type Designation	SDCS-CON2B-15+AMC-CLAS2-COAT
Catalog Description	SDCS-CON2B-15+AMC-CLAS2-COAT; SDCS-CON2B-15 + AMC-DC-CLAS-BOARD,C

Ordering

Country of Origin	Germany (DE) United States (US)
Customs Tariff Number	85049099
Invoice Description	SDCS-CON2B-15 + AMC-DC-CLAS-BOARD,C
Made To Order	No
Minimum Order Quantity	1 piece
Order Multiple	1 piece
Quote Only	No
Selling Unit of Measure	piece

Dimensions

Product Net Weight	1 kg
--------------------	------

Technical

Frame Size	Spare_Parts
------------	-------------

Additional Information

Product Name	SDCS-CON2B-15 + AMC-DC-CLAS-BOARD,C
--------------	-------------------------------------

Classifications

UNSPSC	39122004
--------	----------

Environmental

WEEE Category	Product Not in WEEE Scope
---------------	---------------------------

PRODUCT-DETAILS

3ADT220072R0010

SDCS-CON2A-TSU+AMC-DC2-COAT; SDCS-CON2-TSU + AMC-DC-BOARD,

General Information

Product ID	3ADT220072R0010
ABB Type Designation	SDCS-CON2A-TSU+AMC-DC2-COAT
Catalog Description	SDCS-CON2A-TSU+AMC-DC2-COAT; SDCS-CON2-TSU + AMC-DC-BOARD,

Ordering

Country of Origin	Germany (DE)
Customs Tariff Number	85044082
Invoice Description	SDCS-CON2-TSU + AMC-DC-BOARD,
Made To Order	No
Minimum Order Quantity	1 piece
Quote Only	Yes
Selling Unit of Measure	piece

Dimensions

Product Net Weight	1 kg
--------------------	------

Technical

Frame Size	Spare Parts
------------	-------------

Additional Information

Product Name	SDCS-CON2-TSU + AMC-DC-BOARD,
--------------	-------------------------------

Classifications

UNSPSC	39121007
--------	----------

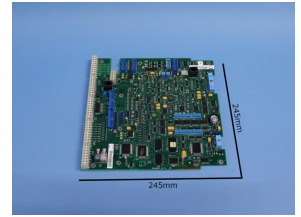
Environmental

WEEE Category	Product Not in WEEE Scope
---------------	---------------------------

PRODUCT-DETAILS

3ADT220072E0014

**SDCS-CON-2A-21; SDCS-CON-2A-21Contr.
Board/Refurbis**



General Information

Product ID	3ADT220072E0014
ABB Type Designation	SDCS-CON-2A-21
Catalog Description	SDCS-CON-2A-21; SDCS-CON-2A-21Contr. Board/Refurbis

Ordering

Country of Origin	Germany (DE)
Customs Tariff Number	85371098
Invoice Description	SDCS-CON-2A-21Contr. Board/Refurbis
Made To Order	No
Minimum Order Quantity	1 piece
Order Multiple	1 piece
Quote Only	No
Selling Unit of Measure	piece

Dimensions

Product Net Weight	1.13 kg
--------------------	---------

Technical

Frame Size	Spare_Parts
------------	-------------

Additional Information

Product Name	SDCS-CON-2A-21Contr. Board/Refurbis
--------------	-------------------------------------

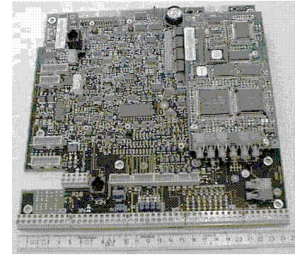
Environmental

WEEE Category	Product Not in WEEE Scope
---------------	---------------------------

3ADT220072R0022

SDCS-CON2-18 + AMC-DCx-BOARD

"No longer for sale" replaced by



General Information

Product ID	3ADT220072R0022
ABB Type Designation	SDCS-CON2A-18+AMC-DC2
Catalog Description	SDCS-CON2-18 + AMC-DCx-BOARD
Long Description	SDCS-CON2-18+AMC-DC- @@

Additional Information

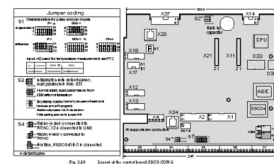
ABB Type Designation	SDCS-CON2A-18+AMC-DC2
Core Credit	0.00
Country of Origin	Germany (DE)
Customs Tariff Number	85423190
Frame Size	Spare Parts
Gross Weight	0.5 kg
Invoice Description	SDCS-CON2-18 + AMC-DCx-BOARD
Made To Order	No
Medium Description	SDCS-CON2-18+AMC-DC- @@
Minimum Order Quantity	1 piece
Order Multiple	1 piece
Package Level 1 Units	0 carton
Part Type	New
Product Name	SDCS-CON2-18 + AMC-DCx-BOARD
Product Net Weight	0.5 kg
Product Type	Spare Parts
Quote Only	Yes

Replacement Product ID (NEW)	3ADT220072R0040
Selling Unit of Measure	piece
Short Description	-
Technical Information	(communication between the boards) combination as a spare part !!! avoid single board delivery It is recommended to use a SDC-CON2 and SDCS-AMC.. board SDCS-CON2-18 + AMC-DCx-BOARD /SDCS-CON2A-18+AMC-DC2
Temperature Class Default	--
Two Speed Motor	No
UNSPSC	39120000

3ADT309600R0002

SDCS-CON-2A CONTROL BOARD WITHOUT SOFTW.

Недоступно к продаже, заменено на



Общая информация

Идентификационный номер изделия	3ADT309600R0002
Обозначение типа изделия АББ	SDCS-CON2A
Описание в каталоге	SDCS-CON-2A CONTROL BOARD WITHOUT SOFTW.
Длинное описание	3ADT220072R0012 @@

Дополнительная информация

Обозначение типа изделия АББ	SDCS-CON2A
Основной кредит	0.00
Страна происхождения	Thailand (TH)
Номер таможенного тарифа	85389091
Типоразмер	Spare_Parts
Вес брутто	0.41 kg
Описание счета-фактуры	SDCS-CON-2A CONTROL BOARD WITHOUT SOFTW.
Сделан по заказу	Нет
Описание среды	3ADT220072R0012 @@
Минимальный объем заказа	1 штука
Заказать несколько	1 штука

Тип детали	Новый
Название изделия	SDCS-CON-2A CONTROL BOARD WITHOUT S
Чистый вес изделия	0.41 kg
Тип изделия	Spare_Parts
Только квотация	Нет
Идентификационный номер замененного изделия (старый номер)	3ADT309600R0001
Идентификационный номер заменяющего изделия (новый номер)	3ADT220072R0012
Торговые единицы измерения	штука
Краткое описание	-
Техническая информация	SDCS-CON-2A CONTROL BOARD WITHOUT SOFTW. /SDCS-PIN-52 THIS BOARD IS WITHOUT SOFTWARE ; MEANS WITHOUT FUNCTION

SDCS-CON-2B 3ADT309600R0012 ABB Control Board

Detail Information

Manufacture Year:	2020	Con 6DS1311-...	SDCS-CON-2B
Application:	Nuclear Power Plant	Lead Time:	In Stock
Description:	ABB	Weight:	4lbs
High Light:	SDCS-CON-2B, ABB Control Board, 3ADT309600R0012		

Product Description

SDCS-CON-2B 3ADT309600R0012 ABB Control Board ⇒ [Click here for good](#)

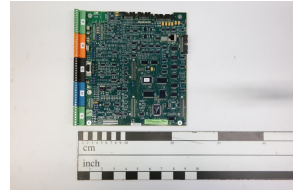
price SDCS-CON-2B

Brand/Manufacturer	ABB /SWEDEN
Part Number	SDCS-CON-2B
Alternate Part Number	SDCS-CON-2B
Description	MOTOR SERVO
Dimennsions	24.8x24.8x2cm
Weight	0.4kg

3ADT316500R1501

SDCS-CON-F01; SDCS-CON-F01

CONTROL BOARD



General Information

Product ID	3ADT316500R1501
ABB Type Designation	SDCS-CON-F01
Catalog Description	SDCS-CON-F01; SDCS-CON-F01 CONTROL BOARD

Ordering

Country of Origin	United States (US) Germany (DE) China (CN)
Customs Tariff Number	85371098
Invoice Description	SDCS-CON-F01 CONTROL BOARD
Made To Order	No
Minimum Order Quantity	1 piece
Order Multiple	1 piece
Quote Only	No
Selling Unit of Measure	piece

Dimensions

Product Net Weight	0.399 kg
--------------------	----------

Technical

Frame Size	Spare_Parts
------------	-------------

Additional Information

Product Name	SDCS-CON-F01 CONTROL BOARD
--------------	----------------------------

Environmental

WEEE Category	Product Not in WEEE Scope
---------------	---------------------------

3ADT313900R1501

SDCS-CON-4-COAT-ROHS; SDCS-CON-4 COAT-ROHS CONTROL BOARD



Общая информация

Идентификационный номер изделия	3ADT313900R1501
Обозначение типа изделия АББ	SDCS-CON-4-COAT-ROHS
Описание в каталоге	SDCS-CON-4-COAT-ROHS; SDCS-CON-4 COAT-ROHS CONTROL BOARD

Ordering

Основной кредит	0.00
Страна происхождения	China (CN) Hong Kong (HK)
Номер таможенного тарифа	85371098
Описание счета-фактуры	SDCS-CON-4 COAT-ROHS CONTROL BOARD
Сделан по заказу	Нет
Минимальный объем заказа	1 штука
Заказать несколько	1 штука
Только квотация	Нет
Торговые единицы измерения	штука

Dimensions

Чистый вес изделия	0.52 kg
Package Level 1 Units	1 штука

Technical

Типоразмер	Spare_Parts
------------	-------------

Additional Information

Название изделия	SDCS-CON-4 COAT-ROHS CONTROL BO
------------------	---------------------------------

Environmental

WEEE Category	Product Not in WEEE Scope
---------------	---------------------------

PRODUCT-DETAILS

3ADT313900R101P

SDCS-CON4-COAT CONTROL "No longer for sale" replaced by

General Information

Product ID	3ADT313900R101P
ABB Type Designation	-
Catalog Description	SDCS-CON4-COAT CONTROL

Additional Information

ABB Type Designation	-
Core Credit	0.00
Country of Origin	Thailand (TH)
Customs Tariff Number	85030099
Frame Size	Undefined
Gross Volume	0 in ³
Gross Weight	0 kg
Invoice Description	SDCS-CON4-COAT CONTROL
Made To Order	No
Medium Description	SDCS-CON4-COAT CONTROL
Minimum Order Quantity	1 EA
Order Multiple	1 EA
Package Level 1 Gross Weight	0 lb
Package Level 1 Units	1 EA
Part Type	New
Product Name	-
Product Net Weight	0 kg
Product Type	Undefined
Quote Only	No
Replacement Product ID (NEW)	3ADT313900R1501P
Selling Unit of Measure	each
Short Description	-

PRODUCT-DETAILS

3ADT313900R1001

SDCS-CON-4 COAT CONTROL

BO "No longer for sale" replaced by



General Information

Product ID	3ADT313900R1001
ABB Type Designation	SDCS-CON4-COAT
Catalog Description	SDCS-CON-4 COAT CONTROL BO
Long Description	SDCS-CON4-COAT CONTROL

Additional Information

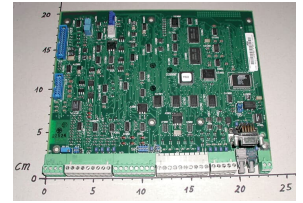
ABB Type Designation	SDCS-CON4-COAT
Core Credit	0.00
Country of Origin	China (CN)
Customs Tariff Number	85389091
Frame Size	Spare_Parts
Gross Weight	0.4 kg
Invoice Description	SDCS-CON-4 COAT CONTROL BO
Made To Order	No
Medium Description	SDCS-CON4-COAT CONTROL
Minimum Order Quantity	1 piece
Order Multiple	1 piece
Package Level 1 Units	0 carton
Part Type	New
Product Name	SDCS-CON-4 COAT CONTROL BO
Product Net Weight	0.4 kg

Product Type	Spare_Parts
Quote Only	Yes
Replacement Product ID (NEW)	3ADT313900R1501
Selling Unit of Measure	piece
Short Description	-
Technical Information	SDCS-CON-4 COAT CONTROL BOARD /SDCS-CON4-COAT
UNSPSC	39120000

PRODUCT-DETAILS

3ADT220120R0003

SDCS-CON3A-COAT; SDCS-CON3_A-COAT-CONTROL BOARD



General Information

Product ID	3ADT220120R0003
ABB Type Designation	SDCS-CON3A-COAT
Catalog Description	SDCS-CON3A-COAT; SDCS-CON3_A-COAT-CONTROL BOARD

Ordering

Core Credit	0.00
Country of Origin	Thailand (TH)
Customs Tariff Number	85371098
Invoice Description	SDCS-CON3_A-COAT-CONTROL BOARD
Made To Order	No
Minimum Order Quantity	1 piece
Order Multiple	1 piece
Quote Only	No
Selling Unit of Measure	piece

Dimensions

Product Net Weight	0.4 kg
--------------------	--------

Technical

Frame Size	Spare_Parts
------------	-------------

Additional Information

Product Name	SDCS-CON3_A-COAT-CONTROL BOARD
--------------	--------------------------------

Classifications

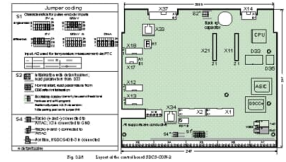
UNSPSC	39120000
--------	----------

Environmental

WEEE Category	Product Not in WEEE Scope
---------------	---------------------------

3ADT220072R0012

SDCS-CON2B-21-COAT; SDCS-CON2B-21 CONTROL BOARD, COATED



Общая информация

Идентификационный номер изделия	3ADT220072R0012
Обозначение типа изделия АББ	SDCS-CON2B-21-COAT
Описание в каталоге	SDCS-CON2B-21-COAT; SDCS-CON2B-21 CONTROL BOARD, COATED

Ordering

Основной кредит	0.00
Страна происхождения	Germany (DE)
Номер таможенного тарифа	85371098
Описание счета-фактуры	SDCS-CON2B-21 CONTROL BOARD, COATED
Сделан по заказу	Нет
Минимальный объем заказа	1 штука
Заказать несколько	1 штука
Только квотация	Нет
Торговые единицы измерения	штука

Dimensions

Чистый вес изделия	1 kg
--------------------	------

Technical

Типоразмер	Spare_Parts
------------	-------------

Additional Information

Название изделия	SDCS-CON2B-21 CONTROL BOARD, COATED
------------------	-------------------------------------

Classifications

Универсальная стандартная классификация товаров и услуг (UNSPSC)	39120000
--	----------

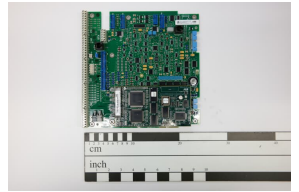
Environmental

WEEE Category	Product Not in WEEE Scope
---------------	---------------------------

PRODUCT-DETAILS

3ADT220072R0040

SDCS-CON2B-18+AMC-DC-2-COAT; SDCS-CON2B-18 + AMC-DC2-COAT- BOARD



General Information

Product ID	3ADT220072R0040
ABB Type Designation	SDCS-CON2B-18+AMC-DC-2-COAT
Catalog Description	SDCS-CON2B-18+AMC-DC-2-COAT; SDCS-CON2B-18 + AMC-DC2-COAT-BOARD

Ordering

Core Credit	0.00
Country of Origin	Germany (DE)
Customs Tariff Number	85371098
Invoice Description	SDCS-CON2B-18 + AMC-DC2-COAT-BOARD
Made To Order	No
Minimum Order Quantity	1 piece
Order Multiple	1 piece
Quote Only	No
Selling Unit of Measure	piece

Dimensions

Product Net Weight	0.67 kg
--------------------	---------

Technical

Frame Size	Spare_Parts
------------	-------------

Additional Information

Product Name	SDCS-CON2B-18 + AMC-DC2-COAT-BOARD
--------------	------------------------------------

Classifications

UNSPSC	39120000
--------	----------

Environmental

WEEE Category	Product Not in WEEE Scope
---------------	---------------------------

3ADT220072R0041

SDCS-CON2B-18+AMC-CLAS2-COAT; SDCS-CON2B-18 + AMC-DC-CLAS2-COAT-B



General Information

Product ID	3ADT220072R0041
ABB Type Designation	SDCS-CON2B-18+AMC-CLAS2-COAT
Catalog Description	SDCS-CON2B-18+AMC-CLAS2-COAT; SDCS-CON2B-18 + AMC-DC-CLAS2-COAT-B

Ordering

Country of Origin	Germany (DE) United States (US)
Customs Tariff Number	85389091
Invoice Description	SDCS-CON2B-18 + AMC-DC-CLAS2-COAT-B
Made To Order	No
Minimum Order Quantity	1 piece
Order Multiple	1 piece
Quote Only	No
Selling Unit of Measure	piece

Dimensions

Product Net Weight	0.5 kg
--------------------	--------

Technical

Frame Size	Spare Parts
------------	-------------

Additional Information

Product Name	SDCS-CON2B-18 + AMC-DC-CLAS2-COAT-B
--------------	-------------------------------------

Classifications

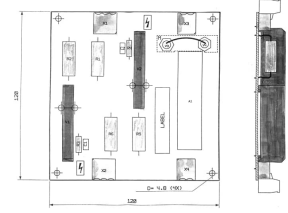
UNSPSC	39121000
--------	----------

Environmental

WEEE Category	Product Not in WEEE Scope
---------------	---------------------------

PRODUCT-DETAILS

3BSE007486R0001 SDCS-FEP-3; SDCS-FEP-3



General Information

Product ID	3BSE007486R0001
ABB Type Designation	SDCS-FEP-3
Catalog Description	SDCS-FEP-3; SDCS-FEP-3

Ordering

Core Credit	0.00
Country of Origin	Germany (DE) Sweden (SE) Thailand (TH)
Customs Tariff Number	85049099
Invoice Description	SDCS-FEP-3
Made To Order	No
Minimum Order Quantity	1 piece
Order Multiple	1 piece
Quote Only	No
Selling Unit of Measure	piece

Dimensions

Product Net Weight	0.2 kg
--------------------	--------

Technical

Frame Size	Spare Parts
------------	-------------

Additional Information

Product Name	SDCS-FEP-3
--------------	------------

Classifications

UNSPSC	39122004
--------	----------

Environmental

WEEE Category	Product Not in WEEE Scope
---------------	---------------------------

PRODUCT-DETAILS

3BSE006309R2501

SDCS-FEP-2 FIELD PROTECTION UNIT COAT.

General Information

Product ID	3BSE006309R2501
ABB Type Designation	SDCS-FEP-2
Catalog Description	SDCS-FEP-2 FIELD PROTECTION UNIT COAT.

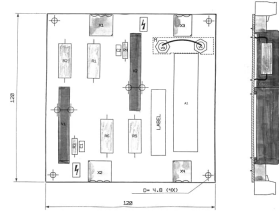
Additional Information

ABB Type Designation	SDCS-FEP-2
CN8	85049099
Country of Origin	Thailand (TH)
Customs Tariff Number	85049099
Frame Size	Undefined
Gross Weight	0.148 kg
Invoice Description	SDCS-FEP-2 FIELD PROTECTION UNIT COAT.
Made To Order	No
Minimum Order Quantity	1 piece
Order Multiple	1 piece
Package Level 1 Gross Weight	0.148 kg
Package Level 1 Units	1 piece
Part Type	New
Product Name	SDCS-FEP-2
Product Net Weight	0.148 kg
Product Type	Undefined
Quote Only	No
Replaced Product ID (OLD)	3BSE006309R2001
Selling Unit of Measure	piece
Stocked At (Warehouses)	Menden, Germany New Berlin, Wisconsin, United States Singapore, Singapore Beijing, China Singapore, Singapore Tokyo, Japan Australia, Australia
UNSPSC	39122004
WEEE B2C / B2B	Business To Business
WEEE Category	Product Not in WEEE Scope

PRODUCT-DETAILS

3BSE006309R0001

**SDCS-FEP-1 FIELD PROTECTION
UNIT "No longer for sale" replaced by**



General Information

Product ID	3BSE006309R0001
ABB Type Designation	SDCS-FEP-1
Catalog Description	SDCS-FEP-1 FIELD PROTECTION UNIT
Long Description	SDCS-FEP-1,FIELD PROTECTN

Additional Information

ABB Type Designation	SDCS-FEP-1
Core Credit	0.00
Country of Origin	Thailand (TH)
Customs Tariff Number	85049099
Frame Size	Spare_Parts
Gross Weight	0.148 kg
Invoice Description	SDCS-FEP-1 FIELD PROTECTION UNIT
Made To Order	No
Medium Description	SDCS-FEP-1,FIELD PROTECTN
Minimum Order Quantity	1 piece
Order Multiple	1 piece
Part Type	New
Product Name	SDCS-FEP-1 FIELD PROTECTION UNIT
Product Net Weight	0.148 kg
Product Type	Spare_Parts
Quote Only	No
Replacement Product ID (NEW)	3ADT220090R0021
Selling Unit of Measure	piece
Short Description	-
Temperature Class Default	--
Two Speed Motor	No
UNSPSC	39120000

PRODUCT-DETAILS

3ADT314000R1502

SDCS-DSL-4 BOARD COAT, ROHS "No longer for sale" replaced by

General Information

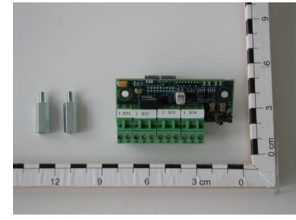
Product ID	3ADT314000R1502
ABB Type Designation	SDCS-DSL-4
Catalog Description	SDCS-DSL-4 BOARD COAT, ROHS

Additional Information

ABB Type Designation	SDCS-DSL-4
CN8	85049099
Country of Origin	Thailand (TH)
Customs Tariff Number	85049090
Frame Size	Undefined
Gross Weight	0.2 kg
Invoice Description	SDCS-DSL-4 BOARD COAT, ROHS
Made To Order	No
Minimum Order Quantity	1 piece
Order Multiple	1 piece
Package Level 1 Gross Weight	0.2 kg
Package Level 1 Units	1 piece
Part Type	New
Product Name	SDCS-DSL-4 BOARD COAT, ROHS
Product Net Weight	0.2 kg
Product Type	Undefined
Quote Only	No
Replacement Product ID (NEW)	3ADT200005R0001
Selling Unit of Measure	piece
WEEE B2C / B2B	Business To Business
WEEE Category	Product Not in WEEE Scope

3ADT200005R0001

SDCS-DSL-4; SDCS-DSL-4 Serial Communication board



Общая информация

Идентификационный номер изделия	3ADT200005R0001
Обозначение типа изделия АББ	SDCS-DSL-4
Описание в каталоге	SDCS-DSL-4; SDCS-DSL-4 Serial Communication board

Ordering

Основной кредит	0.00
Страна происхождения	Poland (PL) Germany (DE)
Номер таможенного тарифа	85176200
Описание счета-фактуры	SDCS-DSL-4 Serial Communication board
Сделан по заказу	Нет
Минимальный объем заказа	1 штука
Только квотация	Нет
Торговые единицы измерения	штука

Dimensions

Чистый вес изделия	0.2 kg
Чистая толщина изделия	1 mm
Чистая высота изделия	1 mm
Чистая ширина изделия	1 mm

Technical

Типоразмер	A
------------	---

Additional Information

Название изделия	Options
------------------	---------

Classifications

Универсальная стандартная классификация товаров и услуг (UNSPSC)	39120000
--	----------

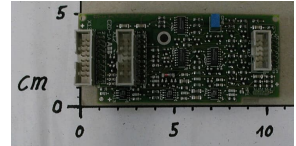
Environmental

WEEE Category	Product Not in WEEE Scope
---------------	---------------------------

PRODUCT-DETAILS

3ADT312300R0002

SDCS-CZD-1A; SDCS-CZD-1A CURRENT-ZERO-DETECTOR



General Information

Product ID	3ADT312300R0002
ABB Type Designation	SDCS-CZD-1A
Catalog Description	SDCS-CZD-1A; SDCS-CZD-1A CURRENT-ZERO-DETECTOR

Ordering

Country of Origin	Germany (DE)
Customs Tariff Number	85049099
Invoice Description	SDCS-CZD-1A CURRENT-ZERO-DETECTOR
Made To Order	No
Minimum Order Quantity	1 piece
Order Multiple	1 piece
Quote Only	No
Selling Unit of Measure	piece

Dimensions

Product Net Weight	0.1 kg
--------------------	--------

Technical

Frame Size	Spare_Parts
------------	-------------

Additional Information

Product Name	SDCS-CZD-1A CURRENT-ZERO-DETECTOR
--------------	-----------------------------------

Classifications

UNSPSC	39122004
--------	----------

Environmental

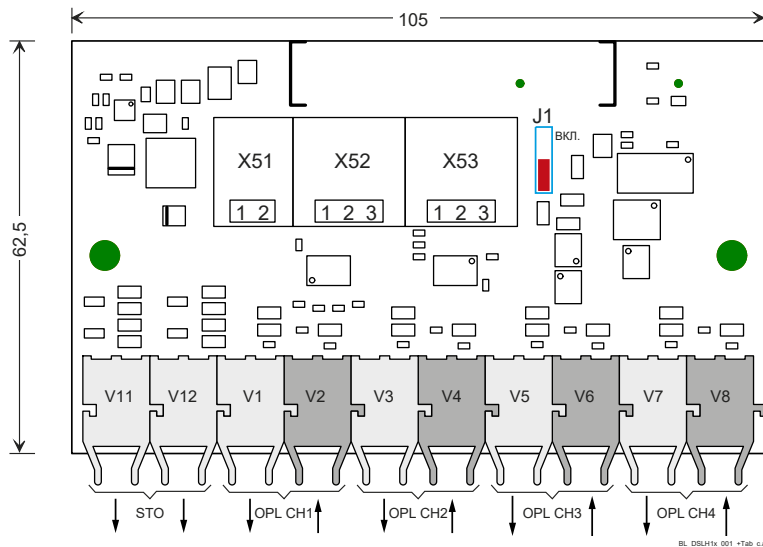
WEEE Category	Product Not in WEEE Scope
---------------	---------------------------

Плата линии связи DCSLink SDCS-CON-H1x (H1...H8)

Плата SDCS-DSL-H1x обеспечивает связь между приводами. Аппаратные средства и протокол связи реализованы на базе шины CAN.

Данный вид связи используется для обмена данными между приводами, для работы в 12-импульсном режиме и для обмена данными с возбудителями.

Оборудование связи оснащено изолированным источником питания и изолированным передатчиком. Оконечная нагрузка шины может быть включена переключателем J1.



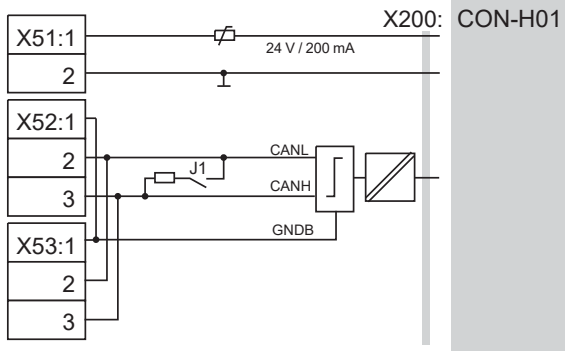
Положения переключки	
J1	Оконечная нагрузка шины
	ВЫКЛ. (по умолчанию)
	ВКЛ. = 120 Ом

BL_DSLH1x_001_+Tab_b.ai

SDCS-DSL-H1x

SDCS-DSL-H10	1 канал DCSLink, 0 силовых оптических
SDCS-DSL-H12	1 канал DCSLink, 2 силовых оптических канала
SDCS-DSL-H14	1 канал DCSLink, 4 силовых оптических канала

SDCS-DSL-H1x



SA_DSL_002_DSLH1x_b.ai

Питание	Комментарии
24 В ≤ 200 мА	Заземленный источник питания 24 В для возбудителей DCF803-0016, FEX-425-Int и DCF803-0035; предусмотрена защита от короткого замыкания.

- По X51 подается питание 24 В=.
- X52 и X53, подключенные параллельно, являются разъемами для DCSLink.

Примечания

- Общая максимальная длина кабеля DCSLink — 100 м.
- Максимальная длина кабеля из пластикового оптоволокна между SDCS-DSL-H12/H14 и SDCS-OPL-H01 — 5 м.

Питание возбуждения

Общие данные

- Токи от 6 до 520 А
- Контроль минимального тока возбуждения
- Интегрированный внешний силовой преобразователь питания возбуждения или полностью автономный распределительный шкаф
- 2-фазная или 3-фазная модель
- Полностью цифровое управление (кроме SDCS-FEX-1)

Мы рекомендуем устанавливать автотрансформатор в цепи питания силового преобразователя возбуждения для регулирования входного напряжения переменного тока до напряжения возбуждения и для уменьшения пульсаций напряжения в цепи возбуждения.

Все силовые преобразователи возбуждения (кроме SDCS-FEX-1) управляются преобразователем цепи якоря через последовательный интерфейс со скоростью передачи 62,5 кБод. Этот интерфейс служит для параметризации, управления и диагностики силового преобразователя возбуждения и, таким образом, предоставляет средство для точного управления. Кроме того, он позволяет управлять внутренним (SDCS-FEX-2A) и внешним (DCF 501B/2B/3A/4A) или двумя внешними (2 x DCF 501B/2B/3A/4A) блоками питания возбуждения. В каждом силовом преобразователе постоянного тока предоставляется соответствующая требуемая функция программного обеспечения.

Типы преобразователей возбуждения

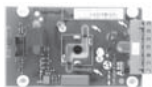
SDCS-FEX-1

- Диодный мост
- Номинальный ток 6 А
- Внутренний контроль минимального тока возбуждения, не требующий регулировки.
- Конструкция и компоненты рассчитаны на напряжение изоляции 600 В переменного тока.
- Выходное напряжение U_A :

$$U_A = U_V * \left(\frac{100 + TOL}{100} \right) * 0,9$$

TOL = допуск сетевого напряжения в % U_V =
Сетевое напряжение

- Рекомендация:
Напряжение возбуждения $\sim 0,9 * U_V$



SDCS-FEX-1

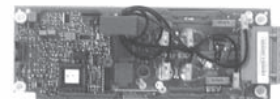
SDCS-FEX-2A

- Полурегулируемый диодно-тиристорный мост (1-Q)
- Микропроцессорное управление с помощью электронной системы, питаемой преобразователем цепи якоря.
- Конструкция и компоненты рассчитаны на напряжение изоляции 600 В переменного тока. Малоинерционное возбуждение возможно с помощью соответствующего запаса напряжения возбуждения ~~существенного времени~~
- Выходное напряжение U_A :

$$U_A = U_V * \left(\frac{100 + TOL}{100} \right) * 0,9$$

TOL = допуск сетевого напряжения в % U_V =
Сетевое напряжение

- Рекомендация:
Напряжение возбуждения $0,6...0,8 * U_V$



SDCS-FEX-2A

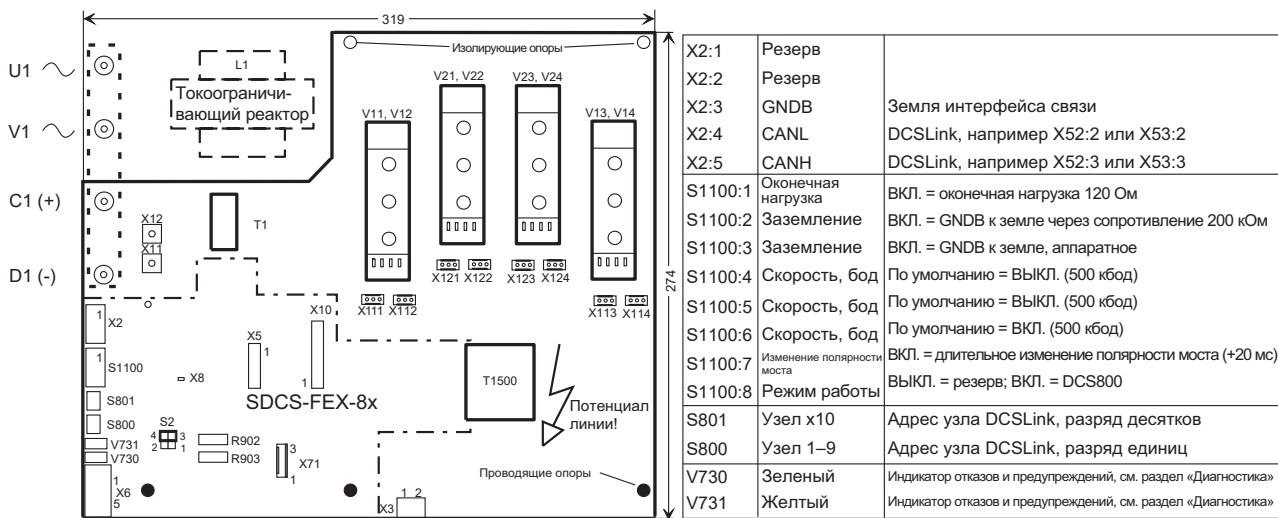
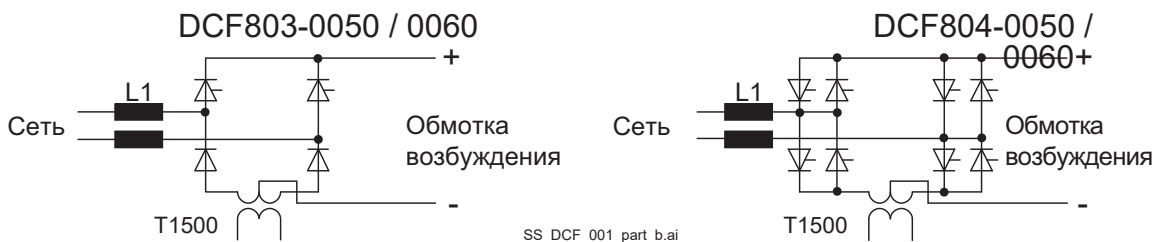
DCF803-0050, DCF804-0050, DCF803-0060 и DCF804-0060

DCF803-0050/0060 и DCF804-0050/0060 представляют собой внешние однофазные преобразователи возбуждения.

В состав **полууправляемых** (1-квadrантных) возбуждителей DCF803-0050/DCF803-0060 входят плата SDCS-FEX-82, два тиристорных/диодных силовых модуля и дополнительные компоненты (блок питания, токоограничивающий реактор L1).

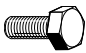
В состав **полууправляемых** (4-квadrантных) возбуждителей DCF804-0050/DCF804-0060 входят плата SDCS-FEX-81, четыре встречно-параллельных тиристорных силовых модуля и дополнительные компоненты (блок питания, токоограничивающий реактор L1).

Структура управления аналогична структуре, используемой в SDCS-FEX-4 в однофазном режиме работы. Для контроля отпирания и тока возбуждения используется микроконтроллер. Постоянный ток измеряется с помощью трансформатора переменного тока.



BL_FEX8_001_+Tab_a.ai

Сечения проводников DCF803-0050, DCF803-0060, DCF804-0050, DCF804-0060:

Клемма	Гибкий кабель		
	Макс. [мм²]	Момент затяжки [Н·м]	
X2 X3	0,25–1,5	0,5–0,6	
X:U1 X:V1 X:C1 X:D1	10	10	M6
PE	10	10	M6

3ADT314500R1001**SDCS-FEX-4 INTEGR. FIELD-EXC**

Недоступно к продаже, заменено на

Общая информация

Идентификационный номер изделия	3ADT314500R1001
Обозначение типа изделия АББ	SDCS-FEX-4
Описание в каталоге	SDCS-FEX-4 INTEGR. FIELD-EXC

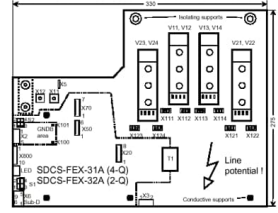
Дополнительная информация

Обозначение типа изделия АББ	SDCS-FEX-4
Страна происхождения	Thailand (TH)
Номер таможенного тарифа	85044081
Типоразмер	Spare_Parts
Вес брутто	0.66 kg
Описание счета-фактуры	SDCS-FEX-4 INTEGR. FIELD-EXC
Сделан по заказу	Нет
Минимальный объем заказа	1 штука
Package Level 1 Units	0 carton
Тип детали	Новый
Название изделия	SDCS-FEX-4 INTEGR. FIELD-EXC
Чистый вес изделия	0.66 kg
Тип изделия	Spare_Parts
Только квотация	Да
Идентификационный номер заменяющего изделия (новый номер)	3ADT209022R0001
Торговые единицы измерения	штука
Техническая информация	SDCS-FEX-4 INTEGR. FIELD-EXCITER COAT /SDCS-FEX-4 No longer available as singel spare part.
Универсальная стандартная классификация товаров и услуг (UNSPSC)	39120000

PRODUCT-DETAILS

3ADT312400R0001

SDCS-FEX-31A INTEGR. FIELD-EX



General Information

Product ID	3ADT312400R0001
ABB Type Designation	SDCS-FEX-31A
Catalog Description	SDCS-FEX-31A INTEGR. FIELD-EX
Long Description	SDCS-FEX-31A,INTEGR.

Additional Information

ABB Type Designation	SDCS-FEX-31A
CN8	85044090
Core Credit	0.00
Country of Origin	Thailand (TH)
Customs Tariff Number	85044090
Frame Size	Spare Parts
Gross Weight	0 kg
Invoice Description	SDCS-FEX-31A INTEGR. FIELD-EX
Made To Order	No
Medium Description	SDCS-FEX-31A,INTEGR.
Minimum Order Quantity	1 piece
Order Multiple	1 piece
Part Type	New
Product Name	SDCS-FEX-31A INTEGR. FIELD-EX
Product Net Weight	0 kg
Product Type	Spare Parts
Quote Only	No

Selling Unit of Measure	piece
Short Description	-
Stocked At (Warehouses)	Wickliffe, Ohio, United States
Technical Information	SDCS-FEX-31A INTEGR. FIELD-EXCITER /SDCS-FEX-31A
UNSPSC	39120000 39121007
WEEE B2C / B2B	Business To Business
WEEE Category	Product Not in WEEE Scope

3ADT312400R1002

SDCS-FEX-32B-COAT; SDCS-FEX-32B FIELD-EXCITER PCB, CO



Общая информация

Идентификационный номер изделия	3ADT312400R1002
Обозначение типа изделия АББ	SDCS-FEX-32B-COAT
Описание в каталоге	SDCS-FEX-32B-COAT; SDCS-FEX-32B FIELD-EXCITER PCB, CO

Ordering

Страна происхождения	Thailand (TH) Germany (DE)
Номер таможенного тарифа	85044082
Описание счета-фактуры	SDCS-FEX-32B FIELD-EXCITER PCB, CO
Сделан по заказу	Нет
Минимальный объем заказа	1 штука
Заказать несколько	1 штука
Только квотация	Нет
Торговые единицы измерения	штука

Dimensions

Чистый вес изделия	0.536 kg
--------------------	----------

Technical

Типоразмер	Spare_Parts
------------	-------------

Additional Information

Название изделия	SDCS-FEX-32B FIELD-EXCITER PCB, CO
------------------	------------------------------------

Classifications

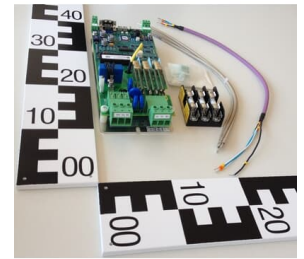
Универсальная стандартная классификация товаров и услуг (UNSPSC)	39121007
--	----------

Environmental

WEEE Category	Product Not in WEEE Scope
---------------	---------------------------

3ADT209022R0001

Field exciter SDCS-FEX-425-INT; Field exciter SDCS-FEX-425-INT 3x500V AC; 25A; built-in ; incl. 0,54m FEX-4-DSL Cable



Общая информация

Идентификационный номер изделия	3ADT209022R0001
Обозначение типа изделия АББ	Field exciter SDCS-FEX-425-INT
Описание в каталоге	Field exciter SDCS-FEX-425-INT; Field exciter SDCS-FEX-425-INT 3x500V AC; 25A; built-in ; incl. 0,54m FEX-4-DSL Cable

Ordering

Основной кредит	0.00
Страна происхождения	Poland (PL) Germany (DE)
Номер таможенного тарифа	85044082
Описание счета-фактуры	Field exciter SDCS-FEX-425-INT 3x500V AC; 25A; built-in ; incl. 0,54m FEX-4-DSL Cable
Сделан по заказу	Нет
Минимальный объем заказа	1 штука
Только квотация	Нет
Торговые единицы измерения	штука

Dimensions

Чистый вес изделия	2 kg
Чистая толщина изделия	1 mm
Чистая высота изделия	1 mm
Чистая ширина изделия	1 mm

Technical

Типоразмер	A
------------	---

Additional Information

Название изделия	Options
------------------	---------

Classifications

Универсальная стандартная классификация товаров и услуг (UNSPSC)	39120000 39121007
--	----------------------

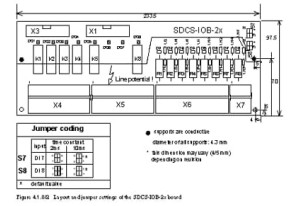
Environmental

WEEE Category	Product Not in WEEE Scope
---------------	---------------------------

PRODUCT-DETAILS

3ADT220090R0023

SDCS-IOB-23 coated; SDCS-IOB-23-coat Supply 230V AC



General Information

Product ID	3ADT220090R0023
ABB Type Designation	SDCS-IOB-23 coated
Catalog Description	SDCS-IOB-23 coated; SDCS-IOB-23-coat Supply 230V AC

Ordering

Core Credit	0.00
Country of Origin	Germany (DE) Thailand (TH)
Customs Tariff Number	85371098
Invoice Description	SDCS-IOB-23-coat Supply 230V AC
Made To Order	No
Minimum Order Quantity	1 piece
Quote Only	No
Selling Unit of Measure	piece

Dimensions

Product Net Weight	0.35 kg
Product Net Depth / Length	0 mm
Product Net Height	0 mm
Product Net Width	0 mm

Technical

Frame Size	A
------------	---

Additional Information

Product Name	Options
--------------	---------

Environmental

WEEE Category	Product Not in WEEE Scope
---------------	---------------------------

PRODUCT-DETAILS

3ADT783044R0003

SDCS-IOB-23; SDCS-IOB-23 w. 1 cable 1,7m

X1=>X1

General Information

Product ID	3ADT783044R0003
ABB Type Designation	SDCS-IOB-23
Catalog Description	SDCS-IOB-23; SDCS-IOB-23 w. 1 cable 1,7m X1=>X1

Ordering

Country of Origin	Germany (DE)
Customs Tariff Number	85371098
Invoice Description	SDCS-IOB-23 w. 1 cable 1,7m X1=>X1
Made To Order	No
Minimum Order Quantity	1 piece
Quote Only	No
Selling Unit of Measure	piece

Dimensions

Product Net Weight	0 kg
Product Net Depth / Length	150 mm
Product Net Height	150 mm
Product Net Width	150 mm

Technical

Frame Size	A
------------	---

Additional Information

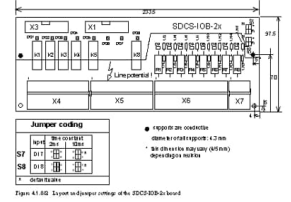
Product Name	Options
--------------	---------

Environmental

WEEE Category	Product Not in WEEE Scope
---------------	---------------------------

3ADT220090R0013

SDCS-IOB-22 coated; SDCS-IOB-22-coat Supply 115V AC



General Information

Product ID	3ADT220090R0013
ABB Type Designation	SDCS-IOB-22 coated
Catalog Description	SDCS-IOB-22 coated; SDCS-IOB-22-coat Supply 115V AC
Long Description	SDCS-IOB-22-COAT

Ordering

Core Credit	0.00
Country of Origin	Thailand (TH)
Customs Tariff Number	85371098
Invoice Description	SDCS-IOB-22-coat Supply 115V AC
Made To Order	No
Minimum Order Quantity	1 piece
Order Multiple	1 piece
Quote Only	No
Selling Unit of Measure	piece

Dimensions

Product Net Weight	0.34 kg
Product Net Depth / Length	0 mm
Product Net Height	0 mm
Product Net Width	0 mm

Technical

Frame Size	A
------------	---

Additional Information

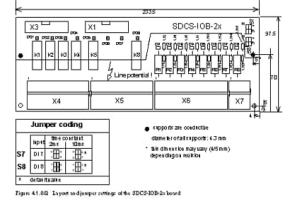
Product Name	Options
--------------	---------

Environmental

WEEE Category	Product Not in WEEE Scope
---------------	---------------------------

3BSE005177R0001

SDCS-IOB-22



General Information

Product ID	3BSE005177R0001
ABB Type Designation	SDCS-IOB-22
Catalog Description	SDCS-IOB-22

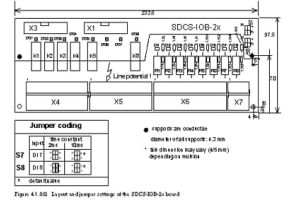
Additional Information

ABB Type Designation	SDCS-IOB-22
CN8	85049099
Country of Origin	Thailand (TH) United States (US)
Customs Tariff Number	85049099
Frame Size	Spare_Parts
Gross Weight	0.35 kg
Invoice Description	SDCS-IOB-22
Made To Order	No
Medium Description	SDCS-IOB-22,I/O CONNECT.
Minimum Order Quantity	1 piece
Order Multiple	1 piece
Part Type	New
Product Name	SDCS-IOB-22
Product Net Weight	0.35 kg
Product Type	Spare_Parts
Quote Only	No
Replacement Product ID (NEW)	3ADT220090R0013
Selling Unit of Measure	piece
Short Description	-
Stocked At (Warehouses)	Singapore, Singapore
Technical Information	DIGITAL; 115VAC
Temperature Class Default	--
Two Speed Motor	No
UNSPSC	39122004
WEEE Category	Product Not in WEEE Scope

PRODUCT-DETAILS

3ADT220090R0014

SDCS-IOB-21 coated; SDCS-IOB-21-coat Supply 24 - 48V DC



General Information

Product ID	3ADT220090R0014
ABB Type Designation	SDCS-IOB-21 coated
Catalog Description	SDCS-IOB-21 coated; SDCS-IOB-21-coat Supply 24 - 48V DC
Long Description	SDCS-IOB-21-COAT

Ordering

Core Credit	0.00
Country of Origin	Germany (DE) Sweden (SE) Thailand (TH)
Customs Tariff Number	85371098
Invoice Description	SDCS-IOB-21-coat Supply 24 - 48V DC
Made To Order	No
Minimum Order Quantity	1 piece
Order Multiple	1 piece
Quote Only	No
Selling Unit of Measure	piece

Dimensions

Product Net Weight	0.37 kg
Product Net Depth /Length	0 mm

Product Net Height	0 mm
Product Net Width	0 mm

Technical

Frame Size	A
------------	---

Additional Information

Product Name	Options
--------------	---------

Environmental

WEEE Category	Product Not in WEEE Scope
---------------	---------------------------

PRODUCT-DETAILS

3ADT783044R0001

SDCS-IOB-21; SDCS-IOB-21 w. 1 cable 1,7m

X1=>X1

General Information

Product ID	3ADT783044R0001
ABB Type Designation	SDCS-IOB-21
Catalog Description	SDCS-IOB-21; SDCS-IOB-21 w. 1 cable 1,7m X1=>X1

Ordering

Country of Origin	Germany (DE)
Customs Tariff Number	85371098
Invoice Description	SDCS-IOB-21 w. 1 cable 1,7m X1=>X1
Made To Order	No
Minimum Order Quantity	1 piece
Quote Only	No
Selling Unit of Measure	piece

Dimensions

Product Net Weight	0 kg
Product Net Depth / Length	150 mm
Product Net Height	150 mm
Product Net Width	150 mm

Technical

Frame Size	A
------------	---

Additional Information

Product Name	Options
--------------	---------

Environmental

WEEE Category	Product Not in WEEE Scope
---------------	---------------------------

PRODUCT-DETAILS

3ADT317600R0001

**SDCS-IOB4; SDCS-IOB-4 EARTH
FAULT DETECTION**

General Information

Product ID	3ADT317600R0001
ABB Type Designation	SDCS-IOB4
Catalog Description	SDCS-IOB4; SDCS-IOB-4 EARTH FAULT DETECTION

Ordering

Country of Origin	Germany (DE)
Customs Tariff Number	85371098
Invoice Description	SDCS-IOB-4 EARTH FAULT DETECTION
Made To Order	No
Minimum Order Quantity	1 piece
Order Multiple	1 piece
Quote Only	No
Selling Unit of Measure	piece

Dimensions

Product Net Weight	0.2 kg
Package Level 1 Units	1 piece

Technical

Frame Size	Undefined
------------	-----------

Additional Information

Product Name	SDCS-IOB-4 EARTH FAULT DETECTION
--------------	----------------------------------

Environmental

WEEE Category	Product Not in WEEE Scope
---------------	---------------------------

3ADT783044R0004

SDCS-IOB-3; SDCS-IOB-3 w. 2 pcs. of Cable 1,7m; X1=>X1 &X2=>X2

General Information

Product ID	3ADT783044R0004
ABB Type Designation	SDCS-IOB-3
Catalog Description	SDCS-IOB-3; SDCS-IOB-3 w. 2 pcs. of Cable 1,7m; X1=>X1 &X2=>X2

Ordering

Country of Origin	Germany (DE) United States (US)
Customs Tariff Number	85371098
Invoice Description	SDCS-IOB-3 w. 2 pcs. of Cable 1,7m; X1=>X1 &X2=>X2
Made To Order	No
Minimum Order Quantity	1 piece
Quote Only	No
Selling Unit of Measure	piece

Dimensions

Product Net Weight	1 kg
Product Net Depth / Length	150 mm
Product Net Height	150 mm
Product Net Width	150 mm

Technical

Frame Size	A
------------	---

Additional Information

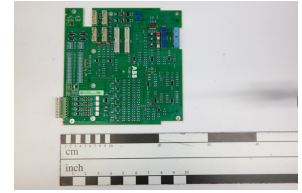
Product Name	Options
--------------	---------

Environmental

WEEE Category	Product Not in WEEE Scope
---------------	---------------------------

3ADT311300R1501

SDCS-PAR-2-COAT; SDCS-PAR-2-COAT PARALLEL CONNECTI



General Information

Product ID	3ADT311300R1501
ABB Type Designation	SDCS-PAR-2-COAT
Catalog Description	SDCS-PAR-2-COAT; SDCS-PAR-2-COAT PARALLEL CONNECTI

Ordering

Country of Origin	United States (US) Thailand (TH)
Customs Tariff Number	85049099
Invoice Description	SDCS-PAR-2-COAT PARALLEL CONNECTI
Made To Order	No
Minimum Order Quantity	1 piece
Order Multiple	1 piece
Quote Only	No
Selling Unit of Measure	piece

Dimensions

Product Net Weight	0.126 kg
--------------------	----------

Technical

Frame Size	Spare Parts
------------	-------------

Additional Information

Product Name	SDCS-PAR-2-COAT PARALLEL CONNECTI
--------------	-----------------------------------

Classifications

UNSPSC	39122004
--------	----------

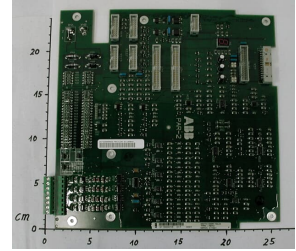
Environmental

WEEE Category	Product Not in WEEE Scope
---------------	---------------------------

PRODUCT-DETAILS

3ADT311300R0001

SDCS-PAR-2 PARALLEL CONNECTIO



General Information

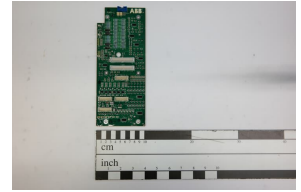
Product ID	3ADT311300R0001
ABB Type Designation	SDCS-PAR-2
Catalog Description	SDCS-PAR-2 PARALLEL CONNECTIO

Additional Information

ABB Type Designation	SDCS-PAR-2
Country of Origin	Germany (DE)
Customs Tariff Number	85389091
Frame Size	Spare_Parts
Gross Weight	0 kg
Invoice Description	SDCS-PAR-2 PARALLEL CONNECTIO
Made To Order	No
Minimum Order Quantity	1 piece
Package Level 1 Units	0 carton
Part Type	New
Product Name	SDCS-PAR-2 PARALLEL CONNECTIO
Product Net Weight	0.5 kg
Product Type	Spare_Parts
Quote Only	No
Replacement Product ID (NEW)	3ADT220090R0032
Selling Unit of Measure	piece
Stocked At (Warehouses)	Singapore, Singapore
Technical Information	SDCS-PAR-2 PARALLEL CONNECTION ELEC. /SDCS-PAR-2 In case of order you have to indicate the PROJECT Details
Temperature Class Default	--
Two Speed Motor	No
WEEE Category	Product Not in WEEE Scope

3ADT311200R1501

SDCS-PAR-1-COAT; SDCS-PAR-1-COAT PARALLEL CONNECTI



General Information

Product ID	3ADT311200R1501
ABB Type Designation	SDCS-PAR-1-COAT
Catalog Description	SDCS-PAR-1-COAT; SDCS-PAR-1-COAT PARALLEL CONNECTI

Ordering

Country of Origin	United States (US) Thailand (TH)
Customs Tariff Number	85049099
Invoice Description	SDCS-PAR-1-COAT PARALLEL CONNECTI
Made To Order	No
Minimum Order Quantity	1 piece
Order Multiple	1 piece
Quote Only	No
Selling Unit of Measure	piece

Dimensions

Product Net Weight	0.126 kg
--------------------	----------

Technical

Frame Size	Spare_Parts
------------	-------------

Additional Information

Product Name	SDCS-PAR-1-COAT PARALLEL CONNECTI
--------------	-----------------------------------

Classifications

UNSPSC	39122004
--------	----------

Environmental

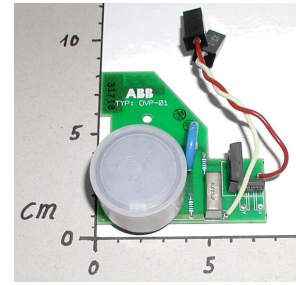
WEEE Category	Product Not in WEEE Scope
---------------	---------------------------

PRODUCT-DETAILS

3ADT313000R0002

SDCS-OVP-1B; SDCS-OVP-1B

OVERVOLTAGEPROTEC



General Information

Product ID	3ADT313000R0002
ABB Type Designation	SDCS-OVP-1B
Catalog Description	SDCS-OVP-1B; SDCS-OVP-1B OVERVOLTAGEPROTEC

Ordering

Country of Origin	Thailand (TH)
Customs Tariff Number	85049099
Invoice Description	SDCS-OVP-1B OVERVOLTAGEPROTEC
Made To Order	No
Minimum Order Quantity	1 piece
Quote Only	No
Selling Unit of Measure	piece

Dimensions

Product Net Weight	0.08 kg
--------------------	---------

Technical

Frame Size	Spare_Parts
------------	-------------

Additional Information

Product Name	SDCS-OVP-1B OVERVOLTAGEPROTEC
--------------	-------------------------------

Classifications

UNSPSC	39122004
--------	----------

Environmental

WEEE Category	Product Not in WEEE Scope
---------------	---------------------------

PRODUCT-DETAILS

3ADT200007R0101

SDCS-MEM-8 for Experts; Memory card SDCS-MEM-8 for Experts



General Information

Product ID	3ADT200007R0101
ABB Type Designation	SDCS-MEM-8 for Experts
Catalog Description	SDCS-MEM-8 for Experts; Memory card SDCS-MEM-8 for Experts

Ordering

Country of Origin	Poland (PL) Germany (DE)
Customs Tariff Number	85423269
Invoice Description	Memory card SDCS-MEM-8 for Experts
Made To Order	No
Minimum Order Quantity	1 piece
Quote Only	No
Selling Unit of Measure	piece

Dimensions

Product Net Weight	0.1 kg
Product Net Depth / Length	1 mm
Product Net Height	1 mm
Product Net Width	1 mm

Technical

Frame Size	A
------------	---

Additional Information

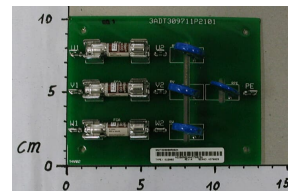
Product Name	Options
--------------	---------

Environmental

WEEE Category	Product Not in WEEE Scope
---------------	---------------------------

3ADT220090R0024

SDCS-KU2002-COAT; SDCS-KU2002-COAT VARISTORBOARD



General Information

Product ID	3ADT220090R0024
ABB Type Designation	SDCS-KU2002-COAT
Catalog Description	SDCS-KU2002-COAT; SDCS-KU2002-COAT VARISTORBOARD
Long Description	SDCS-KU2002-COATED

Ordering

Core Credit	0.00
Country of Origin	Germany (DE) Sweden (SE)
Customs Tariff Number	85049099
Invoice Description	SDCS-KU2002-COAT VARISTORBOARD
Made To Order	No
Minimum Order Quantity	1 piece
Order Multiple	1 piece
Quote Only	No
Selling Unit of Measure	piece

Dimensions

Product Net Weight	0.11 kg
--------------------	---------

Technical

Frame Size	Spare_Parts
------------	-------------

Additional Information

Product Name	SDCS-KU2002-COAT VARISTORBOARD
--------------	--------------------------------

Classifications

UNSPSC	39122004
--------	----------

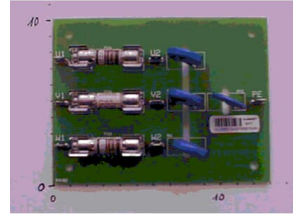
Environmental

WEEE Category	Product Not in WEEE Scope
---------------	---------------------------

PRODUCT-DETAILS

3ADT309700R0001

SDCS-KU2001 VARISTORBOARD



General Information

Product ID	3ADT309700R0001
ABB Type Designation	SDCS-KU2001
Catalog Description	SDCS-KU2001 VARISTORBOARD
Long Description	VARISTOR BOARD,INCOMER

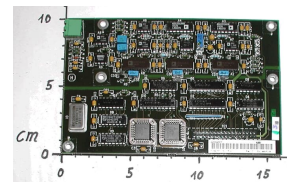
Additional Information

ABB Type Designation	SDCS-KU2001
Core Credit	0.00
Country of Origin	Germany (DE)
Customs Tariff Number	85049099
Frame Size	Spare_Parts
Gross Weight	0.12 kg
Invoice Description	SDCS-KU2001 VARISTORBOARD
Made To Order	No
Medium Description	VARISTOR BOARD,INCOMER
Minimum Order Quantity	1 piece
Order Multiple	1 piece
Package Level 1 Units	0 carton
Part Type	New
Product Name	SDCS-KU2001 VARISTORBOARD
Product Net Weight	0.12 kg

Product Type	Spare_Parts
Quote Only	No
Replacement Product ID (NEW)	3ADT220090R0011
Selling Unit of Measure	piece
Short Description	-
Stocked At (Warehouses)	Singapore, Singapore
Technical Information	SDCS-KU2001 VARISTORBOARD /SDCS-KU2001
Temperature Class Default	--
Two Speed Motor	No
WEEE Category	Product Not in WEEE Scope

3ADT220090R0007

SDCS-IOE2-COAT; SDCS-IOE-2-COAT COUNTER BAORD



Общая информация

Идентификационный номер изделия	3ADT220090R0007
Обозначение типа изделия АББ	SDCS-IOE2-COAT
Описание в каталоге	SDCS-IOE2-COAT; SDCS-IOE-2-COAT COUNTER BAORD
Длинное описание	SDCS-IOE-2-COATED

Ordering

Основной кредит	0.00
Страна происхождения	Finland (FI) Germany (DE)
Номер таможенного тарифа	85049099
Описание счета-фактуры	SDCS-IOE-2-COAT COUNTER BAORD
Сделан по заказу	Нет
Минимальный объем заказа	1 штука
Заказать несколько	1 штука
Только квотация	Нет
Торговые единицы измерения	штука

Dimensions

Чистый вес изделия	0.15 kg
--------------------	---------

Technical

Типоразмер	Spare_Parts
------------	-------------

Additional Information

Название изделия	SDCS-IOE-2-COAT COUNTER BAORD
------------------	-------------------------------

Classifications

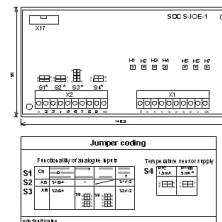
Универсальная стандартная классификация товаров и услуг (UNSPSC)	39122004
--	----------

Environmental

WEEE Category	Product Not in WEEE Scope
---------------	---------------------------

3ADT220090R0025

SDCS-IOE-1-COAT; SDCS-IOE-1-coat



General Information

Product ID	3ADT220090R0025
ABB Type Designation	SDCS-IOE-1-COAT
Catalog Description	SDCS-IOE-1-COAT; SDCS-IOE-1-coat
Long Description	SDCS-IOE-1-COATED

Ordering

Core Credit	0.00
Country of Origin	Thailand (TH)
Customs Tariff Number	85049099
Invoice Description	SDCS-IOE-1-coat
Made To Order	No
Minimum Order Quantity	1 piece
Order Multiple	1 piece
Quote Only	No
Selling Unit of Measure	piece

Dimensions

Product Net Weight	0.15 kg
--------------------	---------

Technical

Frame Size	Spare_Parts
------------	-------------

Additional Information

Product Name	SDCS-IOE-1-coat
--------------	-----------------

Classifications

UNSPSC	39120000
--------	----------

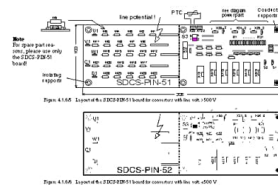
Environmental

WEEE Category	Product Not in WEEE Scope
---------------	---------------------------

3BSE004940R0001

SDCS-PIN 51 MEASUREMENT CARD

Недоступно к продаже, заменено на



Общая

Информация

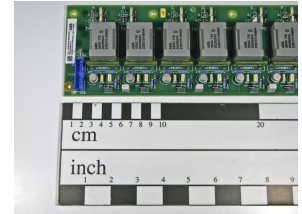
Идентификационный номер изделия	3BSE004940R0001
Обозначение типа изделия АББ	SDCS-PIN-51
Описание в каталоге	SDCS-PIN 51 MEASUREMENT CARD
Длинное описание	SDCS-PIN-51,POWER INTERF.

Дополнительная

Обозначение типа изделия АББ	SDCS-PIN-51
Основной кредит	0.00
Страна происхождения	Thailand (TH)
Номер таможенного тарифа	85049099
Типоразмер	Spare_Parts
Вес брутто	0.164 kg
Описание счета-фактуры	SDCS-PIN 51 MEASUREMENT CARD
Сделан по заказу	Нет
Описание среды	SDCS-PIN-51,POWER INTERF. 1 штука
заказа	
Заказать несколько	1 штука
Тип детали	Новый
Название изделия	SDCS-PIN 51 MEASUREMENT CARD
Чистый вес изделия	0.164 kg
Тип изделия	Spare_Parts
Только квотация	Нет
Идентификационный номер замененного изделия (старый номер)	3BSE011316R0001
Идентификационный номер заменяющего изделия (новый номер)	3ADT220090R0006
Торговые единицы измерения	штука
Краткое описание	-
Техническая информация	SDCS-PIN 51 MEASUREMENT CARD /SDCS-PIN-52 SUITABLE REPLACEMENT FOR PIN52
Температурный класс по умолчанию	--
Двухскоростной электродвигатель	Нет
Универсальная стандартная классификация товаров и услуг (UNSPSC)	39120000

3BSE004939R1512

DCS-PIN-48-SD; SDCS-PIN48-SD PULSE TRANSFORMER BOARD



General Information

Product ID	3BSE004939R1512
ABB Type Designation	DCS-PIN-48-SD
Catalog Description	DCS-PIN-48-SD; SDCS-PIN48-SD PULSE TRANSFORMER BOARD

Ordering

Country of Origin	United States (US) Germany (DE) Thailand (TH)
Customs Tariff Number	85049099
Invoice Description	SDCS-PIN48-SD PULSE TRANSFORMER BOARD
Made To Order	No
Minimum Order Quantity	1 piece
Order Multiple	1 piece
Quote Only	No
Selling Unit of Measure	piece

Dimensions

Product Net Weight	0.328 kg
Package Level 1 Units	1 piece

Technical

Frame Size	Undefined
------------	-----------

Additional Information

Product Name	SDCS-PIN48-SD
--------------	---------------

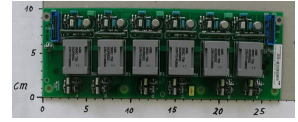
Classifications

UNSPSC	39122004
--------	----------

Environmental

WEEE Category	Product Not in WEEE Scope
---------------	---------------------------

PRODUCT-DETAILS



3BSE004939R1003

SDCS-PIN-46-COAT; SDCS-PIN 46 COAT PULSE TRANSFORMER BOARD

General Information

Product ID	3BSE004939R1003
ABB Type Designation	SDCS-PIN-46-COAT
Catalog Description	SDCS-PIN-46-COAT; SDCS-PIN 46 COAT PULSE TRANSFORMER BOARD

Ordering

Core Credit	0.00
Country of Origin	Thailand (TH)
Customs Tariff Number	85049099
Invoice Description	SDCS-PIN 46 COAT PULSE TRANSFORMER BOARD
Made To Order	No
Minimum Order Quantity	1 piece
Order Multiple	1 piece
Quote Only	No
Selling Unit of Measure	piece

Dimensions

Product Net Weight	0.399 kg
Package Level 1 Units	1 piece

Technical

Frame Size	Spare_Parts
------------	-------------

Additional Information

Product Name	SDCS-PIN 46
--------------	-------------

Classifications

UNSPSC	39122004
--------	----------

Environmental

WEEE Category	Product Not in WEEE Scope
---------------	---------------------------

PRODUCT-DETAILS

3ADT220090R0042

SDCS-PIN-12-COAT; SDCS-PIN-12-COAT CONTROLBOARD

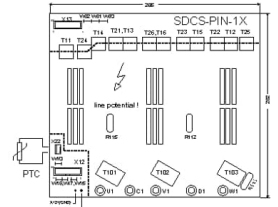


Figure 41.05 SDCS-PIN-1X board

Board Size	1500T	1500T1
Current Protection (A)	1500T	1500T1
Max. rated current (A)	500	500
Rated current (A)	25	25
IPK	IPK	IPK
IP15	IP15	IP15
IP18	IP18	IP18
IP20	IP20	IP20
IP25	IP25	IP25
IP30	IP30	IP30
IP35	IP35	IP35
IP40	IP40	IP40
IP45	IP45	IP45
IP50	IP50	IP50
IP55	IP55	IP55
IP60	IP60	IP60
IP65	IP65	IP65
IP70	IP70	IP70
IP75	IP75	IP75
IP80	IP80	IP80
IP85	IP85	IP85
IP90	IP90	IP90
IP95	IP95	IP95
IP100	IP100	IP100

Table 41.01 Summary of SDCS-PIN-1X boards

SDCS boards are supplied with the ABB
 - Should used as a spare part
 - Detail: All part of that are in a condition
 - ensure the correct connector type related entry

General Information

Product ID	3ADT220090R0042
ABB Type Designation	SDCS-PIN-12-COAT
Catalog Description	SDCS-PIN-12-COAT; SDCS-PIN-12-COAT CONTROLBOARD

Ordering

Country of Origin	Sweden (SE) Germany (DE)
Customs Tariff Number	85049099
Invoice Description	SDCS-PIN-12-COAT CONTROLBOARD
Made To Order	No
Minimum Order Quantity	1 piece
Order Multiple	1 piece
Quote Only	No
Selling Unit of Measure	piece

Dimensions

Product Net Weight	0.6 kg
--------------------	--------

Technical

Frame Size	Spare Parts
------------	-------------

Additional Information

Product Name	SDCS-PIN-12-COAT CONTROLBOARD
--------------	-------------------------------

Classifications

UNSPSC	39122004
--------	----------

Environmental

WEEE Category	Product Not in WEEE Scope
---------------	---------------------------

PRODUCT-DETAILS

3ADT220090R0027

SDCS-PIN-11-COAT; SDCS-PIN-11-COAT POWER INTERFACE B

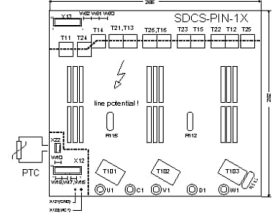


Figure 41.34: Layout of the SDCS-PIN-1X board.

Board type	YBM11	YBM13	YBM15
Control transformer ratio	1/100/1	1/100/1	1/100/1
Max. rated voltage (kV)	500	500	500
Rated current (A)	20	50	10
SDCS-PIN-1X (kV)	0-12	0-12	0-12
MFY	0-12	0-12	0-12
MFV	0-12	0-12	0-12
MFB	0-12	0-12	0-12
MFC	0-12	0-12	0-12
MFE	0-12	0-12	0-12
MFF	0-12	0-12	0-12
MFG	0-12	0-12	0-12
MFH	0-12	0-12	0-12
MFI	0-12	0-12	0-12
MFL	0-12	0-12	0-12

Table 41.34: Ratings of the SDCS-PIN-1X board. The SDCS-PIN-1X board is a 11 kV board. The ratings are given for the board in its standard configuration. The ratings are given for the board in its standard configuration. The ratings are given for the board in its standard configuration.

Board used as a spare part:
 - If the board is used as a spare part, the ratings are given in the condition of the board.
 - If the board is used as a spare part, the ratings are given in the condition of the board.
 - If the board is used as a spare part, the ratings are given in the condition of the board.

General Information

Product ID	3ADT220090R0027
ABB Type Designation	SDCS-PIN-11-COAT
Catalog Description	SDCS-PIN-11-COAT; SDCS-PIN-11-COAT POWER INTERFACE B

Ordering

Core Credit	0.00
Country of Origin	Germany (DE) Thailand (TH)
Customs Tariff Number	85049099
Invoice Description	SDCS-PIN-11-COAT POWER INTERFACE B
Made To Order	No
Minimum Order Quantity	1 piece
Order Multiple	1 piece
Quote Only	No
Selling Unit of Measure	piece

Dimensions

Product Net Weight	0.77 kg
--------------------	---------

Technical

Frame Size	Spare_Parts
------------	-------------

Additional Information

Product Name	SDCS-PIN-11-COAT POWER INTERFACE B
--------------	------------------------------------

Classifications

UNSPSC	39122004
--------	----------

Environmental

WEEE Category	Product Not in WEEE Scope
---------------	---------------------------

3ADT780007R0001

SDCS-PIN-5X-1190; SDCS-PIN-5x-1190

MEASUREMENT CARD

General Information

Product ID	3ADT780007R0001
ABB Type Designation	SDCS-PIN-5X-1190
Catalog Description	SDCS-PIN-5X-1190; SDCS-PIN-5x-1190 MEASUREMENT CARD

Ordering

Country of Origin	Thailand (TH)
Customs Tariff Number	85389091
Invoice Description	SDCS-PIN-5x-1190 MEASUREMENT CARD
Made To Order	No
Minimum Order Quantity	1 piece
Order Multiple	1 piece
Quote Only	No
Selling Unit of Measure	piece

Dimensions

Product Net Weight	0.5 kg
--------------------	--------

Technical

Frame Size	Spare_Parts
------------	-------------

Additional Information

Product Name	SDCS-PIN-5x-1190 MEASUREMENT CARD
--------------	-----------------------------------

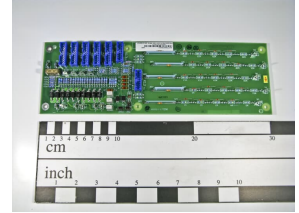
Classifications

UNSPSC	39121000
--------	----------

PRODUCT-DETAILS

3ADT780007R0010

SDCS-PIN-5X-120V; SDCS-PIN-51-120V MEASUREMENT CARD



General Information

Product ID	3ADT780007R0010
ABB Type Designation	SDCS-PIN-5X-120V
Catalog Description	SDCS-PIN-5X-120V; SDCS-PIN-51-120V MEASUREMENT CARD

Ordering

Country of Origin	China (CN)
Customs Tariff Number	85049099
Invoice Description	SDCS-PIN-51-120V MEASUREMENT CARD
Made To Order	No
Minimum Order Quantity	1 piece
Order Multiple	1 piece
Quote Only	No
Selling Unit of Measure	piece

Dimensions

Product Net Weight	0.4 kg
--------------------	--------

Technical

Frame Size	Spare Parts
------------	-------------

Additional Information

Product Name	SDCS-PIN-51-120V MEASUREMENT CARD
--------------	-----------------------------------

Classifications

UNSPSC	39122004
--------	----------

Environmental

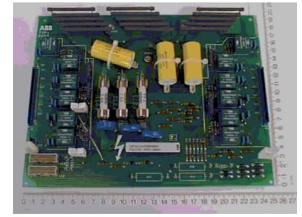
WEEE Category	Product Not in WEEE Scope
---------------	---------------------------

PRODUCT-DETAILS

GNT0164200R0004

PG6330; SDCS-PG6330 AC500V

POWER-INTERFACE-



General Information

Product ID	GNT0164200R0004
ABB Type Designation	PG6330
Catalog Description	PG6330; SDCS-PG6330 AC500V POWER-INTERFACE-

Ordering

Core Credit	0.00
Country of Origin	Germany (DE)
Customs Tariff Number	85049091
Invoice Description	SDCS-PG6330 AC500V POWER-INTERFACE-
Made To Order	No
Minimum Order Quantity	1 piece
Order Multiple	1 piece
Quote Only	No
Selling Unit of Measure	piece

Dimensions

Product Net Weight	0.7 kg
--------------------	--------

Technical

Frame Size	Spare_Parts
------------	-------------

Additional Information

Product Name	SDCS-PG6330 AC500V POWER-INTERFACE-
--------------	-------------------------------------

Classifications

UNSPSC	39120000
--------	----------

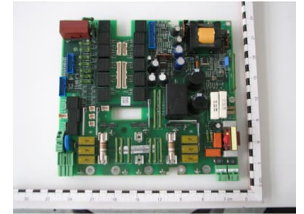
Environmental

WEEE Category	Product Not in WEEE Scope
---------------	---------------------------

PRODUCT-DETAILS

3ADT314100R1001

SDCS-PIN-4-COAT POWER INTERFACE BOARD



Общая информация

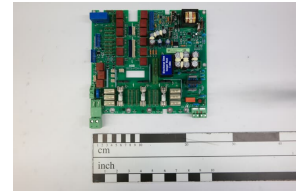
Идентификационный номер изделия	3ADT314100R1001
Обозначение типа изделия АББ	SDCS-PIN-4-COAT
Описание в каталоге	SDCS-PIN-4-COAT POWER INTERFACE BOARD
Длинное описание	SDCS-PIN4-COAT POWER

Дополнительная информация

Обозначение типа изделия АББ	SDCS-PIN-4-COAT
Основной кредит	0.00
Страна происхождения	China (CN) Thailand (TH)
Номер таможенного тарифа	85049099
Типоразмер	Spare_Parts
Вес брутто	0.8 kg
Описание счета-фактуры	SDCS-PIN-4-COAT POWER INTERFACE BOARD
Сделан по заказу	Нет
Описание среды	SDCS-PIN4-COAT POWER
Минимальный объем заказа	1 штука
Заказать несколько	1 штука
Package Level 1 Units	0 carton
Тип детали	Новый
Название изделия	SDCS-PIN-4-COAT POWER INTERFACE
Чистый вес изделия	0.8 kg
Тип изделия	Spare_Parts
Только квотация	Нет
Идентификационный номер заменяющего изделия (новый номер)	3ADT316300R1510
Торговые единицы измерения	штука
Краткое описание	-
Универсальная стандартная классификация товаров и услуг (UNSPSC)	39120000

3ADT316300R1510

SDCS-PIN-4B; SDCS-PIN-4b POWER INTERFACE BOARD



Общая информация

Идентификационный номер изделия	3ADT316300R1510
Обозначение типа изделия АББ	SDCS-PIN-4B
Описание в каталоге	SDCS-PIN-4B; SDCS-PIN-4b POWER INTERFACE BOARD

Ordering

Страна происхождения	Thailand (TH)
Номер таможенного тарифа	85049099
Описание счета-фактуры	SDCS-PIN-4b POWER INTERFACE BOARD
Сделан по заказу	Нет
Минимальный объем заказа	1 штука
Заказать несколько	1 штука
Только квотация	Нет
Торговые единицы измерения	штука

Dimensions

Чистый вес изделия	0.699 kg
--------------------	----------

Technical

Типоразмер	Spare_Parts
------------	-------------

Additional Information

Название изделия	SDCS-PIN-4b POWER INTERFACE BOARD
------------------	-----------------------------------

Classifications

Универсальная стандартная классификация товаров и услуг (UNSPSC)	39122004
--	----------

Environmental

WEEE Category	Product Not in WEEE Scope
---------------	---------------------------

Плата трансформатора отпирающих импульсов SDCS-PIN-H41 (H6...H8)

Связь с силовой частью модулей преобразователей типоразмеров H6...H8 (900–5200 A) обеспечивается одной или двумя платами трансформатора отпирающих импульсов SDCS-PIN-H41.

Преобразователи с одиночным мостом (2-квадрантные) оснащаются одной платой. Преобразователи с 2 встречно-параллельными мостами (4-квадрантные) оснащаются двумя платами.

Местоположение платы SDCS-PIN-H41

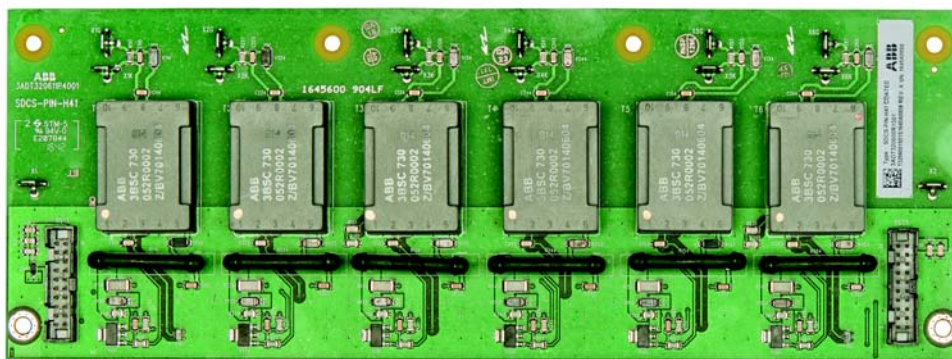
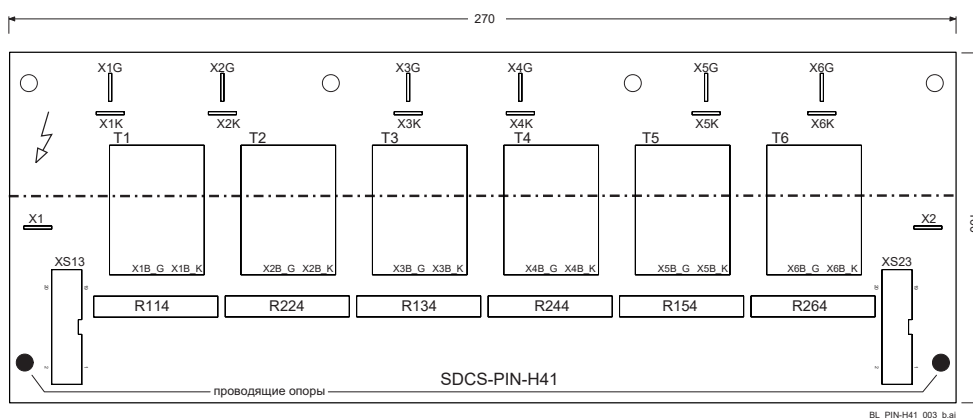
Типоразмер H6:

— плата расположена внутри модуля преобразователя.

Модули типоразмеров H7 и H8 состоят из блока управления и силового блока:

— плата расположена внутри силового блока.

Компоновка SDCS-PIN-H41



Измерительная плата SDCS-PIN-H51 (H6...H8)

Измерительная плата оснащена входами для измерения тока посредством трансформаторов тока и измерения напряжения в высокоомных цепях, а также входом для датчика температуры.

Предусмотрены следующие разъемы:

1. Четыре аналогичных канала для измерения тока на силовой стороне посредством трансформаторов тока, подключенных к X231/X232, X241/X242, X251/X252 и X261/X262.
Переменный ток выпрямляется диодами на измерительной плате.
Нагрузочный резистор автоматически масштабируется, для чего в микропрограммном обеспечении выбирается коэффициент 1:2500 или 1:4000 для трансформаторов тока.
2. Напряжение переменного тока и напряжение на двигателе измеряются на четырех входах различного типа.
20...100 В~: Измерение напряжения на X15. Для этого необходимо удалить резисторы нулевого сопротивления R221...R225, что позволит получить входы с сопротивлением 1,2 МОм.
100...525 В~: Измерение напряжения на XU2, XV2, XW2, XC2 и XD2 (сопротивление относительно земли около 1 МОм).
526...1000 В~: Измерение напряжения на XU1, XV1, XW1, XC1 и XD1 (сопротивление относительно земли около 2 МОм).
100...1200 В~: Измерение напряжения с гальванической развязкой на X15. Для этого необходимо использовать преобразователь постоянного тока A92 и трансформатор T90. Разъем X15 поддерживает входы, имеющие сопротивление 27,4 кОм.
3. X22 используется для подключения датчика температуры NTC в DCS880.
4. Разъем XC12 предназначен для подключения SDCS-CON-H01 (типоразмер H6) или SDCS-OPL-H01 (типоразмер H7, H8).

Настройка SDCS-PIN-H51 для преобразователей типоразмеров H6...H8

Кодирование токов

Типоразмер	H6				H7				H8					
Коэффициент трансформации трансформатора тока	2500:1				2500:1				4000:1					
Номинальный ток [A=] ①	900	1200	1500	2000	1900	2050	2500	3000	2050	2600	3300	4000	4800	5200
R101...R116	18 Ом													
R118	68 Ом													
R119	120 Ом													
R120	249 Ом													
R121	560 Ом													
Удаление резисторов не требуется. Автоматическое кодирование токов путем выбора кода типа в микропрограммном обеспечении.														

① Номинальный ток указан на паспортной табличке преобразователя.

Кодирование напряжений

Напряжения для различных кодов типов (DD)	04 с +S185 05 с +S185	04 (400 В) 05 (525 В)	06 (600 В) 07 (690 В) 08 (800 В) 10 (990 В)	04 (400 В) 05 (525 В) 06 (600 В) 07 (690 В) 08 (800 В) 10 (990 В) 12 (1200 В)
Напряжение сети	20 ...100 В~	100 ...525 В~	526 ...1000 В~	100 ...1200 В~
Используемые разъемы	X15 со снятыми резисторами нулевого сопротивления R221...R225 (отключение)	XU2 XV2 XW2 XC2 XD2	XU1 XV1 XW1 XC1 XD1	X15 с преобразователем пост. тока A92 и трансформатором T90
Настройка параметров 95.28 Задать: масшт. напряжения перем. тока привода	120 В	0 В	0 В	0 В

Переключатели

Оставьте переключатель J1 в положении «Разъединено» (используется по умолчанию).

Местоположение платы SDCS-CON-H01

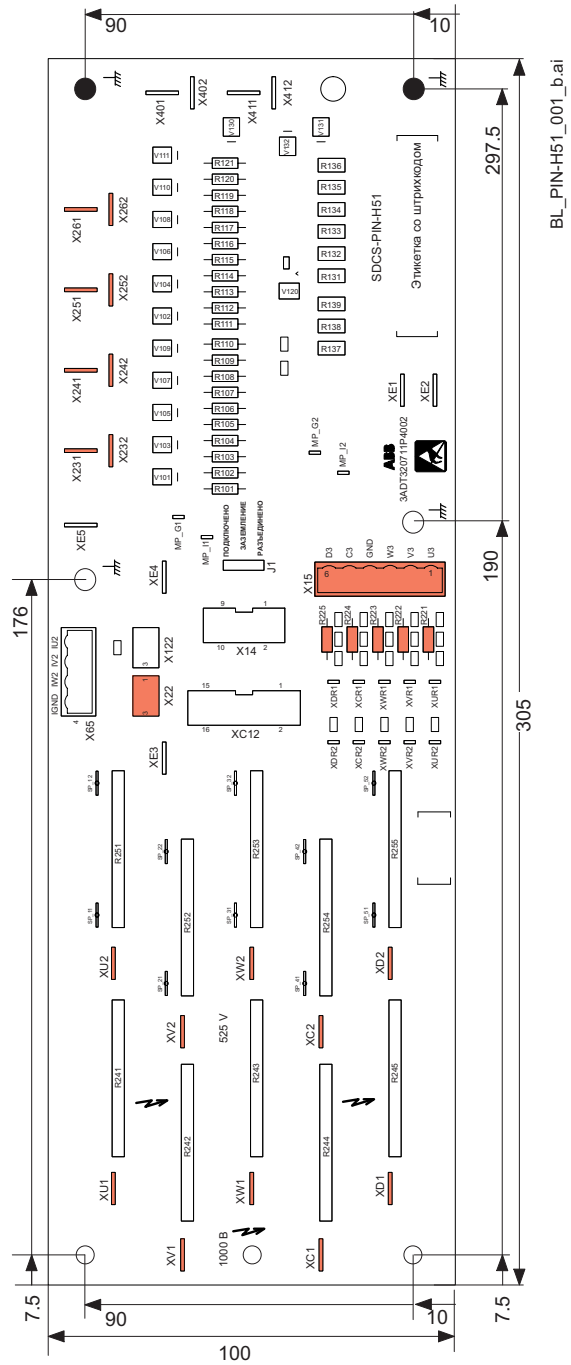
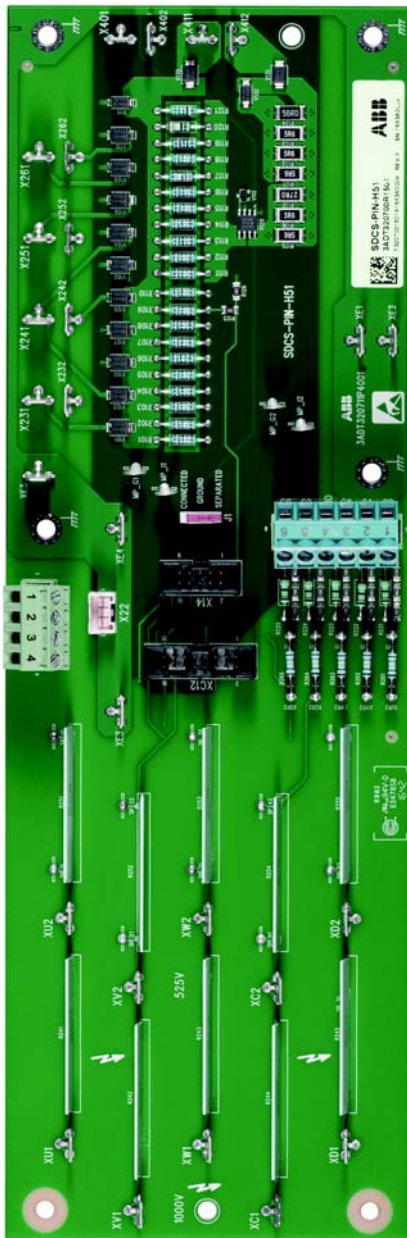
Типоразмер Н6:

— плата расположена внутри модуля.

Модули типоразмеров Н7 и Н8 состоят из блока управления и силового блока:

— плата расположена внутри силового блока.

Компоновка SDCS-PIN-H51



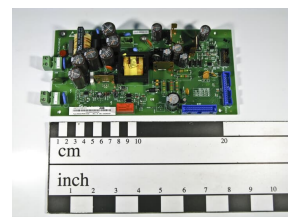
BL_PIN-H51_001_b.ai

PRODUCT-DETAILS

3ADT315100R1012

SDCS-POW-4-SD; SDCS-POW-4-SD

POWER SUPPLY



General Information

Product ID	3ADT315100R1012
ABB Type Designation	SDCS-POW-4-SD
Catalog Description	SDCS-POW-4-SD; SDCS-POW-4-SD POWER SUPPLY

Ordering

Country of Origin	China (CN)
Customs Tariff Number	85049099
Invoice Description	SDCS-POW-4-SD POWER SUPPLY
Made To Order	No
Minimum Order Quantity	1 piece
Order Multiple	1 piece
Quote Only	No
Selling Unit of Measure	piece

Dimensions

Product Net Weight	0.408 kg
--------------------	----------

Technical

Frame Size	Spare_Parts
------------	-------------

Additional Information

Product Name	SDCS-POW-4-SD POWER SUPPLY
--------------	----------------------------

Classifications

UNSPSC	39122004
--------	----------

Environmental

WEEE Category	Product Not in WEEE Scope
---------------	---------------------------

PRODUCT-DETAILS

3ADT315100R1001

SDCS-POW-4-COAT; SDCS-POW-4-COAT POWER SUPPLY

"No longer for sale" replaced by



General Information

Product ID	3ADT315100R1001
ABB Type Designation	SDCS-POW-4-COAT
Catalog Description	SDCS-POW-4-COAT; SDCS-POW-4-COAT POWER SUPPLY
Long Description	SDCS-POW 4 POWER SUPPLY

Ordering

Core Credit	0.00
Country of Origin	China (CN) Germany (DE)
Customs Tariff Number	85049099
Invoice Description	SDCS-POW-4-COAT POWER SUPPLY
Made To Order	No
Minimum Order Quantity	1 piece
Order Multiple	1 piece
Quote Only	No
Selling Unit of Measure	piece

Dimensions

Product Net Weight	0.48 kg
Package Level 1 Units	0 carton

Technical

Frame Size	Spare_Parts
------------	-------------

Additional Information

Product Name	SDCS-POW-4-COAT POWER SUPPLY
--------------	------------------------------

PRODUCT-DETAILS

3ADT319200R1501

SDCS-PIN-H11A; SDCS-PIN-H11A POWER INTERFACE BOAR

General Information

Product ID	3ADT319200R1501
ABB Type Designation	SDCS-PIN-H11A
Catalog Description	SDCS-PIN-H11A; SDCS-PIN-H11A POWER INTERFACE BOAR

Ordering

Country of Origin	Germany (DE) Thailand (TH)
Customs Tariff Number	85049099
Invoice Description	SDCS-PIN-H11A POWER INTERFACE BOAR
Made To Order	No
Minimum Order Quantity	1 piece
Order Multiple	1 piece
Quote Only	No
Selling Unit of Measure	piece

Dimensions

Product Net Weight	0.699 kg
--------------------	----------

Technical

Frame Size	Spare_Parts
------------	-------------

Additional Information

Product Name	SDCS-PIN-H11A POWER INTERFACE BOAR
--------------	------------------------------------

Classifications

UNSPSC	39122004
--------	----------

PRODUCT-DETAILS

3ADT318800R1501

SDCS-PIN-H01; SDCS-PIN-H01

POWER INTERFACE BOARD

General Information

Product ID	3ADT318800R1501
ABB Type Designation	SDCS-PIN-H01
Catalog Description	SDCS-PIN-H01; SDCS-PIN-H01 POWER INTERFACE BOARD

Ordering

Country of Origin	United States (US) Thailand (TH) China (CN)
Customs Tariff Number	85049099
Invoice Description	SDCS-PIN-H01 POWER INTERFACE BOARD
Made To Order	No
Minimum Order Quantity	1 piece
Order Multiple	1 piece
Quote Only	No
Selling Unit of Measure	piece

Dimensions

Product Net Weight	0.699 kg
--------------------	----------

Technical

Frame Size	Undefined
------------	-----------

Additional Information

Product Name	SDCS-PIN-H01 POWER INTERFACE BOARD
--------------	------------------------------------

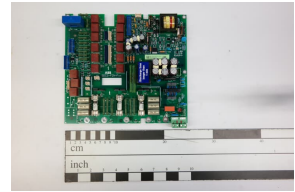
Classifications

UNSPSC	39122004
--------	----------

PRODUCT-DETAILS

3ADT316300R1502

SDCS-PIN-F01A; SDCS-PIN-F01a POWER INTERFACE BOAR



General Information

Product ID	3ADT316300R1502
ABB Type Designation	SDCS-PIN-F01A
Catalog Description	SDCS-PIN-F01A; SDCS-PIN-F01a POWER INTERFACE BOAR

Ordering

Country of Origin	United States (US) China (CN)
Customs Tariff Number	85049099
Invoice Description	SDCS-PIN-F01a POWER INTERFACE BOAR
Made To Order	No
Minimum Order Quantity	1 piece
Order Multiple	1 piece
Quote Only	No
Selling Unit of Measure	piece

Dimensions

Product Net Weight	0.699 kg
--------------------	----------

Technical

Frame Size	Spare_Parts
------------	-------------

Additional Information

Product Name	SDCS-PIN-F01a POWER INTERFACE BOAR
--------------	------------------------------------

Classifications

UNSPSC	39122004
--------	----------

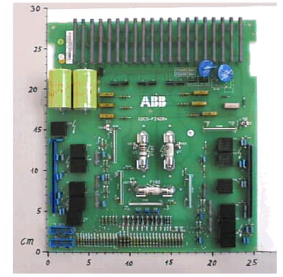
Environmental

WEEE Category	Product Not in WEEE Scope
---------------	---------------------------

PRODUCT-DETAILS

3ADT220090R0038

SDCS-PIN-206B-COAT; SDCS-PIN-206B-COAT CONTROL BOARD



General Information

Product ID	3ADT220090R0038
ABB Type Designation	SDCS-PIN-206B-COAT
Catalog Description	SDCS-PIN-206B-COAT; SDCS-PIN-206B-COAT CONTROL BOARD

Ordering

Core Credit	0.00
Country of Origin	Germany (DE) Thailand (TH)
Customs Tariff Number	85049090
Invoice Description	SDCS-PIN-206B-COAT CONTROL BOARD
Made To Order	No
Minimum Order Quantity	1 piece
Order Multiple	1 piece
Quote Only	No
Selling Unit of Measure	piece

Dimensions

Product Net Weight	0.666 kg
Package Level 1 Units	1 piece

Technical

Frame Size	Spare_Parts
------------	-------------

Additional Information

Product Name	SDCS-PIN-206B-COAT CONTROL BOARD
--------------	----------------------------------

Classifications

UNSPSC	39120000
--------	----------

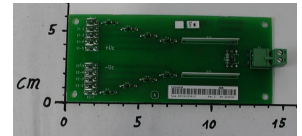
Environmental

WEEE Category	Product Not in WEEE Scope
---------------	---------------------------

PRODUCT-DETAILS

3ADT220090R0008

SDCS-UCM-1-COAT; SDCS-UCM-1-COAT EXTENSION BOA



General Information

Product ID	3ADT220090R0008
ABB Type Designation	SDCS-UCM-1-COAT
Catalog Description	SDCS-UCM-1-COAT; SDCS-UCM-1-COAT EXTENSION BOA
Long Description	SDCS-UCM-1-COATED EXTSN

Ordering

Core Credit	0.00
Country of Origin	Finland (FI)
Customs Tariff Number	85049099
Invoice Description	SDCS-UCM-1-COAT EXTENSION BOA
Made To Order	No
Minimum Order Quantity	1 piece
Order Multiple	1 piece
Quote Only	No
Selling Unit of Measure	piece

Dimensions

Product Net Weight	0.1 kg
--------------------	--------

Technical

Frame Size	Spare_Parts
------------	-------------

Additional Information

Product Name	SDCS-UCM-1-COAT EXTENSION BOA
--------------	-------------------------------

Classifications

UNSPSC	39122004
--------	----------

Environmental

WEEE Category	Product Not in WEEE Scope
---------------	---------------------------

PRODUCT-DETAILS

3ADT319400R1501

SDCS-REB-H11; SDCS-REB-H11 ADAPTER BOARD COAT.

General Information

Product ID	3ADT319400R1501
ABB Type Designation	SDCS-REB-H11
Catalog Description	SDCS-REB-H11; SDCS-REB-H11 ADAPTER BOARD COAT.

Ordering

Country of Origin	Thailand (TH)
Customs Tariff Number	85371098
Invoice Description	SDCS-REB-H11 ADAPTER BOARD COAT.
Made To Order	No
Minimum Order Quantity	1 piece
Order Multiple	1 piece
Quote Only	No
Selling Unit of Measure	piece

Dimensions

Product Net Weight	0.099 kg
--------------------	----------

Technical

Frame Size	Undefined
------------	-----------

Additional Information

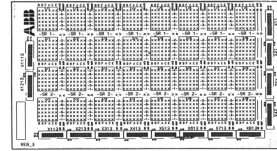
Product Name	SDCS-REB-H11 ADAPTER BOARD COAT.
--------------	----------------------------------

Environmental

WEEE Category	Product Not in WEEE Scope
---------------	---------------------------

3ADT309300R0001

SDCS-REB-3; SDCS-REB 3 PULSE DISTRIBUTIO



General Information

Product ID	3ADT309300R0001
ABB Type Designation	SDCS-REB-3
Catalog Description	SDCS-REB-3; SDCS-REB 3 PULSE DISTRIBUTIO
Long Description	SDCS-REB-3,PULSE INTERFAC

Ordering

Core Credit	0.00
Country of Origin	Germany (DE)
Customs Tariff Number	85049099
Invoice Description	SDCS-REB 3 PULSE DISTRIBUTIO
Made To Order	No
Minimum Order Quantity	1 piece
Order Multiple	1 piece
Quote Only	No
Selling Unit of Measure	piece

Dimensions

Product Net Weight	0.22 kg
--------------------	---------

Technical

Frame Size	Spare_Parts
------------	-------------

Additional Information

Product Name	SDCS-REB 3 PULSE DISTRIBUTIO
--------------	------------------------------

Classifications

UNSPSC	39122004
--------	----------

Environmental

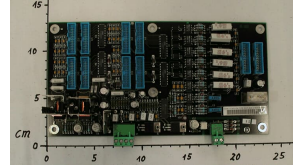
WEEE Category	Product Not in WEEE Scope
---------------	---------------------------

PRODUCT-DETAILS

DCF1192115R0001

SDCS-REB-2; SDCS-REB-2 INTERFACE CARD

"No longer for sale" replaced by



General Information

Product ID	DCF1192115R0001
ABB Type Designation	SDCS-REB-2
Catalog Description	SDCS-REB-2; SDCS-REB-2 INTERFACE CARD

Ordering

Core Credit	0.00
Country of Origin	Finland (FI)
Customs Tariff Number	85049099
Invoice Description	SDCS-REB-2 INTERFACE CARD
Made To Order	No
Minimum Order Quantity	1 piece
Order Multiple	1 piece
Quote Only	No
Selling Unit of Measure	piece

Dimensions

Product Net Weight	0.268 kg
--------------------	----------

Technical

Frame Size	Spare_Parts
------------	-------------

Additional Information

Product Name	SDCS-REB-2 INTERFACE CARD
--------------	---------------------------

Classifications

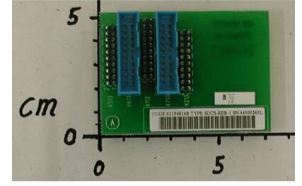
UNSPSC	39122004
--------	----------

Environmental

WEEE Category	Product Not in WEEE Scope
---------------	---------------------------

DCF1154914R0001

SDCS-REB-1; SDCS-REB-1 INTERFACE CARD



General Information

Product ID	DCF1154914R0001
ABB Type Designation	SDCS-REB-1
Catalog Description	SDCS-REB-1; SDCS-REB-1 INTERFACE CARD
Long Description	SDCS-REB-1,PULSE INTERFAC

Ordering

Core Credit	0.00
Country of Origin	Finland (FI) Germany (DE) China (CN)
Customs Tariff Number	85049099
Invoice Description	SDCS-REB-1 INTERFACE CARD
Made To Order	No
Minimum Order Quantity	1 piece
Order Multiple	1 piece
Quote Only	No
Selling Unit of Measure	piece

Dimensions

Product Net Weight	0.02 kg
--------------------	---------

Technical

Frame Size	Spare_Parts
------------	-------------

Additional Information

Product Name	SDCS-REB-1 INTERFACE CARD
--------------	---------------------------

Classifications

UNSPSC	39122004
--------	----------

Environmental

WEEE Category	Product Not in WEEE Scope
---------------	---------------------------

По вопросам продаж и поддержки обращайтесь:

Алматы (7273)495-231
Ангарск (3955)60-70-56
Архангельск (8182)63-90-72
Астрахань (8512)99-46-04
Барнаул (3852)73-04-60
Белгород (4722)40-23-64
Благовещенск (4162)22-76-07
Брянск (4832)59-03-52
Владивосток (423)249-28-31
Владикавказ (8672)28-90-48
Владимир (4922)49-43-18
Волгоград (844)278-03-48
Вологда (8172)26-41-59
Воронеж (473)204-51-73
Екатеринбург (343)384-55-89
Иваново (4932)77-34-06
Ижевск (3412)26-03-58
Иркутск (395)279-98-46
Казань (843)206-01-48

Калининград (4012)72-03-81
Калуга (4842)92-23-67
Кемерово (3842)65-04-62
Киров (8332)68-02-04
Коломна (4966)23-41-49
Кострома (4942)77-07-48
Краснодар (861)203-40-90
Красноярск (391)204-63-61
Курган (3522)50-90-47
Курск (4712)77-13-04
Липецк (4742)52-20-81
Магнитогорск (3519)55-03-13
Москва (495)268-04-70
Мурманск (8152)59-64-93
Набережные Челны (8552)20-53-41
Нижний Новгород (831)429-08-12
Новокузнецк (3843)20-46-81
Новосибирск (383)227-86-73
Ноябрьск(3496)41-32-12

Омск (3812)21-46-40
Орел (4862)44-53-42
Оренбург (3532)37-68-04
Пенза (8412)22-31-16
Пермь (342)205-81-47
Петрозаводск (8142)55-98-37
Псков (8112)59-10-37
Ростов-на-Дону (863)308-18-15
Рязань (4912)46-61-64
Самара (846)206-03-16
Санкт-Петербург (812)309-46-40
Саранск (8342)22-96-24
Саратов (845)249-38-78
Севастополь (8692)22-31-93
Симферополь (3652)67-13-56
Смоленск (4812)29-41-54
Сочи (862)225-72-31
Ставрополь (8652)20-65-13
Сургут (3462)77-98-35

Сыктывкар (8212)25-95-17
Тамбов (4752)50-40-97
Тверь (4822)63-31-35
Тольятти (8482)63-91-07
Томск (3822)98-41-53
Тула (4872)33-79-87
Тюмень (3452)66-21-18
Улан-Удэ (3012)59-97-51
Ульяновск (8422)24-23-59
Уфа (347)229-48-12
Хабаровск (4212)92-98-04
Чебоксары (8352)28-53-07
Челябинск (351)202-03-61
Череповец (8202)49-02-64
Чита (3022)38-34-83
Якутск (4112)23-90-97
Ярославль (4852)69-52-93

Россия +7(495)268-04-70

Казахстан +7(7172)727-132

Киргизия +996(312)96-26-47

<https://abbdrives.nt-rt.ru/> || aei@nt-rt.ru