

По вопросам продаж и поддержки обращайтесь:

Самары (7273)495-231
Ангарск (3955)60-70-56
Архангельск (8182)63-90-72
Астрахань (8512)99-46-04
Барнаул (3852)73-04-60
Белгород (4722)40-23-64
Благовещенск (4162)22-76-07
Брянск (4832)59-03-52
Владивосток (423)249-28-31
Владикавказ (8672)28-90-48
Владимир (4922)49-43-18
Волгоград (844)278-03-48
Вологда (8172)26-41-59
Воронеж (473)204-51-73
Екатеринбург (343)384-55-89
Иваново (4932)77-34-06
Ижевск (3412)26-03-58
Иркутск (395)279-98-46
Казань (843)206-01-48

Калининград (4012)72-03-81
Калуга (4842)92-23-67
Кемерово (3842)65-04-62
Киров (8332)68-02-04
Коломна (4966)23-41-49
Кострома (4942)77-07-48
Краснодар (861)203-40-90
Красноярск (391)204-63-61
Курган (3522)50-90-47
Курск (4712)77-13-04
Липецк (4742)52-20-81
Магнитогорск (3519)55-03-13
Москва (495)268-04-70
Мурманск (8152)59-64-93
Набережные Челны (8552)20-53-41
Нижний Новгород (831)429-08-12
Новокузнецк (3843)20-46-81
Новосибирск (383)227-86-73
Ноябрьск (3496)41-32-12

Омск (3812)21-46-40
Орел (4862)44-53-42
Оренбург (3532)37-68-04
Пенза (8412)22-31-16
Пермь (342)205-81-47
Петрозаводск (8142)55-98-37
Псков (8112)59-10-37
Ростов-на-Дону (863)308-18-15
Рязань (4912)46-61-64
Самара (846)206-03-16
Санкт-Петербург (812)309-46-40
Саранск (8342)22-96-24
Саратов (845)249-38-78
Севастополь (8692)22-31-93
Симферополь (3652)67-13-56
Смоленск (4812)29-41-54
Сочи (862)225-72-31
Ставрополь (8652)20-65-13
Сургут (3462)77-98-35

Сыктывкар (8212)25-95-17
Тамбов (4752)50-40-97
Тверь (4822)63-31-35
Тольятти (8482)63-91-07
Томск (3822)98-41-53
Тула (4872)33-79-87
Тюмень (3452)66-21-18
Улан-Удэ (3012)59-97-51
Ульяновск (8422)24-23-59
Уфа (347)229-48-12
Хабаровск (4212)92-98-04
Чебоксары (8352)28-53-07
Челябинск (351)202-03-61
Череповец (8202)49-02-64
Чита (3022)38-34-83
Якутск (4112)23-90-97
Ярославль (4852)69-52-93

Россия +7(495)268-04-70

Казахстан +7(7172)727-132

Киргизия +996(312)96-26-47

<https://abbdrives.nt-rt.ru/> || aei@nt-rt.ru

ПАНЕЛИ ОПЕРАТОРА

Техническое описание на сенсорные панели

CP



PRODUCT-DETAILS

CP665-WEB

CP665-WEB Control Panel 13.3" with microbrowser for V2.3 webserver



General Information

Extended Product Type	CP665-WEB
Product ID	1SAP565200R0001
ABB Type Designation	CP665-WEB
EAN	4013614493164
Catalog Description	CP665-WEB Control Panel 13.3" with microbrowser for V2.3 webserver
Long Description	CP665-WEB Control Panel 13.3" TFT touch screen, 64 K colors, 1280 x 800 pixel, microbrowser for V2.3 webserver

Ordering

Country of Origin	Italy (IT) Germany (DE)
CN8	85371091
Invoice Description	CP665-WEB Control Panel 13.3" with microbrowser for V2.3 webserver
Made To Order	No
Minimum Order Quantity	1 piece
Order Multiple	1 piece
Selling Unit of Measure	piece

Dimensions

Product Net Weight	2.34 kg
--------------------	---------

Product Net Depth / Length	60 mm
Product Net Height	267 mm
Product Net Width	336 mm
Gross Weight	3.4 kg
Package Level 1 Depth / Length	420 mm
Package Level 1 Height	140 mm
Package Level 1 Width	340 mm
Package Level 1 Units	1 carton

Technical

Screen Size	16:9 wide screen 13.3 in
Screen Color	64k colors
Screen Resolution	1280 x 800 pixel
Communication Interface	2x Ethernet 10/100Mbit 1x RS-232/-422/-485 2x USB 2.0 Host 1x SD-card slot 2x Expansion slot
Memory Size User Data	256 MB
Memory Size User Program	256 MB
Memory Type User Data	Flash Disk
Security	Password protection with 8 user levels
Degree of Protection	acc. to IEC 60529 Front IP66 acc. to IEC 60529 Housing IP20
Ambient Air Temperature	Operation 0 ... +50 °C Storage -20 ... +70 °C

Additional Information

Product Main Type	CP665
Product Name	Control Panels

Classifications

eClass	27-33-02-01
EPLAN Catalog Tree	Electrical engineering / General / General
UNSPSC	32151703

Environmental

SCIP	a93c87cf-555a-464d-adf4-46860c9d6ab4 Germany (DE)
WEEE B2C / B2B	Business To Business
WEEE Category	5. Small Equipment (No External Dimension More Than 50 cm)

PRODUCT-DETAILS

CP675-WEB

CP675-WEB Control Panel 15" TFT touch sc

For sale but "Obsolete", replaced by



General Information

Extended Product Type	CP675-WEB
Product ID	1SAP575200R0001
ABB Type Designation	CP675-WEB
EAN	4016779864978
Catalog Description	CP675-WEB Control Panel 15" TFT touch sc
Long Description	CP675-WEB Control Panel 15" TFT touch screen, 64 K colors, 1024 x 768 pixel, microbrowser

Ordering

Country of Origin	Italy (IT)
CN8	85381000
Invoice Description	CP675-WEB Control Panel 15" TFT touch sc
Made To Order	No
Minimum Order Quantity	1 piece
Order Multiple	1 piece
Selling Unit of Measure	piece
Replacement Product ID (NEW)	1SAP576200R0001

Product Net Weight	3.8 kg
Product Net Depth / Length	64 mm
Product Net Height	307 mm
Product Net Width	392 mm
Gross Weight	4.7 kg
Package Level 1 Depth / Length	505 mm
Package Level 1 Height	140 mm
Package Level 1 Width	410 mm
Package Level 1 Units	1 carton

Technical

Screen Size	4:3 screen 15 in
Screen Color	64k colors
Screen Resolution	1024 x 768 pixel
Communication Interface	1x Ethernet10/100 MBit 2x RS232/422/485 1x USB 2.0 Host 1x Aux port
Memory Size User Data	128 MB
Memory Size User Program	256 MB
Memory Type User Data	Flash Disk
Security	Password protection with 8 user levels
Degree of Protection	acc. to IEC 60529 Front IP66 acc. to IEC 60529 Housing IP20
Ambient Air Temperature	Operation 0 ... +50 °C Storage -20 ... +70 °C

Additional Information

Product Main Type	CP675
Product Name	Control Panels

Classifications

EPLAN Catalog Tree	Electrical engineering / PLC / General
--------------------	--

Environmental

WEEE B2C / B2B	Business To Business
WEEE Category	5. Small Equipment (No External Dimension More Than 50 cm)

PRODUCT-DETAILS

CP675-WEB

CP675-WEB Control Panel 15" TFT touch sc

For sale but "Obsolete", replaced by



General Information

Extended Product Type	CP675-WEB
Product ID	1SAP575200R0001
ABB Type Designation	CP675-WEB
EAN	4016779864978
Catalog Description	CP675-WEB Control Panel 15" TFT touch sc
Long Description	CP675-WEB Control Panel 15" TFT touch screen, 64 K colors, 1024 x 768 pixel, microbrowser

Ordering

Country of Origin	Italy (IT)
CN8	85381000
Invoice Description	CP675-WEB Control Panel 15" TFT touch sc
Made To Order	No
Minimum Order Quantity	1 piece
Order Multiple	1 piece
Selling Unit of Measure	piece
Replacement Product ID (NEW)	1SAP576200R0001

Dimensions

Product Net Weight	3.8 kg
Product Net Depth / Length	64 mm
Product Net Height	307 mm
Product Net Width	392 mm
Gross Weight	4.7 kg
Package Level 1 Depth / Length	505 mm
Package Level 1 Height	140 mm
Package Level 1 Width	410 mm
Package Level 1 Units	1 carton

Technical

Screen Size	4:3 screen 15 in
Screen Color	64k colors
Screen Resolution	1024 x 768 pixel
Communication Interface	1x Ethernet10/100 MBit 2x RS232/422/485 1x USB 2.0 Host 1x Aux port
Memory Size User Data	128 MB
Memory Size User Program	256 MB
Memory Type User Data	Flash Disk
Security	Password protection with 8 user levels
Degree of Protection	acc. to IEC 60529 Front IP66 acc. to IEC 60529 Housing IP20
Ambient Air Temperature	Operation 0 ... +50 °C Storage -20 ... +70 °C

Additional Information

Product Main Type	CP675
Product Name	Control Panels

Classifications

EPLAN Catalog Tree	Electrical engineering / PLC / General
--------------------	--

Environmental

WEEE B2C / B2B	Business To Business
WEEE Category	5. Small Equipment (No External Dimension More Than 50 cm)

PRODUCT-DETAILS

CP676

CP676 Control Panel 15" TFT touch screen



General Information

Extended Product Type	CP676
Product ID	1SAP576100R0001
ABB Type Designation	CP676
EAN	4013614493171
Catalog Description	CP676 Control Panel 15" TFT touch screen
Long Description	CP676 Control Panel 15" TFT touch screen, 64 K colors, 1024 x 768 pixel, PB610 runtime license

Ordering

Country of Origin	Italy (IT) Germany (DE) Finland (FI)
CN8	85371091
Invoice Description	CP676 Control Panel 15" TFT touch screen
Made To Order	No
Minimum Order Quantity	1 piece
Order Multiple	1 piece
Selling Unit of Measure	piece

Dimensions

Product Net Weight	3.3 kg
Product Net Depth / Length	64 mm

Product Net Height	307 mm
Product Net Width	392 mm
Gross Weight	4.9 kg
Package Level 1 Depth / Length	510 mm
Package Level 1 Height	145 mm
Package Level 1 Width	410 mm
Package Level 1 Units	1 carton

Technical

Screen Size	4:3 screen 15 in
Screen Color	64k colors
Screen Resolution	1024 x 768 pixel
Communication Interface	2x Ethernet 10/100Mbit 1x RS-232/-422/-485 2x USB 2.0 Host 1x SD-card slot 2x Expansion slot
Memory Size User Data	256 MB
Memory Size User Program	256 MB
Memory Type User Data	Flash Disk
Security	Password protection with 8 user levels
Degree of Protection	acc. to IEC 60529 Front IP66 acc. to IEC 60529 Housing IP20
Ambient Air Temperature	Operation 0 ... +50 °C Storage -20 ... +70 °C

Additional Information

Product Main Type	CP676
Product Name	Control Panels

Classifications

eClass	27-33-02-01
EPLAN Catalog Tree	Electrical engineering / General / General
UNSPSC	32151703

Environmental

SCIP	8ed3b3fc-07b0-437a-89a8-26d502a64d2c Germany (DE)
WEEE B2C / B2B	Business To Business
WEEE Category	5. Small Equipment (No External Dimension More Than 50 cm)

PRODUCT-DETAILS

CP676-WEB

CP676-WEB Control Panel 15" with microbrowser for V2.3 webserver



General Information

Extended Product Type	CP676-WEB
Product ID	1SAP576200R0001
ABB Type Designation	CP676-WEB
EAN	4013614493188
Catalog Description	CP676-WEB Control Panel 15" with microbrowser for V2.3 webserver
Long Description	CP676-WEB Control Panel 15" TFT touch screen, 64 K colors, 1024 x 768 pixel, microbrowser for V2.3 webserver

Ordering

Country of Origin	Italy (IT) Germany (DE)
CN8	85371091
Invoice Description	CP676-WEB Control Panel 15" with microbrowser for V2.3 webserver
Made To Order	No
Minimum Order Quantity	1 piece
Order Multiple	1 piece
Selling Unit of Measure	piece

Dimensions

Product Net Weight	3.3 kg
Product Net Depth / Length	64 mm

Product Net Height	307 mm
Product Net Width	392 mm
Gross Weight	4.9 kg
Package Level 1 Depth / Length	510 mm
Package Level 1 Height	145 mm
Package Level 1 Width	410 mm
Package Level 1 Units	1 carton

Technical

Screen Size	4:3 screen 15 in
Screen Color	64k colors
Screen Resolution	1024 x 768 pixel
Communication Interface	2x Ethernet 10/100Mbit 1x RS-232/-422/-485 2x USB 2.0 Host 1x SD-card slot 2x Expansion slot
Memory Size User Data	256 MB
Memory Size User Program	256 MB
Memory Type User Data	Flash Disk
Security	Password protection with 8 user levels
Degree of Protection	acc. to IEC 60529 Front IP66 acc. to IEC 60529 Housing IP20
Ambient Air Temperature	Operation 0 ... +50 °C Storage -20 ... +70 °C

Additional Information

Product Main Type	CP676
Product Name	Control Panels

Classifications

eClass	27-33-02-01
EPLAN Catalog Tree	Electrical engineering / General / General
UNSPSC	32151703

Environmental

SCIP	25e72737-7970-4bbb-8d7b-3656bafb5d1e Germany (DE)
WEEE B2C / B2B	Business To Business
WEEE Category	5. Small Equipment (No External Dimension More Than 50 cm)

PRODUCT-DETAILS

CP6407

Control panel. 7" TFT touch screen, 64 K colors, 800 x 480 pixel, Chromium Browser (CP6407)



General Information

Extended Product Type	CP6407
Product ID	1SAP540710R0001
ABB Type Designation	CP6407
EAN	4013614553240
Catalog Description	Control panel. 7" TFT touch screen, 64 K colors, 800 x 480 pixel, Chromium Browser (CP6407)
Long Description	CP6407: CP600 Control panel. 7" TFT touch screen, 64 K colors, 800 x 480 pixel, Chromium Browser. PB610 applications.

Ordering

Country of Origin	Italy (IT) United States (US) Finland (FI)
CN8	85371091
Invoice Description	Control panel. 7" TFT touch screen, 64 K colors, 800 x 480 pixel, Chromium Browser (CP6407)
Made To Order	No
Minimum Order Quantity	1 piece
Order Multiple	1 piece

Selling Unit of Measure

piece

Dimensions

Product Net Weight	0.92 kg
Product Net Depth / Length	42 mm
Product Net Height	147 mm
Product Net Width	187 mm
Gross Weight	1.425 kg
Package Level 1 Depth / Length	280 mm
Package Level 1 Height	120 mm
Package Level 1 Width	210 mm
Package Level 1 Units	1 carton

Technical

Function	7" TFT touch screen, 64 K colors, 800 x 480 pixel, Chromium Browser
Screen Size	7 in
Screen Color	65536 Colors
Screen Resolution	800 x 480 pixel
Display Type	TFT, resistive touch
Number of Hardware Interfaces	Industrial Ethernet 2 Other 1 Parallel 0 RS-232 0 RS-422 0 RS-485 0 Serial TTY 0 USB 2 Wireless 0 PROFINET 0
Memory Size	150000 kB
Security	50
Input Voltage Type	DC
Degree of Protection	Front IP66
Supply Voltage	18 ... 32 V DC
Built-In Depth (t ₂)	40 mm
Ambient Air Temperature	Operation -20 ... +60 °C

Additional Information

Product Main Type	CP6407
Product Name	Control Panels

Classifications

eClass	27-33-02-01
--------	-------------

Environmental

SCIP	c7c823eb-2719-4c07-9f93-6867edb4cb5a Germany (DE)
WEEE B2C / B2B	Business To Business
WEEE Category	5. Small Equipment (No External Dimension More Than 50 cm)

PRODUCT-DETAILS

CP6410

Control panel. 10.4" TFT touch screen, 64 K colors, 800 x 600 pixel, Chromium Browser (CP6410)



General Information

Extended Product Type	CP6410
Product ID	1SAP541010R0001
ABB Type Designation	CP6410
EAN	4013614553257
Catalog Description	Control panel. 10.4" TFT touch screen, 64 K colors, 800 x 600 pixel, Chromium Browser (CP6410)
Long Description	CP6410: CP600 Control panel. 10.4" TFT touch screen, 64 K colors, 800 x 600 pixel, Chromium Browser. PB610 applications.

Ordering

Country of Origin	Italy (IT) United States (US) Finland (FI)
CN8	85371091
Invoice Description	Control panel. 10.4" TFT touch screen, 64 K colors, 800 x 600 pixel, Chromium Browser (CP6410)
Made To Order	No
Minimum Order Quantity	1 piece
Order Multiple	1 piece
Selling Unit of Measure	piece

Dimensions

Product Net Weight	1.82 kg
Product Net Depth / Length	42 mm
Product Net Height	232 mm
Product Net Width	287 mm
Gross Weight	2 kg
Package Level 1 Depth / Length	370 mm
Package Level 1 Height	120 mm
Package Level 1 Width	270 mm
Package Level 1 Units	1 carton

Technical

Function	10.4" TFT touch screen, 64 K colors, 800 x 600 pixel, Chromium Browser
Screen Size	10.4 in
Screen Color	65536 Colors
Screen Resolution	800 x 600 pixel
Display Type	TFT, resistive touch
Number of Hardware Interfaces	Industrial Ethernet 2 Other 1 Parallel 0 RS-232 0 RS-422 0 RS-485 0 Serial TTY 0 USB 2 Wireless 0 PROFINET 0
Memory Size	150000 kB
Security	50
Input Voltage Type	DC
Degree of Protection	Front IP66
Supply Voltage	18 ... 32 V DC
Built-In Depth (t ₂)	40 mm
Ambient Air Temperature	Operation -20 ... +60 °C

Additional Information

Product Main Type	CP6410
Product Name	Control Panels

Classifications

eClass	27-33-02-01
ETIM 8	EC001412 - Graphic panel
UNSPSC	32151703

Environmental

SCIP	cd7c5984-4183-4bb7-9691-cc8520e0f0f0 Germany (DE)
WEEE B2C / B2B	Business To Business
WEEE Category	5. Small Equipment (No External Dimension More Than 50 cm)

PRODUCT-DETAILS

CP6415

Control panel. 15" TFT touch screen, 64 K colors, 1024 x 768 pixel, Chromium Browser (CP6415)



General Information

Extended Product Type	CP6415
Product ID	1SAP541510R0001
ABB Type Designation	CP6415
EAN	4013614553264
Catalog Description	Control panel. 15" TFT touch screen, 64 K colors, 1024 x 768 pixel, Chromium Browser (CP6415)
Long Description	CP6415: CP600 Control panel. 15" TFT touch screen, 64 K colors, 1024 x 768 pixel, Chromium Browser. PB610 applications.

Ordering

Country of Origin	Italy (IT) United States (US) Finland (FI)
CN8	85371091
Invoice Description	Control panel. 15" TFT touch screen, 64 K colors, 1024 x 768 pixel, Chromium Browser (CP6415)
Made To Order	No
Minimum Order Quantity	1 piece
Order Multiple	1 piece
Selling Unit of Measure	piece

Dimensions

Product Net Weight	3.19 kg
Product Net Depth / Length	47 mm
Product Net Height	307 mm
Product Net Width	392 mm
Gross Weight	3.5 kg
Package Level 1 Depth / Length	510 mm
Package Level 1 Height	145 mm
Package Level 1 Width	410 mm
Package Level 1 Units	1 carton

Technical

Function	15" TFT touch screen, 64 K colors, 1024 x 768 pixel, Chromium Browser
Screen Size	15 in
Screen Color	65536 Colors
Screen Resolution	1024 x 786 pixel
Display Type	TFT, resistive touch
Number of Hardware Interfaces	Industrial Ethernet 2 Other 1 Parallel 0 RS-232 0 RS-422 0 RS-485 0 Serial TTY 0 USB 2 Wireless 0 PROFINET 0
Memory Size	150000 kB
Security	50
Input Voltage Type	DC
Degree of Protection	Front IP66
Supply Voltage	18 ... 32 V DC
Built-In Depth (t ₂)	40 mm
Ambient Air Temperature	Operation -20 ... +60 °C

Additional Information

Product Main Type	CP6415
Product Name	Control Panels

Classifications

eClass	27-33-02-01
ETIM 8	EC001412 - Graphic panel
UNSPSC	32151703

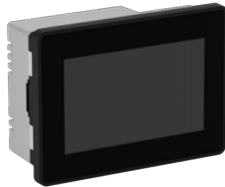
Environmental

SCIP	9d16d56e-059a-4654-b833-28272beaa3b1 Germany (DE)
WEEE B2C / B2B	Business To Business
WEEE Category	5. Small Equipment (No External Dimension More Than 50 cm)

PRODUCT-DETAILS

CP6605

Control panel. 5" TFT multi-touch screen, 64 K colors, 800 x 480 pixel, Chromium Browser (CP6605)



General Information

Extended Product Type	CP6605
Product ID	1SAP560510R0001
ABB Type Designation	CP6605
EAN	4013614529610
Catalog Description	Control panel. 5" TFT multi-touch screen, 64 K colors, 800 x 480 pixel, Chromium Browser (CP6605)
Long Description	CP6605: CP600-Pro Control panel. 5" TFT multi-touch screen, 64 K colors, 800 x 480 pixel, Chromium Browser. PB610 applications.

Ordering

Country of Origin	Italy (IT) Germany (DE) Finland (FI)
CN8	85371091
Invoice Description	Control panel. 5" TFT multi-touch screen, 64 K colors, 800 x 480 pixel, Chromium Browser (CP6605)
Made To Order	No
Minimum Order Quantity	1 piece
Order Multiple	1 piece
Selling Unit of Measure	piece

Dimensions

Product Net Weight	0.74 kg
Product Net Depth / Length	64 mm
Product Net Height	107 mm
Product Net Width	147 mm
Gross Weight	1.3 kg
Package Level 1 Depth / Length	260 mm
Package Level 1 Height	120 mm
Package Level 1 Width	190 mm
Package Level 1 Units	1 carton

Technical

Function	5" TFT multi-touch screen, 64 K colors, 800 x 480 pixel, Chromium Browser
Screen Size	5 in
Screen Color	65536 Colors
Screen Resolution	800 x 480 pixel
Display Type	TFT, capacitive multitouch
Number of Hardware Interfaces	Industrial Ethernet 2 Other 1 Parallel 0 RS-232 0 RS-422 0 RS-485 0 Serial TTY 0 USB 1 Wireless 0 PROFINET 0
Memory Size	60000 kB
Security	50
Input Voltage Type	DC
Degree of Protection	Front IP66
Supply Voltage	18 ... 32 V DC
Built-In Depth (t ₂)	52 mm
Ambient Air Temperature	Operation -20 ... +60 °C

Additional Information

Product Main Type	CP6605
Product Name	Control Panels

Classifications

eClass	27-33-02-01
EPLAN Catalog Tree	Electrical engineering / General / General
ETIM 8	EC001412 - Graphic panel
UNSPSC	32151703

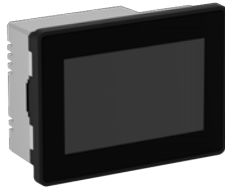
Environmental

SCIP	242e2067-5af0-4439-a0e8-2e45f85eba25 Germany (DE)
WEEE B2C / B2B	Business To Business

PRODUCT-DETAILS

CP6605

Control panel. 5" TFT multi-touch screen, 64 K colors, 800 x 480 pixel, Chromium Browser (CP6605)



General Information

Extended Product Type	CP6605
Product ID	1SAP560510R0001
ABB Type Designation	CP6605
EAN	4013614529610
Catalog Description	Control panel. 5" TFT multi-touch screen, 64 K colors, 800 x 480 pixel, Chromium Browser (CP6605)
Long Description	CP6605: CP600-Pro Control panel. 5" TFT multi-touch screen, 64 K colors, 800 x 480 pixel, Chromium Browser. PB610 applications.

Ordering

Country of Origin	Italy (IT) Germany (DE) Finland (FI)
CN8	85371091
Invoice Description	Control panel. 5" TFT multi-touch screen, 64 K colors, 800 x 480 pixel, Chromium Browser (CP6605)
Made To Order	No
Minimum Order Quantity	1 piece
Order Multiple	1 piece
Selling Unit of Measure	piece

Dimensions

Product Net Weight	0.74 kg
Product Net Depth / Length	64 mm
Product Net Height	107 mm
Product Net Width	147 mm
Gross Weight	1.3 kg
Package Level 1 Depth / Length	260 mm
Package Level 1 Height	120 mm
Package Level 1 Width	190 mm
Package Level 1 Units	1 carton

Technical

Function	5" TFT multi-touch screen, 64 K colors, 800 x 480 pixel, Chromium Browser
Screen Size	5 in
Screen Color	65536 Colors
Screen Resolution	800 x 480 pixel
Display Type	TFT, capacitive multitouch
Number of Hardware Interfaces	Industrial Ethernet 2 Other 1 Parallel 0 RS-232 0 RS-422 0 RS-485 0 Serial TTY 0 USB 1 Wireless 0 PROFINET 0
Memory Size	60000 kB
Security	50
Input Voltage Type	DC
Degree of Protection	Front IP66
Supply Voltage	18 ... 32 V DC
Built-In Depth (t ₂)	52 mm
Ambient Air Temperature	Operation -20 ... +60 °C

Additional Information

Product Main Type	CP6605
Product Name	Control Panels

Classifications

eClass	27-33-02-01
EPLAN Catalog Tree	Electrical engineering / General / General
ETIM 8	EC001412 - Graphic panel
UNSPSC	32151703

Environmental

SCIP	242e2067-5af0-4439-a0e8-2e45f85eba25 Germany (DE)
WEEE B2C / B2B	Business To Business

PRODUCT-DETAILS

CP6610

Control panel. 10.1" TFT multi-touch screen, 16 M colors, 1280 x 800 pixel, Chromium Browser (CP6610)



General Information

Extended Product Type	CP6610
Product ID	1SAP561010R0001
ABB Type Designation	CP6610
EAN	4013614529634
Catalog Description	Control panel. 10.1" TFT multi-touch screen, 16 M colors, 1280 x 800 pixel, Chromium Browser (CP6610)
Long Description	CP6610: CP600-Pro Control panel. 10.1" TFT multi-touch screen, 16 M colors, 1280 x 800 pixel, Chromium Browser. PB610 applications.

Ordering

Country of Origin	Italy (IT) Germany (DE) Finland (FI)
CN8	85371091
Invoice Description	Control panel. 10.1" TFT multi-touch screen, 16 M colors, 1280 x 800 pixel, Chromium Browser (CP6610)
Made To Order	No
Minimum Order Quantity	1 piece
Order Multiple	1 piece
Selling Unit of Measure	piece

Dimensions

Product Net Weight	1.7 kg
Product Net Depth / Length	64 mm
Product Net Height	197 mm
Product Net Width	282 mm
Gross Weight	2.5 kg
Package Level 1 Depth / Length	370 mm
Package Level 1 Height	120 mm
Package Level 1 Width	270 mm
Package Level 1 Units	1 carton

Technical

Function	10.1" TFT multi-touch screen, 16 M colors, 1280 x 800 pixel, Chromium Browser
Screen Size	10.1 in
Screen Color	16000000 Colors
Screen Resolution	1280 x 800 pixel
Display Type	TFT, capacitive multitouch
Number of Hardware Interfaces	Industrial Ethernet 3 Other 1 Parallel 0 RS-232 0 RS-422 0 RS-485 0 Serial TTY 0 USB 2 Wireless 0 PROFINET 0
Memory Size	240000 kB
Security	50
Input Voltage Type	DC
Degree of Protection	Front IP66
Supply Voltage	18 ... 32 V DC
Built-In Depth (t ₂)	52 mm
Ambient Air Temperature	Operation -20 ... +60 °C

Additional Information

Product Main Type	CP6610
Product Name	Control Panels

Classifications

eClass	27-33-02-01
EPLAN Catalog Tree	Electrical engineering / General / General
ETIM 8	EC001412 - Graphic panel
UNSPSC	32151703

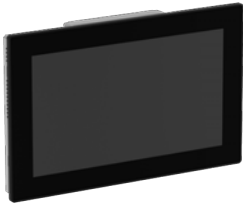
Environmental

SCIP	1ee17d0f-5264-43f0-a1ed-f5092f74b01c Germany (DE)
------	---

PRODUCT-DETAILS

CP6615

Control panel. 15.6" TFT multi-touch screen, 16 M colors, 1366 x 768 pixel, Chromium Browser (CP6615)



General Information

Extended Product Type	CP6615
Product ID	1SAP561510R0001
ABB Type Designation	CP6615
EAN	4013614529641
Catalog Description	Control panel. 15.6" TFT multi-touch screen, 16 M colors, 1366 x 768 pixel, Chromium Browser (CP6615)
Long Description	CP6615: CP600-Pro Control panel. 15.6" TFT multi-touch screen, 16 M colors, 1366 x 768 pixel, Chromium Browser. PB610 applications.

Ordering

Country of Origin	Italy (IT) Germany (DE) Finland (FI)
CN8	85371091
Invoice Description	Control panel. 15.6" TFT multi-touch screen, 16 M colors, 1366 x 768 pixel, Chromium Browser (CP6615)
Made To Order	No
Minimum Order Quantity	1 piece
Order Multiple	1 piece

Selling Unit of Measure

piece

Dimensions

Product Net Weight	3.33 kg
Product Net Depth / Length	64 mm
Product Net Height	267 mm
Product Net Width	422 mm
Gross Weight	4.5 kg
Package Level 1 Depth / Length	510 mm
Package Level 1 Height	145 mm
Package Level 1 Width	410 mm
Package Level 1 Units	1 carton

Technical

Function	15.6" TFT multi-touch screen, 16 M colors, 1366 x 768 pixel, Chromium Browser
Screen Size	15.6 in
Screen Color	16000000 Colors
Screen Resolution	1366 x 768 pixel
Display Type	TFT, capacitive multitouch
Number of Hardware Interfaces	Industrial Ethernet 3 Other 1 Parallel 0 RS-232 0 RS-422 0 RS-485 0 Serial TTY 0 USB 2 Wireless 0 PROFINET 0
Memory Size	240000 kB
Security	50
Input Voltage Type	DC
Degree of Protection	Front IP66
Supply Voltage	18 ... 32 V DC
Built-In Depth (t ₂)	56 mm
Ambient Air Temperature	Operation -20 ... +60 °C

Additional Information

Product Main Type	CP6615
Product Name	Control Panels

Classifications

eClass

27-33-02-01

EPLAN Catalog Tree	Electrical engineering / General / General
ETIM 8	EC001412 - Graphic panel
UNSPSC	32151703

Environmental

SCIP	cb63d514-1657-4973-82e9-9961acbb54ec Germany (DE)
WEEE B2C / B2B	Business To Business
WEEE Category	5. Small Equipment (No External Dimension More Than 50 cm)

PRODUCT-DETAILS

CP6621

Control panel. 21.5" TFT multi-touch screen, 16 M colors, 1920 x 1080 pixel, Chromium Browser (CP6621)



General Information

Extended Product Type	CP6621
Product ID	1SAP562110R0001
ABB Type Designation	CP6621
EAN	4013614529658
Catalog Description	Control panel. 21.5" TFT multi-touch screen, 16 M colors, 1920 x 1080 pixel, Chromium Browser (CP6621)
Long Description	CP6621: CP600-Pro Control panel. 21.5" TFT multi-touch screen, 16 M colors, 1920 x 1080 pixel, Chromium Browser. PB610 applications.

Ordering

Country of Origin	Italy (IT) Germany (DE) Finland (FI)
CN8	85371091
Invoice Description	Control panel. 21.5" TFT multi-touch screen, 16 M colors, 1920 x 1080 pixel, Chromium Browser (CP6621)
Made To Order	No
Minimum Order Quantity	1 piece
Order Multiple	1 piece
Selling Unit of Measure	piece

Dimensions

Product Net Weight	5.8 kg
Product Net Depth / Length	65 mm
Product Net Height	347 mm
Product Net Width	552 mm
Gross Weight	6 kg
Package Level 1 Depth / Length	655 mm
Package Level 1 Height	145 mm
Package Level 1 Width	450 mm
Package Level 1 Units	1 carton

Technical

Function	21.5" TFT multi-touch screen, 16 M colors, 1920 x 1080 pixel, Chromium Browser
Screen Size	21.5 in
Screen Color	16000000 Colors
Screen Resolution	1920 x 1080 pixel
Display Type	TFT, capacitive multitouch
Number of Hardware Interfaces	Industrial Ethernet 3 Other 1 Parallel 0 RS-232 0 RS-422 0 RS-485 0 Serial TTY 0 USB 2 Wireless 0 PROFINET 0
Memory Size	240000 kB
Security	50
Input Voltage Type	DC
Degree of Protection	Front IP66
Supply Voltage	18 ... 32 V DC
Built-In Depth (t ₂)	56 mm
Ambient Air Temperature	Operation -20 ... +60 °C

Additional Information

Product Main Type	CP6621
Product Name	Control Panels

Classifications

eClass	27-33-02-01
EPLAN Catalog Tree	Electrical engineering / General / General
ETIM 8	EC001412 - Graphic panel
UNSPSC	32151703

Environmental

SCIP	870cd730-6afc-4248-a300-90534a80fc57 Germany (DE)
WEEE B2C / B2B	Business To Business
WEEE Category	5. Small Equipment (No External Dimension More Than 50 cm)

PRODUCT-DETAILS

CP635-B

CP635 Control Panel 7" black TFT touch s



General Information

Extended Product Type	CP635-B
Product ID	1SAP535100R2001
ABB Type Designation	CP635-B
EAN	4016779881173
Catalog Description	CP635 Control Panel 7" black TFT touch s
Long Description	CP635 Control Panel 7" TFT touch screen, black, 64 K colors, 800 x 480 pixel, PB610 runtime license

Ordering

Country of Origin	Italy (IT) Germany (DE) Finland (FI)
CN8	85371091
Invoice Description	CP635 Control Panel 7" black TFT touch s
Made To Order	No
Minimum Order Quantity	1 piece
Order Multiple	1 piece
Selling Unit of Measure	piece

Dimensions

Product Net Weight	0.76 kg
Product Net Depth / Length	51 mm
Product Net Height	147 mm
Product Net Width	187 mm
Gross Weight	1.2 kg
Package Level 1 Depth / Length	280 mm
Package Level 1 Height	120 mm
Package Level 1 Width	210 mm
Package Level 1 Units	1 carton

Technical

Communication Interface	2x Ethernet 100 MBit RS232/422/485 2x USB 2.0 Host 1x SD card slot 2x Expansion Slot
Ambient Air Temperature	Operation 0 ... +50 °C Storage -20 ... +70 °C

Additional Information

Product Main Type	CP635
Product Name	Control Panels

Classifications

eClass	27-33-02-01
EPLAN Catalog Tree	Electrical engineering / General / General
UNSPSC	32151703

Environmental

SCIP	888c6a8a-79e9-4299-9e9a-951ef5dd3b14 Germany (DE)
WEEE B2C / B2B	Business To Business
WEEE Category	5. Small Equipment (No External Dimension More Than 50 cm)

PRODUCT-DETAILS

CP635-FB

CP635-FB Control Panel 7" TFT touch scr.



General Information

Extended Product Type	CP635-FB
Product ID	1SAP535110R6001
ABB Type Designation	CP635-FB
EAN	4013614516917
Catalog Description	CP635-FB Control Panel 7" TFT touch scr.
Long Description	CP635-FB:CP600, control panel,blue,IP69,TFT color-touchscreen, 7", 800 x 480 pixel, PB610 runtime

Ordering

Country of Origin	Italy (IT) Germany (DE) Finland (FI)
CN8	85371091
Invoice Description	CP635-FB Control Panel 7" TFT touch scr.
Made To Order	No
Minimum Order Quantity	1 piece
Order Multiple	1 piece
Selling Unit of Measure	piece

Dimensions

Product Net Weight	1.56 kg
Product Net Depth / Length	55.5 mm
Product Net Height	175 mm
Product Net Width	215 mm
Gross Weight	2.42 kg
Package Level 1 Depth / Length	280 mm
Package Level 1 Height	120 mm
Package Level 1 Width	210 mm
Package Level 1 Units	1 carton

Technical

Ambient Air Temperature	Operation -20 ... +60 °C Storage -40 ... +85 °C
-------------------------	--

Additional Information

Product Main Type	CP635
Product Name	Control Panels

Classifications

eClass	27-33-02-01
EPLAN Catalog Tree	Electrical engineering / General / General
UNSPSC	32151703

Environmental

SCIP	21ee91bc-a5ce-4234-9988-4c6033cce9e9 Germany (DE)
WEEE B2C / B2B	Business To Business
WEEE Category	5. Small Equipment (No External Dimension More Than 50 cm)

PRODUCT-DETAILS

CP635-FW

CP635-FW Control Panel 7" TFT touch scr.



General Information

Extended Product Type	CP635-FW
Product ID	1SAP535110R1001
ABB Type Designation	CP635-FW
EAN	4013614516924
Catalog Description	CP635-FW Control Panel 7" TFT touch scr.
Long Description	CP635-FW:CP600, control panel,white,IP69,TFT color-touchscreen, 7", 800 x 480 pixel, PB610 runtime

Ordering

Country of Origin	Italy (IT) Germany (DE) Finland (FI)
CN8	85371091
Invoice Description	CP635-FW Control Panel 7" TFT touch scr.
Made To Order	No
Minimum Order Quantity	1 piece
Order Multiple	1 piece
Selling Unit of Measure	piece

Dimensions

Product Net Weight	1.56 kg
Product Net Depth / Length	55.5 mm
Product Net Height	175 mm
Product Net Width	215 mm
Gross Weight	2.42 kg
Package Level 1 Depth / Length	280 mm
Package Level 1 Height	120 mm
Package Level 1 Width	210 mm
Package Level 1 Units	1 carton

Technical

Ambient Air Temperature	Operation -20 ... +60 °C Storage -40 ... +85 °C
-------------------------	--

Additional Information

Product Main Type	CP635
Product Name	Control Panels

Classifications

eClass	27-33-02-01
EPLAN Catalog Tree	Electrical engineering / General / General
UNSPSC	32151703

Environmental

SCIP	6a7860ea-a94e-40fb-af37-f379152d0ea0 Germany (DE)
WEEE B2C / B2B	Business To Business
WEEE Category	5. Small Equipment (No External Dimension More Than 50 cm)

PRODUCT-DETAILS

CP635-WEB

CP635-WEB Control Panel 7" with microbrowser for V2.3 webserver



General Information

Extended Product Type	CP635-WEB
Product ID	1SAP535200R0001
ABB Type Designation	CP635-WEB
EAN	4016779864916
Catalog Description	CP635-WEB Control Panel 7" with microbrowser for V2.3 webserver
Long Description	CP635-WEB Control Panel 7" TFT touch screen, 64 K colors, 800 x 480 pixel, microbrowser for V2.3 webserver

Ordering

Country of Origin	Italy (IT) Germany (DE)
CN8	85371091
Invoice Description	CP635-WEB Control Panel 7" with microbrowser for V2.3 webserver
Made To Order	No
Minimum Order Quantity	1 piece
Order Multiple	1 piece
Selling Unit of Measure	piece

Dimensions

Product Net Weight	0.76 kg
--------------------	---------

Product Net Depth / Length	51 mm
Product Net Height	147 mm
Product Net Width	187 mm
Gross Weight	1.2 kg
Package Level 1 Depth / Length	280 mm
Package Level 1 Height	120 mm
Package Level 1 Width	210 mm
Package Level 1 Units	1 carton

Technical

Screen Size	16:9 wide screen 7 in
Screen Color	64k colors
Screen Resolution	800 x 480 pixel
Communication Interface	2x Ethernet 100 MBit 1x RS232/422/485 2x USB 2.0 Host 1x SD card slot 2x Expansion slot
Memory Size User Data	128 MB
Memory Size User Program	256 MB
Memory Type User Data	Flash Disk
Security	Password protection with 8 user levels
Degree of Protection	acc. to IEC 60529 Front IP66 acc. to IEC 60529 Housing IP20
Ambient Air Temperature	Operation 0 ... +50 °C Storage -20 ... +70 °C

Additional Information

Product Main Type	CP635
Product Name	Control Panels

Classifications

eClass	27-33-02-01
EPLAN Catalog Tree	Electrical engineering / General / General
UNSPSC	32151703

Environmental

SCIP	31e1307a-5f2c-4ae6-9003-579c6e29d5dd Germany (DE)
WEEE B2C / B2B	Business To Business
WEEE Category	5. Small Equipment (No External Dimension More Than 50 cm)

PRODUCT-DETAILS

CP650

CP650 Control Panel 10.4" TFT touch scre



General Information

Extended Product Type	CP650
Product ID	1SAP550100R0001
ABB Type Designation	CP650
EAN	4016779864923
Catalog Description	CP650 Control Panel 10.4" TFT touch scre
Long Description	CP650 Control Panel 10.4" TFT touch screen, 64 K colors, 800 x 600 pixel, PB610 runtime license

Ordering

Country of Origin	Italy (IT)
CN8	85371091
Invoice Description	CP650 Control Panel 10.4" TFT touch scre
Made To Order	No
Minimum Order Quantity	1 piece
Order Multiple	1 piece
Selling Unit of Measure	piece
Replacement Product ID (NEW)	1SAP551100R0001

Dimensions

Product Net Weight	2.1 kg
Product Net Depth / Length	60 mm
Product Net Height	232 mm
Product Net Width	287 mm
Gross Weight	2.65 kg
Package Level 1 Depth / Length	380 mm
Package Level 1 Height	130 mm
Package Level 1 Width	280 mm
Package Level 1 Units	1 carton

Technical

Screen Size	4:3 screen 10.4 in
Screen Color	64k colors
Screen Resolution	800 x 600 pixel
Communication Interface	1x Ethernet10/100 MBit 2x RS232/422/485 1x USB 2.0 Host 1x Aux port
Memory Size User Data	128 MB
Memory Size User Program	256 MB
Memory Type User Data	Flash Disk
Security	Password protection with 8 user levels
Degree of Protection	acc. to IEC 60529 Front IP66 acc. to IEC 60529 Housing IP20
Ambient Air Temperature	Operation 0 ... +50 °C Storage -20 ... +70 °C

Additional Information

Product Main Type	CP650
Product Name	Control Panels

Classifications

eClass	27-33-02-01
EPLAN Catalog Tree	Electrical engineering / PLC / General
UNSPSC	32151703

Environmental

WEEE B2C / B2B	Business To Business
WEEE Category	5. Small Equipment (No External Dimension More Than 50 cm)

PRODUCT-DETAILS

CP650-WEB

CP650-WEB Control Panel 10.4" TFT touch

For sale but "Obsolete", replaced by



General Information

Extended Product Type	CP650-WEB
Product ID	1SAP550200R0001
ABB Type Designation	CP650-WEB
EAN	4016779864930
Catalog Description	CP650-WEB Control Panel 10.4" TFT touch
Long Description	CP650-WEB Control Panel 10.4" TFT touch screen, 64 K colors, 800 x 600 pixel, microbrowser

Ordering

Country of Origin	Italy (IT)
CN8	85371091
Invoice Description	CP650-WEB Control Panel 10.4" TFT touch
Made To Order	No
Minimum Order Quantity	1 piece
Order Multiple	1 piece
Selling Unit of Measure	piece
Replacement Product ID (NEW)	1SAP551200R0001

Dimensions

Product Net Weight	2.1 kg
Product Net Depth / Length	60 mm
Product Net Height	232 mm
Product Net Width	287 mm
Gross Weight	2.65 kg
Package Level 1 Depth / Length	380 mm
Package Level 1 Height	130 mm
Package Level 1 Width	280 mm
Package Level 1 Units	1 carton

Technical

Screen Size	4:3 screen 10.4 in
Screen Color	64k colors
Screen Resolution	800 x 600 pixel
Communication Interface	1x Ethernet10/100 MBit 2x RS232/422/485 1x USB 2.0 Host 1x Aux port
Memory Size User Data	128 MB
Memory Size User Program	256 MB
Memory Type User Data	Flash Disk
Security	Password protection with 8 user levels
Degree of Protection	acc. to IEC 60529 Front IP66 acc. to IEC 60529 Housing IP20
Ambient Air Temperature	Operation 0 ... +50 °C Storage -20 ... +70 °C

Additional Information

Product Main Type	CP650
Product Name	Control Panels

Classifications

eClass	27-33-02-01
EPLAN Catalog Tree	Electrical engineering / PLC / General
UNSPSC	32151703

Environmental

WEEE B2C / B2B	Business To Business
WEEE Category	5. Small Equipment (No External Dimension More Than 50 cm)

PRODUCT-DETAILS

CP651

CP651 Control Panel 10.4" TFT touch scre



General Information

Extended Product Type	CP651
Product ID	1SAP551100R0001
ABB Type Designation	CP651
EAN	4013614493119
Catalog Description	CP651 Control Panel 10.4" TFT touch scre
Long Description	CP651 Control Panel 10.4" TFT touch screen, 64 K colors, 800 x 600 pixel, PB610 runtime license

Ordering

Country of Origin	Italy (IT) Germany (DE) Finland (FI)
CN8	85371091
Invoice Description	CP651 Control Panel 10.4" TFT touch scre
Made To Order	No
Minimum Order Quantity	1 piece
Order Multiple	1 piece
Selling Unit of Measure	piece

Dimensions

Product Net Weight	2.05 kg
Product Net Depth / Length	60 mm
Product Net Height	232 mm
Product Net Width	287 mm
Gross Weight	2.9 kg
Package Level 1 Depth / Length	370 mm
Package Level 1 Height	120 mm
Package Level 1 Width	270 mm
Package Level 1 Units	1 carton

Technical

Screen Size	4:3 screen 10.4 in
Screen Color	64k colors
Screen Resolution	800 x 600 pixel
Communication Interface	2x Ethernet 10/100Mbit 1x RS-232/-422/-485 2x USB 2.0 Host 1x SD-card slot 2x Expansion slot
Memory Size User Data	256 MB
Memory Size User Program	256 MB
Memory Type User Data	Flash Disk
Security	Password protection with 8 user levels
Degree of Protection	acc. to IEC 60529 Front IP66 acc. to IEC 60529 Housing IP20
Ambient Air Temperature	Operation 0 ... +50 °C Storage -20 ... +70 °C

Additional Information

Product Main Type	CP651
Product Name	Control Panels

Classifications

eClass	27-33-02-01
EPLAN Catalog Tree	Electrical engineering / General / General
UNSPSC	32151703

Environmental

SCIP	bb117a70-1600-49ce-a95b-f529f2bf3448 Germany (DE)
WEEE B2C / B2B	Business To Business
WEEE Category	5. Small Equipment (No External Dimension More Than 50 cm)

PRODUCT-DETAILS

CP651-WEB

CP651-WEB Control Panel 10.4" with microbrowser for V2.3 webserver



General Information

Extended Product Type	CP651-WEB
Product ID	1SAP551200R0001
ABB Type Designation	CP651-WEB
EAN	4013614493126
Catalog Description	CP651-WEB Control Panel 10.4" with microbrowser for V2.3 webserver
Long Description	CP651-WEB Control Panel 10.4" 64 K colors, 800 x 600 pixel, microbr.f.V2.3websv.

Ordering

Country of Origin	Italy (IT) Germany (DE)
CN8	85371091
Invoice Description	CP651-WEB Control Panel 10.4" with microbrowser for V2.3 webserver
Made To Order	No
Minimum Order Quantity	1 piece
Order Multiple	1 piece
Selling Unit of Measure	piece

Dimensions

Product Net Weight	2.05 kg 60 mm
--------------------	------------------

Length

Product Net Height	232 mm
Product Net Width	287 mm
Gross Weight	2.9 kg
Package Level 1 Depth / Length	370 mm
Package Level 1 Height	120 mm
Package Level 1 Width	270 mm
Package Level 1 Units	1 carton

Technical

Screen Size	4:3 screen 10.4 in
Screen Color	64k colors
Screen Resolution	800 x 600 pixel
Communication Interface	2x Ethernet 10/100Mbit 1x RS-232/-422/-485 2x USB 2.0 Host 1x SD-card slot 2x Expansion slot
Memory Size User Data	256 MB
Memory Size User Program	256 MB
Memory Type User Data	Flash Disk
Security	Password protection with 8 user levels
Degree of Protection	acc. to IEC 60529 Front IP66 acc. to IEC 60529 Housing IP20
Ambient Air Temperature	Operation 0 ... +50 °C Storage -20 ... +70 °C

Additional Information

Product Main Type	CP651
Product Name	Control Panels

Classifications

eClass	27-33-02-01
EPLAN Catalog Tree	Electrical engineering / General / General
UNSPSC	32151703

Environmental

SCIP	898793fa-783c-490a-a824-059113e96af5 Germany (DE)
WEEE B2C / B2B	Business To Business
WEEE Category	5. Small Equipment (No External Dimension More Than 50 cm)

PRODUCT-DETAILS

CP660

CP660 Control Panel 12.1" TFT touch scre



General Information

Extended Product Type	CP660
Product ID	1SAP560100R0001
ABB Type Designation	CP660
EAN	4016779864947
Catalog Description	CP660 Control Panel 12.1" TFT touch scre
Long Description	CP660 Control Panel 12.1" TFT touch screen, 64 K colors, 800 x 600 pixel, PB610 runtime license

Ordering

Country of Origin	Italy (IT)
CN8	85371091
Invoice Description	CP660 Control Panel 12.1" TFT touch scre
Made To Order	No
Minimum Order Quantity	1 piece
Order Multiple	1 piece
Selling Unit of Measure	piece
Replacement Product ID (NEW)	1SAP561100R0001

Dimensions

Product Net Weight	2.9 kg
Product Net Depth / Length	60 mm
Product Net Height	267 mm
Product Net Width	336 mm
Gross Weight	3.8 kg
Package Level 1 Depth / Length	415 mm
Package Level 1 Height	135 mm
Package Level 1 Width	340 mm
Package Level 1 Units	1 carton

Technical

Screen Size	4:3 screen 12.1 in
Screen Color	64k colors
Screen Resolution	800 x 600 pixel
Communication Interface	1x Ethernet10/100 MBit 2x RS232/422/485 1x USB 2.0 Host 1x Aux port
Memory Size User Data	128 MB
Memory Size User Program	256 MB
Memory Type User Data	Flash Disk
Security	Password protection with 8 user levels
Degree of Protection	acc. to IEC 60529 Front IP66 acc. to IEC 60529 Housing IP20
Ambient Air Temperature	Operation 0 ... +50 °C Storage -20 ... +70 °C

Additional Information

Product Main Type	CP660
Product Name	Control Panels

Classifications

eClass	27-33-02-01
EPLAN Catalog Tree	Electrical engineering / PLC / General
UNSPSC	32151703

Environmental

WEEE B2C / B2B	Business To Business
WEEE Category	5. Small Equipment (No External Dimension More Than 50 cm)

PRODUCT-DETAILS

CP660-WEB

CP660-WEB Control Panel 12.1" TFT touch

For sale but "Obsolete", replaced by



General Information

Extended Product Type	CP660-WEB
Product ID	1SAP560200R0001
ABB Type Designation	CP660-WEB
EAN	4016779864954
Catalog Description	CP660-WEB Control Panel 12.1" TFT touch
Long Description	CP660-WEB Control Panel 12.1" TFT touch screen, 64 K colors, 800 x 600 pixel, microbrowser

Ordering

Country of Origin	Italy (IT)
CN8	85371091
Invoice Description	CP660-WEB Control Panel 12.1" TFT touch
Made To Order	No
Minimum Order Quantity	1 piece
Order Multiple	1 piece
Selling Unit of Measure	piece
Replacement Product ID (NEW)	1SAP561200R0001

Dimensions

Product Net Weight	2.9 kg
Product Net Depth / Length	60 mm
Product Net Height	267 mm
Product Net Width	336 mm
Gross Weight	3.8 kg
Package Level 1 Depth / Length	415 mm
Package Level 1 Height	135 mm
Package Level 1 Width	340 mm
Package Level 1 Units	1 carton

Technical

Screen Size	4:3 screen 12.1 in
Screen Color	64k colors
Screen Resolution	800 x 600 pixel
Communication Interface	1x Ethernet10/100 MBit 2x RS232/422/485 1x USB 2.0 Host 1x Aux port
Memory Size User Data	128 MB
Memory Size User Program	256 MB
Memory Type User Data	Flash Disk
Security	Password protection with 8 user levels
Degree of Protection	acc. to IEC 60529 Front IP66 acc. to IEC 60529 Housing IP20
Ambient Air Temperature	Operation 0 ... +50 °C Storage -20 ... +70 °C

Additional Information

Product Main Type	CP660
Product Name	Control Panels

Classifications

eClass	27-33-02-01
EPLAN Catalog Tree	Electrical engineering / PLC / General
UNSPSC	32151703

Environmental

WEEE B2C / B2B	Business To Business
WEEE Category	5. Small Equipment (No External Dimension More Than 50 cm)

PRODUCT-DETAILS

CP661

CP661 Control Panel 12.1" TFT touch scre



General Information

Extended Product Type	CP661
Product ID	1SAP561100R0001
ABB Type Designation	CP661
EAN	4013614493133
Catalog Description	CP661 Control Panel 12.1" TFT touch scre
Long Description	CP661 Control Panel 12.1" TFT touch screen, 64 K colors, 800 x 600 pixel, PB610 runtime license

Ordering

Country of Origin	Italy (IT) Germany (DE) Finland (FI)
CN8	85371091
Invoice Description	CP661 Control Panel 12.1" TFT touch scre
Made To Order	No
Minimum Order Quantity	1 piece
Order Multiple	1 piece
Selling Unit of Measure	piece

Dimensions

Product Net Weight	2.65 kg
Product Net Depth / Length	60 mm
Product Net Height	267 mm
Product Net Width	336 mm
Gross Weight	3.031 kg
Package Level 1 Depth / Length	420 mm
Package Level 1 Height	140 mm
Package Level 1 Width	340 mm
Package Level 1 Units	1 carton

Technical

Screen Size	4:3 screen 12.1 in
Screen Color	64k colors
Screen Resolution	800 x 600 pixel
Communication Interface	2x Ethernet 10/100Mbit 1x RS-232/-422/-485 2x USB 2.0 Host 1x SD-card slot 2x Expansion slot
Memory Size User Data	256 MB
Memory Size User Program	256 MB
Memory Type User Data	Flash Disk
Security	Password protection with 8 user levels
Degree of Protection	acc. to IEC 60529 Front IP66 acc. to IEC 60529 Housing IP20
Ambient Air Temperature	Operation 0 ... +50 °C Storage -20 ... +70 °C

Additional Information

Product Main Type	CP661
Product Name	Control Panels

Classifications

eClass	27-33-02-01
EPLAN Catalog Tree	Electrical engineering / General / General
UNSPSC	32151703

Environmental

SCIP	437c1011-b061-4596-ac17-6e05d15fd335 Germany (DE)
WEEE B2C / B2B	Business To Business
WEEE Category	5. Small Equipment (No External Dimension More Than 50 cm)

PRODUCT-DETAILS

CP661-WEB

CP661-WEB Control Panel 12.1" microbr. for V2.3 webserver



General Information

Extended Product Type	CP661-WEB
Product ID	1SAP561200R0001
ABB Type Designation	CP661-WEB
EAN	4013614493140
Catalog Description	CP661-WEB Control Panel 12.1" microbr. for V2.3 webserver
Long Description	CP661-WEB Control Panel 12.1" TFT touch screen, 64 K colors, 800 x 600 pixel, microbrowser for V2.3 webserver

Ordering

Country of Origin	Italy (IT) Germany (DE)
CN8	85371091
Invoice Description	CP661-WEB Control Panel 12.1" microbr. for V2.3 webserver
Made To Order	No
Minimum Order Quantity	1 piece
Order Multiple	1 piece
Selling Unit of Measure	piece

Dimensions

Product Net Weight	2.65 kg
Product Net Depth / Length	60 mm

Product Net Height	267 mm
Product Net Width	336 mm
Gross Weight	3.031 kg
Package Level 1 Depth / Length	420 mm
Package Level 1 Height	140 mm
Package Level 1 Width	340 mm
Package Level 1 Units	1 carton

Technical

Screen Size	4:3 screen 12.1 in
Screen Color	64k colors
Screen Resolution	800 x 600 pixel
Communication Interface	2x Ethernet 10/100Mbit 1x RS-232/-422/-485 2x USB 2.0 Host 1x SD-card slot 2x Expansion slot
Memory Size User Data	256 MB
Memory Size User Program	256 MB
Memory Type User Data	Flash Disk
Security	Password protection with 8 user levels
Degree of Protection	acc. to IEC 60529 Front IP66 acc. to IEC 60529 Housing IP20
Ambient Air Temperature	Operation 0 ... +50 °C Storage -20 ... +70 °C

Additional Information

Product Main Type	CP661
Product Name	Control Panels

Classifications

eClass	27-33-02-01
EPLAN Catalog Tree	Electrical engineering / General / General
UNSPSC	32151703

Environmental

SCIP	2c343943-7f1d-4794-b874-c0941779ffea Germany (DE)
WEEE B2C / B2B	Business To Business
WEEE Category	5. Small Equipment (No External Dimension More Than 50 cm)

PRODUCT-DETAILS

CP665

CP665 Control Panel 13.3" TFT touch scre



General Information

Extended Product Type	CP665
Product ID	1SAP565100R0001
ABB Type Designation	CP665
EAN	4013614493157
Catalog Description	CP665 Control Panel 13.3" TFT touch scre
Long Description	CP665 Control Panel 13.3" TFT touch screen, 64 K colors, 1280 x 800 pixel, PB610 runtime license

Ordering

Country of Origin	Italy (IT) Germany (DE) Finland (FI)
CN8	85371091
Invoice Description	CP665 Control Panel 13.3" TFT touch scre
Made To Order	No
Minimum Order Quantity	1 piece
Order Multiple	1 piece
Selling Unit of Measure	piece

Dimensions

Product Net Weight	2.34 kg
Product Net Depth / Length	60 mm
Product Net Height	267 mm
Product Net Width	336 mm
Gross Weight	3.4 kg
Package Level 1 Depth / Length	420 mm
Package Level 1 Height	140 mm
Package Level 1 Width	340 mm
Package Level 1 Units	1 carton

Technical

Screen Size	16:9 wide screen 13.3 in
Screen Color	64k colors
Screen Resolution	1280 x 800 pixel
Communication Interface	2x Ethernet 10/100Mbit 1x RS-232/-422/-485 2x USB 2.0 Host 1x SD-card slot 2x Expansion slot
Memory Size User Data	256 MB
Memory Size User Program	256 MB
Memory Type User Data	Flash Disk
Security	Password protection with 8 user levels
Degree of Protection	acc. to IEC 60529 Front IP66 acc. to IEC 60529 Housing IP20
Ambient Air Temperature	Operation 0 ... +50 °C Storage -20 ... +70 °C

Additional Information

Product Main Type	CP665
Product Name	Control Panels

Classifications

eClass	27-33-02-01
EPLAN Catalog Tree	Electrical engineering / General / General
UNSPSC	32151703

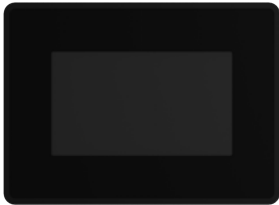
Environmental

SCIP	b4f56326-b2bd-426a-b1d4-6a9638409922 Germany (DE)
WEEE B2C / B2B	Business To Business
WEEE Category	5. Small Equipment (No External Dimension More Than 50 cm)

PRODUCT-DETAILS

CP604-B

Control panel. 4.3" TFT touch screen, 64 K colors, 480x272 pixel, black front (CP604-B)



General Information

Extended Product Type	CP604-B
Product ID	1SAP504100R2001
ABB Type Designation	CP604-B
EAN	4013614527586
Catalog Description	Control panel. 4.3" TFT touch screen, 64 K colors, 480x272 pixel, black front (CP604-B)
Long Description	CP604-B: CP600-eCo Control panel. 4.3" TFT touch screen, 64 K colors, 480x272 pixel, black front. PB610 applications.

Ordering

Country of Origin	Italy (IT) United States (US) Finland (FI)
CN8	85371091
Invoice Description	Control panel. 4.3" TFT touch screen, 64 K colors, 480x272 pixel, black front (CP604-B)
Made To Order	No
Minimum Order Quantity	1 piece
Order Multiple	1 piece
Selling Unit of Measure	piece

Dimensions

Product Net Weight	0.29 kg
Product Net Depth / Length	34 mm
Product Net Height	107 mm
Product Net Width	147 mm
Gross Weight	0.65 kg
Package Level 1 Depth / Length	241 mm
Package Level 1 Height	97 mm
Package Level 1 Width	202 mm
Package Level 1 Units	1 carton

Technical

Function	4.3" TFT touch screen, 64 K colors, 480x272 pixel, black front
Screen Size	4.3 in
Screen Color	65536 Colors
Screen Resolution	480 x 272 pixel
Display Type	TFT, resistive touch
Number of Hardware Interfaces	Industrial Ethernet 1 Other 1 Parallel 0 RS-232 0 RS-422 0 RS-485 0 Serial TTY 0 USB 1 Wireless 0 PROFINET 0
Memory Size	60000 kB
Security	50
Input Voltage Type	DC
Degree of Protection	Front IP66
Supply Voltage	18 ... 32 V DC
Built-In Depth (t ₂)	29 mm
Ambient Air Temperature	Operation 0 ... 50 °C

Additional Information

Product Main Type	CP604
Product Name	Control Panels

Classifications

eClass	27-33-02-01
EPLAN Catalog Tree	Electrical engineering / General / General

Environmental

SCIP	f9e51503-16b2-49a0-842f-765f83a80e9a Germany (DE)
WEEE B2C / B2B	Business To Business
WEEE Category	5. Small Equipment (No External Dimension More Than 50 cm)

PRODUCT-DETAILS

CP607

Control panel. 7" TFT touch screen, 64 K colors, 800x480 pixel (CP607)



General Information

Extended Product Type	CP607
Product ID	1SAP507100R0001
ABB Type Designation	CP607
EAN	4013614506826
Catalog Description	Control panel. 7" TFT touch screen, 64 K colors, 800x480 pixel (CP607)
Long Description	CP607: CP600-eCo Control panel. 7" TFT touch screen, 64 K colors, 800x480 pixel. PB610 applications.

Ordering

Country of Origin	Italy (IT) Taiwan, Province Of China (TW) Finland (FI)
CN8	85371091
Invoice Description	Control panel. 7" TFT touch screen, 64 K colors, 800x480 pixel (CP607)
Made To Order	No
Minimum Order Quantity	1 piece
Order Multiple	1 piece
Selling Unit of Measure	piece

Dimensions

Product Net Weight	0.5 kg
Product Net Depth / Length	34 mm
Product Net Height	147 mm
Product Net Width	187 mm
Gross Weight	0.875 kg
Package Level 1 Depth / Length	241 mm
Package Level 1 Height	97 mm
Package Level 1 Width	202 mm
Package Level 1 Units	1 carton

Technical

Function	7" TFT touch screen, 64 K colors, 800x480 pixel
Screen Size	7 in
Screen Color	65536 Colors
Screen Resolution	800 x 480 pixel
Display Type	TFT, resistive touch
Number of Hardware Interfaces	Industrial Ethernet 1 Other 1 Parallel 0 RS-232 0 RS-422 0 RS-485 0 Serial TTY 0 USB 1 Wireless 0 PROFINET 0
Memory Size	60000 kB
Security	50
Input Voltage Type	DC
Degree of Protection	Front IP66
Supply Voltage	18 ... 32 V DC
Built-In Depth (t ₂)	29 mm
Ambient Air Temperature	Operation 0 ... 50 °C

Additional Information

Product Main Type	CP607
Product Name	Control Panels

Classifications

eClass	27-33-02-01
EPLAN Catalog Tree	Electrical engineering / General / General
ETIM 8	EC001412 - Graphic panel

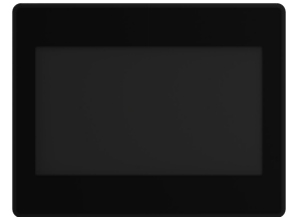
Environmental

SCIP	7b71da1c-daad-4973-9735-361608bd383d Germany (DE)
WEEE B2C / B2B	Business To Business
WEEE Category	5. Small Equipment (No External Dimension More Than 50 cm)

PRODUCT-DETAILS

CP607-B

Control panel. 7" TFT touch screen, 64 K colors, 800x480 pixel, black front (CP607-B)



General Information

Extended Product Type	CP607-B
Product ID	1SAP507100R2001
ABB Type Designation	CP607-B
EAN	4013614527593
Catalog Description	Control panel. 7" TFT touch screen, 64 K colors, 800x480 pixel, black front (CP607-B)
Long Description	CP607-B: CP600-eCo Control panel. 7" TFT touch screen, 64 K colors, 800x480 pixel, black front. PB610 applications.

Ordering

Country of Origin	Italy (IT) United States (US) Taiwan, Province Of China (TW) Finland (FI)
CN8	85371091
Invoice Description	Control panel. 7" TFT touch screen, 64 K colors, 800x480 pixel, black front (CP607-B)
Made To Order	No
Minimum Order Quantity	1 piece
Order Multiple	1 piece

Selling Unit of Measure

piece

Dimensions

Product Net Weight	0.5 kg
Product Net Depth / Length	34 mm
Product Net Height	147 mm
Product Net Width	187 mm
Gross Weight	0.875 kg
Package Level 1 Depth / Length	241 mm
Package Level 1 Height	97 mm
Package Level 1 Width	202 mm
Package Level 1 Units	1 carton

Technical

Function	7" TFT touch screen, 64 K colors, 800x480 pixel, black front
Screen Size	7 in
Screen Color	65536 Colors
Screen Resolution	800 x 480 pixel
Display Type	TFT, resistive touch
Number of Hardware Interfaces	Industrial Ethernet 1 Other 1 Parallel 0 RS-232 0 RS-422 0 RS-485 0 Serial TTY 0 USB 1 Wireless 0 PROFINET 0
Memory Size	60000 kB
Security	50
Input Voltage Type	DC
Degree of Protection	Front IP66
Supply Voltage	18 ... 32 V DC
Built-In Depth (t ₂)	29 mm
Ambient Air Temperature	Operation 0 ... 50 °C

Additional Information

Product Main Type	CP607
Product Name	Control Panels

Classifications

eClass	27-33-02-01
--------	-------------

ETIM 8

EC001412 - Graphic panel

UNSPSC

32151703

Environmental

SCIP

bf680939-37a5-45d8-a8c7-56a4e95e88b1 Germany (DE)

WEEE B2C / B2B

Business To Business

WEEE Category

5. Small Equipment (No External Dimension More Than 50 cm)

PRODUCT-DETAILS

CP610

Control panel. 10.1" TFT touch screen, 64 K colors, 1024x600 pixel, Chromium Browser (CP610)



General Information

Extended Product Type	CP610
Product ID	1SAP510100R0001
ABB Type Designation	CP610
EAN	4013614506833
Catalog Description	Control panel. 10.1" TFT touch screen, 64 K colors, 1024x600 pixel, Chromium Browser (CP610)
Long Description	CP610: CP600-eCo Control panel. 10.1" TFT touch screen, 64 K colors, 1024x600 pixel, Chromium Browser. PB610 applications.

Ordering

Country of Origin	Italy (IT) Taiwan, Province Of China (TW) Finland (FI)
CN8	85371091
Invoice Description	Control panel. 10.1" TFT touch screen, 64 K colors, 1024x600 pixel, Chromium Browser (CP610)
Made To Order	No
Minimum Order Quantity	1 piece
Order Multiple	1 piece
Selling Unit of Measure	piece

Dimensions

Product Net Weight	0.82 kg
Product Net Depth / Length	35 mm
Product Net Height	197 mm
Product Net Width	282 mm
Gross Weight	1.57 kg
Package Level 1 Depth / Length	345 mm
Package Level 1 Height	103 mm
Package Level 1 Width	250 mm
Package Level 1 Units	1 carton

Technical

Function	10.1" TFT touch screen, 64 K colors, 1024x600 pixel, Chromium Browser
Screen Size	10.1 in
Screen Color	65536 Colors
Screen Resolution	1024 x 600 pixel
Display Type	TFT, resistive touch
Number of Hardware Interfaces	Industrial Ethernet 1 Other 1 Parallel 0 RS-232 0 RS-422 0 RS-485 0 Serial TTY 0 USB 1 Wireless 0 PROFINET 0
Memory Size	60000 kB
Security	50
Input Voltage Type	DC
Degree of Protection	Front IP66
Supply Voltage	18 ... 32 V DC
Built-In Depth (t ₂)	29 mm
Ambient Air Temperature	Operation 0 ... 50 °C

Additional Information

Product Main Type	CP610
Product Name	Control Panels

Classifications

eClass	27-33-02-01
EPLAN Catalog Tree	Electrical engineering / General / General
ETIM 8	EC001412 - Graphic panel
UNSPSC	32151703

Environmental

SCIP	8a6b8484-d48a-41ea-aa12-f60334ebc01f Germany (DE)
WEEE B2C / B2B	Business To Business

PRODUCT-DETAILS

CP610-B

Control panel. 10.1" TFT touch screen, 64 K colors, 1024x600 pixel, Chromium Browser, black front (CP610-B)



General Information

Extended Product Type	CP610-B
Product ID	1SAP510100R2001
ABB Type Designation	CP610-B
EAN	4013614527609
Catalog Description	Control panel. 10.1" TFT touch screen, 64 K colors, 1024x600 pixel, Chromium Browser, black front (CP610-B)
Long Description	CP610-B: CP600-eCo Control panel. 10.1" TFT touch screen, 64 K colors, 1024x600 pixel, Chromium Browser, black front. PB610 applications.

Ordering

Country of Origin	Taiwan, Province Of China (TW) United States (US) Finland (FI)
CN8	85371091
Invoice Description	Control panel. 10.1" TFT touch screen, 64 K colors, 1024x600 pixel, Chromium Browser, black front (CP610-B)
Made To Order	No
Minimum Order Quantity	1 piece
Order Multiple	1 piece
Selling Unit of Measure	piece

Dimensions

Product Net Weight	1 kg
Product Net Depth / Length	35 mm
Product Net Height	197 mm
Product Net Width	282 mm
Gross Weight	1.3 kg
Package Level 1 Depth / Length	345 mm
Package Level 1 Height	103 mm
Package Level 1 Width	250 mm
Package Level 1 Units	1 carton

Technical

Function	10.1" TFT touch screen, 64 K colors, 1024x600 pixel, Chromium Browser, black front
Screen Size	10.1 in
Screen Color	65536 Colors
Screen Resolution	1024 x 600 pixel
Display Type	TFT, resistive touch
Number of Hardware Interfaces	Industrial Ethernet 1 Other 1 Parallel 0 RS-232 0 RS-422 0 RS-485 0 Serial TTY 0 USB 1 Wireless 0 PROFINET 0
Memory Size	60000 kB
Security	50
Input Voltage Type	DC
Degree of Protection	Front IP66
Supply Voltage	18 ... 32 V DC
Built-In Depth (t ₂)	29 mm
Ambient Air Temperature	Operation 0 ... 50 °C

Additional Information

Product Main Type	CP610
Product Name	Control Panels

Classifications

eClass	27-33-02-01
EPLAN Catalog Tree	Electrical engineering / General / General
ETIM 8	EC001412 - Graphic panel
UNSPSC	32151703

Environmental

SCIP	3dc4f426-9429-41e0-bd68-1d48e71159f5 Germany (DE)
------	---

PRODUCT-DETAILS

CP620-WEB

CP620-WEB Control Panel 4.3" microbr.f. V2.3 webserver



General Information

Extended Product Type	CP620-WEB
Product ID	1SAP520200R0001
ABB Type Designation	CP620-WEB
EAN	4016779864879
Catalog Description	CP620-WEB Control Panel 4.3" microbr.f. V2.3 webserver
Long Description	CP620-WEB Control Panel 4.3" TFT touch screen, 64 K colors, 480 x 272 pixel, microbrowser for V2.3 webserver

Ordering

Country of Origin	Italy (IT) Germany (DE)
CN8	85371091
Invoice Description	CP620-WEB Control Panel 4.3" microbr.f. V2.3 webserver
Made To Order	No
Minimum Order Quantity	1 piece
Order Multiple	1 piece
Selling Unit of Measure	piece

Dimensions

Product Net Weight	0.88 kg
--------------------	---------

Product Net Depth / Length	56 mm
Product Net Height	107 mm
Product Net Width	147 mm
Gross Weight	1.3 kg
Package Level 1 Depth / Length	260 mm
Package Level 1 Height	120 mm
Package Level 1 Width	190 mm
Package Level 1 Units	1 carton

Technical

Screen Size	16:9 wide screen 4.3 in
Screen Color	64k colors
Screen Resolution	480 x 272 pixel
Communication Interface	2x Ethernet 100 MBit 1x RS232/422/485 1x USB 2.0 Host 1x SD card slot 1x Expansion slot
Memory Size User Data	128 MB
Memory Size User Program	256 MB
Memory Type User Data	Flash Disk
Security	Password protection with 8 user levels
Degree of Protection	acc. to IEC 60529 Front IP66 acc. to IEC 60529 Housing IP20
Ambient Air Temperature	Operation 0 ... +50 °C Storage -20 ... +70 °C

Additional Information

Product Main Type	CP620
Product Name	Control Panels

Classifications

eClass	27-33-02-01
EPLAN Catalog Tree	Electrical engineering / General / General
UNSPSC	32151703

Environmental

SCIP	0ddd2a5c-93fb-44ee-85ef-0181c498fe89 Germany (DE)
WEEE B2C / B2B	Business To Business
WEEE Category	5. Small Equipment (No External Dimension More Than 50 cm)

PRODUCT-DETAILS

CP630

CP630 Control Panel 5.7" TFT touch scree



General Information

Extended Product Type	CP630
Product ID	1SAP530100R0001
ABB Type Designation	CP630
EAN	4016779864886
Catalog Description	CP630 Control Panel 5.7" TFT touch scree
Long Description	CP630 Control Panel 5.7" TFT touch screen, 64 K colors, 320 x 240 pixel, PB610 runtime license

Ordering

Country of Origin	Italy (IT) Germany (DE) Finland (FI)
CN8	85371091
Invoice Description	CP630 Control Panel 5.7" TFT touch scree
Made To Order	No
Minimum Order Quantity	1 piece
Order Multiple	1 piece
Selling Unit of Measure	piece

Dimensions

Product Net Weight	0.82 kg
Product Net Depth / Length	51 mm
Product Net Height	147 mm
Product Net Width	187 mm
Gross Weight	1.3 kg
Package Level 1 Depth / Length	280 mm
Package Level 1 Height	120 mm
Package Level 1 Width	210 mm
Package Level 1 Units	1 carton

Technical

Screen Size	4:3 screen 5.7 in
Screen Color	64k colors
Screen Resolution	320 x 240 pixel
Communication Interface	2x Ethernet 100 MBit 1x RS232/422/485 2x USB 2.0 Host 1x SD card slot 2x Expansion slot
Memory Size User Data	128 MB
Memory Size User Program	256 MB
Memory Type User Data	Flash Disk
Security	Password protection with 8 user levels
Degree of Protection	acc. to IEC 60529 Front IP66 acc. to IEC 60529 Housing IP20
Ambient Air Temperature	Operation 0 ... +50 °C Storage -20 ... +70 °C

Additional Information

Product Main Type	CP630
Product Name	Control Panels

Classifications

eClass	27-33-02-01
EPLAN Catalog Tree	Electrical engineering / General / General
UNSPSC	32151703

Environmental

SCIP	6e63d2b2-83a5-4f6e-969e-6084fda13d6c Germany (DE)
WEEE B2C / B2B	Business To Business
WEEE Category	5. Small Equipment (No External Dimension More Than 50 cm)

PRODUCT-DETAILS

CP630-WEB

CP630-WEB Control Panel 5.7" microbr.f.V2.3 websv.



General Information

Extended Product Type	CP630-WEB
Product ID	1SAP530200R0001
ABB Type Designation	CP630-WEB
EAN	4016779864893
Catalog Description	CP630-WEB Control Panel 5.7" microbr.f.V2.3 websv.
Long Description	CP630-WEB Control Panel 5.7" TFT touch screen, 64 K colors, 320 x 240 pixel, microbrowser for V2.3 webserver

Ordering

Country of Origin	Italy (IT) Germany (DE)
CN8	85371091
Invoice Description	CP630-WEB Control Panel 5.7" microbr.f.V2.3 websv.
Made To Order	No
Minimum Order Quantity	1 piece
Order Multiple	1 piece
Selling Unit of Measure	piece

Dimensions

Product Net Weight	0.82 kg
Product Net Depth / Length	51 mm

Product Net Height	147 mm
Product Net Width	187 mm
Gross Weight	1.3 kg
Package Level 1 Depth / Length	280 mm
Package Level 1 Height	120 mm
Package Level 1 Width	210 mm
Package Level 1 Units	1 carton

Technical

Screen Size	4:3 screen 5.7 in
Screen Color	64k colors
Screen Resolution	320 x 240 pixel
Communication Interface	2x Ethernet 100 MBit · 1x RS232/422/485 · 2x USB 2.0 Host · 1x SD card slot · 2x Expansion slot
Memory Size User Data	128 MB
Memory Size User Program	256 MB
Memory Type User Data	Flash Disk
Security	Password protection with 8 user levels
Degree of Protection	acc. to IEC 60529 Front IP66 acc. to IEC 60529 Housing IP20
Ambient Air Temperature	Operation 0 ... +50 °C Storage -20 ... +70 °C

Additional Information

Product Main Type	CP630
Product Name	Control Panels

Classifications

eClass	27-33-02-01
EPLAN Catalog Tree	Electrical engineering / General / General
UNSPSC	32151703

Environmental

SCIP	03330a80-39a0-41d4-888e-187ee932304f Germany (DE)
WEEE B2C / B2B	Business To Business
WEEE Category	5. Small Equipment (No External Dimension More Than 50 cm)

PRODUCT-DETAILS

CP635

CP635 Control Panel 7" TFT touch screen



General Information

Extended Product Type	CP635
Product ID	1SAP535100R0001
ABB Type Designation	CP635
EAN	4016779864909
Catalog Description	CP635 Control Panel 7" TFT touch screen
Long Description	CP635 Control Panel 7" TFT touch screen, 64 K colors, 800 x 480 pixel, PB610 runtime license

Ordering

Country of Origin	Italy (IT) Germany (DE) Finland (FI)
CN8	85371091
Invoice Description	CP635 Control Panel 7" TFT touch screen
Made To Order	No
Minimum Order Quantity	1 piece
Order Multiple	1 piece
Selling Unit of Measure	piece

Dimensions

Product Net Weight	0.76 kg
Product Net Depth / Length	51 mm
Product Net Height	147 mm
Product Net Width	187 mm
Gross Weight	1.2 kg
Package Level 1 Depth / Length	280 mm
Package Level 1 Height	120 mm
Package Level 1 Width	210 mm
Package Level 1 Units	1 carton

Technical

Screen Size	16:9 wide screen 7 in
Screen Color	64k colors
Screen Resolution	800 x 480 pixel
Communication Interface	2x Ethernet 100 MBit 1x RS232/422/485 2x USB 2.0 Host 1x SD card slot 2x Expansion slot
Memory Size User Data	128 MB
Memory Size User Program	256 MB
Memory Type User Data	Flash Disk
Security	Password protection with 8 user levels
Degree of Protection	acc. to IEC 60529 Front IP66 acc. to IEC 60529 Housing IP20
Ambient Air Temperature	Operation 0 ... +50 °C Storage -20 ... +70 °C

Additional Information

Product Main Type	CP635
Product Name	Control Panels

Classifications

eClass	27-33-02-01
EPLAN Catalog Tree	Electrical engineering / General / General
UNSPSC	32151703

Environmental

SCIP	5b70c5e1-98a2-4f22-9ad2-d8445ecf8732 Germany (DE)
WEEE B2C / B2B	Business To Business
WEEE Category	5. Small Equipment (No External Dimension More Than 50 cm)

PRODUCT-DETAILS

CP435T

CP430 BP-ETH Control Panel 5.7" STN Touc



General Information

Extended Product Type	CP435T
Product ID	1SBP260193R1001
ABB Type Designation	CP435T
EAN	3471522601933
Catalog Description	CP430 BP-ETH Control Panel 5.7" STN Touc
Long Description	CP435 T Control Panel 1 menu 6 defined keys 7" TFT Touch screen 64K Colors

Additional Information

ABB Type Designation	CP435T
Ambient Air Temperature	Operation 0 ... +50 °C Storage -10 ... +60 °C
Battery Type	Portable
CN8	85371091
Communication	Depend on Driver
Communication Interface	no
Communication Speed	4.8 ... 187.5 kBd
Country of Origin	Taiwan, Province Of China (TW)
cUL Certificate	1SAA960000-1709
Customs Tariff Number	85371091
	1SBC159107L0202

Information	
Declaration of Conformity - CE	1SBD240516C1000
Display Type	TFT Touch + keys
EAN	3471522601933
eClass	27-33-02-01
Fieldbus Interface Type	Modbus RTUAC500_ModbusASCIlothers (contact us)
Frame Size	Undefined
Fuse Size	5 x 20_MMTx
Fuse Type	SLEEK.36ESr
Gross Weight	1.31 kg
Instructions and Manuals	1SBC159108M0201
Instructions and Manuals (Part 2)	1SBC159106M0202
Invoice Description	CP430 BP-ETH Control Panel 5.7" STN Touc
Made To Order	No
Memory Size User Data	512 kB
Memory Size User Program	8000 kB
Memory Type User Data	512 kilobyte RAM
Memory Type User Program	8 MB ROM
Minimum Order Quantity	1 piece
Mounting on DIN Rail	No
Mounting Position	0 to 135 °
Mounting Type	Front face
Number of Characters Per Line	100
Number of Display Lines	60
Number of Function Keys	6
Number of LEDs	0
Operating Mode	off-lineon-line
Order Multiple	1 piece
	20 V·A
Power Supply	24 V DC
Product Main Type	CP435
Product Name	Control Panel
Product Net Depth / Length	47 mm
Product Net Height	176 mm
Product Net Weight	0.86 kg
Product Net Width	231 mm
Product Type	PLC-CP400
Profibus	No
Programming Software	CP400 Soft
Quote Only	No
Real-time Clock	Yes
Release Type	V11.13.10
RoHS Information	1SBD340002R0202
Screen Color	64k colors
Screen Resolution	800 x 480 pixel
Screen Size	16:9 wide screen 7 in
Screen Type	TFT color, CCFL backlight, touch screen

Selling Unit of Measure	piece
Serial Port 1 Type	RS232/RS485
Serial Port 2 Type	RS232/RS422/RS485
Service Life	50000 hour
Short Description	CP435 T Control Panel 7" TFT Touch screen 64KCol
Short-Circuit Protective Devices	gG Type Fuses Integrated
Software Function	alarm managementrecipe managementtrendsmacro & laddersub-screen
Stocked At (Warehouses)	Menden, Germany
Supply Voltage	20.4 ... 27.6 V DC
UL Certificate	NRAQ.E240320
UNSPSC	32151703
USB Port 1 Type	2 Host Ver. 2.0
USB Port 2 Type	1 Device Ver. 2.0
Viewing Area Height	92.4 mm
Viewing Area Length	153.7 mm
WEEE B2C / B2B	Business To Business
WEEE Category	5. Small Equipment (No External Dimension More Than 50 cm)

PRODUCT-DETAILS

CP435T-ETH

CP435 T-ETH Control Panel 7" TFT Touch screen 64



General Information

Extended Product Type	CP435T-ETH
Product ID	1SBP260197R1001
ABB Type Designation	CP435T-ETH
EAN	3471522601971
Catalog Description	CP435 T-ETH Control Panel 7" TFT Touch screen 64
Long Description	CP435 T-ETH Control Panel 1 menu 6 defined keys 7" TFT Touch screen 64K Colors + Ethernet

Additional Information

ABB Type Designation	CP435T-ETH
Ambient Air Temperature	Operation 0 ... +50 °C Storage -10 ... +60 °C
Battery Type	Portable
CN8	85381000
Communication	Depend on Driver
Communication Interface	Ethernet
Communication Speed	4.8 ... 187.5 kBd
Country of Origin	Taiwan, Province Of China (TW)
cUL Certificate	1SAA960000-1709
Customs Tariff Number	85381000

Data Sheet, Technical Information	1SBC159107L0202
Declaration of Conformity - CE	1SBD240516C1000
EAN	3471522601971
Fieldbus Interface Type	Modbus RTUAC500_ModbusASCIlothers (contact us)
Frame Size	Undefined
Fuse Size	5 x 20_MMTx
Fuse Type	SLEEK.36ESr
Gross Weight	1.34 kg
Instructions and Manuals	1SBC159108M0201
Instructions and Manuals (Part 2)	1SBC159106M0202
Invoice Description	CP435 T-ETH Control Panel 7" TFT Touch screen 64
Made To Order	No
Memory Size User Data	512 kB
Memory Size User Program	8000 kB
Memory Type User Data	512 kilobyte RAM
Memory Type User Program	8 MB ROM
Minimum Order Quantity	1 piece
Mounting on DIN Rail	No
Mounting Position	0 to 135 °
Mounting Type	Front face
Number of Characters Per Line	100
Number of Display Lines	60
Number of Function Keys	6
Number of LEDs	0
Operating Mode	off-lineon-line
Order Multiple	1 piece
Power Supply	20 V·A
Power Supply	24 V DC
Product Main Type	CP435
Product Name	Control Panel
Product Net Depth / Length	47 mm
Product Net Height	176 mm
Product Net Weight	0.86 kg
Product Net Width	231 mm
Product Type	PLC-CP400
Profibus	No
Programming Software	CP400 Soft
Quote Only	No
Real-time Clock	Yes
Release Type	V11.13.10
RoHS Information	1SBD340002R0202
Screen Color	64k colors
Screen Resolution	800 x 480 pixel
Screen Size	16:9 wide screen 7 in
Screen Type	TFT color, CCFL backlight, touch screen
Security	password protection with 9 user levels
Selling Unit of Measure	piece

Serial Port 1 Type	RS232/RS485
Serial Port 2 Type	RS232/RS422/RS485
Service Life	50000 hour
Short Description	CP435 T-ETH Control Panel 7" TFT Touch screen 64
Short-Circuit Protective Devices	gG Type Fuses Integrated
Software Function	alarm managementrecipe managementtrendsmacro & laddersub-screen
Stocked At (Warehouses)	Menden, Germany
Supply Voltage	20.4 ... 27.6 V DC
UL Certificate	NRAQ.E240320
USB Port 1 Type	2 Host Ver. 2.0
USB Port 2 Type	1 Device Ver. 2.0
Viewing Area Height	92.4 mm
Viewing Area Length	153.7 mm
WEEE B2C / B2B	Business To Business
WEEE Category	5. Small Equipment (No External Dimension More Than 50 cm)

PRODUCT-DETAILS

CP440C-ETH

CP440C-ETH:CP400, control panel 1 menu + 6 defineable keys 7.5" STN touchscreen 64K colors



General Information

Extended Product Type	CP440C-ETH
Product ID	1SBP260187R1001
ABB Type Designation	CP440C-ETH
EAN	3471522601872
Catalog Description	CP440C-ETH:CP400, control panel 1 menu + 6 defineable keys 7.5" STN touchscreen 64K colors
Long Description	CP440 C-ETH Control Panel 1 menu 6 defined keys 7.5" STN Touch screen 64K Colors

Additional Information

ABB Type Designation	CP440C-ETH
Ambient Air Temperature	Operation 0 ... +50 °C Storage -10 ... +60 °C
Battery Type	Portable
Communication	Depend on Driver
Communication Interface	Ethernet
Communication Speed	4.8 ... 187.5 kBd
Country of Origin	Taiwan, Province Of China (TW)
cUL Certificate	1SAA960000-1709
Customs Tariff Number	85381000
Data Sheet, Technical Information	1SBC159107L0202

Declaration of Conformity - CE	1SBD240578C1000
Display Type	STN Touch + keys
EAN	3471522601872
Environmental Information	1SBD240187E1000
Fieldbus Interface Type	Modbus RTUAC500_ModbusASCIlothers (contact us)
Frame Size	Undefined
Fuse Size	3.6 x 10_MMTx
Fuse Type	SLEEK.36ESr
Gross Weight	2.36 kg
GSD-file for PROFIBUS Communication	No
Instructions and Manuals	1SBC159104M0201
Instructions and Manuals (Part 2)	1SBC159106M0202
Invoice Description	CP440C-ETH:CP400, control panel 1 menu + 6 defineable keys 7.5" STN touchscreen 64K colors
Made To Order	No
Memory Size User Data	512 kB
Memory Size User Program	8000 kB
Memory Type User Data	512 kilobyte RAM
Memory Type User Program	8 MB ROM
Minimum Order Quantity	1 piece
Mounting on DIN Rail	No
Mounting Position	0 to 135 °
Mounting Type	Front face
Number of Characters Per Line	80
Number of Display Lines	60
Number of Function Keys	6
Number of LEDs	0
Operating Mode	off-lineon-line
Order Multiple	1 piece
	24 V·A
Power Supply	24 V DC
Product Main Type	CP440
Product Name	Control Panel
Product Net Weight	1.2 kg
Product Type	PLC-CP400
Profibus	No
Programming Software	CP400 Soft
Quote Only	No
Real-time Clock	Yes
Release Type	V10.10.10
RoHS Information	1SBD340002R0202
Screen Color	64k colors
Screen Resolution	640 x 480 in
Screen Size	4:3 screen 7.5 in
Screen Type	TFT color, CCFL backlight, touch screen
Security	password protection with 9 user levels
Selling Unit of Measure	piece
Serial Port 1 Type	RS232/RS485

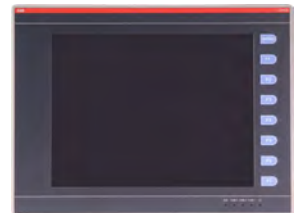
Serial Port 2 Type	RS232/RS422/RS485
Serial Port 3 Type	RS232RS485
Service Life	45000 hour
Short Description	CP440 C-ETH Control Panel 7.5" STN Touch screen
Short-Circuit Protective Devices	gG Type Fuses Integrated
Software Function	alarm managementrecipe managementtrendsmacro & laddersub-screen
Stocked At (Warehouses)	Menden, Germany
Supply Voltage	20.4 ... 27.6 V DC
UL Certificate	NRAQ.E240320
USB Port 1 Type	2 Host Ver. 2.0
USB Port 2 Type	1 Device Ver. 2.0
Viewing Area Height	115.8 mm
Viewing Area Length	153.7 mm

PRODUCT-DETAILS

CP450T

CP450 T Control Panel 10.4" TFT Touch

SC



General Information

Extended Product Type	CP450T
Product ID	1SBP260188R1001
ABB Type Designation	CP450T
EAN	3471522601889
Catalog Description	CP450 T Control Panel 10.4" TFT Touch sc
Long Description	CP450 T Control Panel 1 menu 7 defined keys 10.4" TFT Touch screen 64K Colors

Additional

ABB Type Designation	CP450T
Ambient Air Temperature	Operation 0 ... +50 °C Storage -10 ... +60 °C
Battery Type	Portable
CN8	85371091
Communication	Depend on Driver
Communication Interface	no
Communication Speed	4.8 ... 187.5 kBd
Country of Origin	Taiwan, Province Of China (TW)
cUL Certificate	1SAA960000-1709
Customs Tariff Number	85371091
	1SBC159107L0202

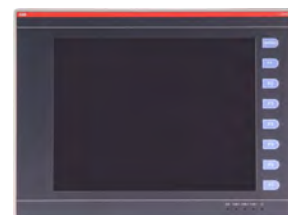
Information	
Declaration of Conformity - CE	1SBD240578C1000
Display Type	TFT Touch + keys
EAN	3471522601889
eClass	27-33-02-01
Environmental Information	1SBD240188E1000
Fieldbus Interface Type	Modbus RTUAC500_ModbusASCIIothers (contact us)
Frame Size	Undefined
Fuse Size	3.6 x 10_MMTx
Fuse Type	SLEEK.36ESr
Gross Weight	3.12 kg
GSD-file for PROFIBUS Communication	No
Instructions and Manuals	1SBC159105M0201
Instructions and Manuals (Part 2)	1SBC159106M0202
Invoice Description	CP450 T Control Panel 10.4" TFT Touch sc
Made To Order	No
Memory Size User Data	512 kB
Memory Size User Program	8000 kB
Memory Type User Data	512 kilobyte RAM
Memory Type User Program	8 MB ROM
Minimum Order Quantity	1 piece
Mounting on DIN Rail	No
Mounting Position	0 to 135 °
Mounting Type	Front face
Number of Characters Per Line	80
Number of Display Lines	60
Number of Function Keys	7
Number of LEDs	0
Operating Mode	off-lineon-line
Order Multiple	1 piece
Power Supply	30 V·A
Power Supply	24 V DC
Product Main Type	CP450
Product Name	Control Panel
Product Net Depth / Length	52 mm
Product Net Height	222 mm
Product Net Weight	1.9 kg
Product Net Width	297 mm
Product Type	PLC-CP400
Profibus	No
Programming Software	CP400 Soft
Quote Only	No
Real-time Clock	Yes
Release Type	V10.10.10
RoHS Information	1SBD340002R0202
Screen Color	64k colors
Screen Resolution	640 x 480 pixel

Screen Size	4:3 screen 10.4 in
Screen Type	TFT color, CCFL backlight, touch screen
Security	password protection with 9 user levels
Selling Unit of Measure	piece
Serial Port 1 Type	RS232/RS485
Serial Port 2 Type	RS232/RS422/RS485
Serial Port 3 Type	RS232RS485
Service Life	50000 hour
Short Description	CP450 T Control Panel 10.4" TFT Touch screen 256
Short-Circuit Protective Devices	gG Type Fuses Integrated
Software Function	alarm managementrecipe managementtrendsmacro & laddersub-screen
Stocked At (Warehouses)	Menden, Germany
Supply Voltage	20.4 ... 27.6 V DC
UL Certificate	NRAQ.E240320
UNSPSC	32151703
USB Port 1 Type	2 Host Ver. 2.0
USB Port 2 Type	1 Device Ver. 2.0
Viewing Area Height	160.4 mm
Viewing Area Length	213.2 mm
WEEE B2C / B2B	Business To Business
WEEE Category	5. Small Equipment (No External Dimension More Than 50 cm)

PRODUCT-DETAILS

CP450T-ETH

CP450 T-ETH Control Panel 10.4" TFT Touc



General Information

Extended Product Type	CP450T-ETH
Product ID	1SBP260189R1001
ABB Type Designation	CP450T-ETH
EAN	3471522601896
Catalog Description	CP450 T-ETH Control Panel 10.4" TFT Touc
Long Description	CP450 T-ETH Control Panel 1 menu 7 defined keys 10.4" TFT Touch screen 64K Colors + Ethernet

Additional Information

ABB Type Designation	CP450T-ETH
Ambient Air Temperature	Operation 0 ... +50 °C Storage -10 ... +60 °C
Battery Type	Portable
CN8	85381000
Communication	Depend on Driver
Communication Interface	Ethernet
Communication Speed	4.8 ... 187.5 kBd
Country of Origin	Taiwan, Province Of China (TW)
cUL Certificate	1SAA960000-1709
Customs Tariff Number	85381000

Data Sheet, Technical Information	1SBC159107L0202
Declaration of Conformity - CE	1SBD240578C1000
Display Type	TFT Touch + keys
EAN	3471522601896
Environmental Information	1SBD240189E1000
Fieldbus Interface Type	Modbus RTUAC500_ModbusASCIIothers (contact us)
Frame Size	Undefined
Fuse Size	3.6 x 10_MMTx
Fuse Type	SLEEK.36ESr
Gross Weight	3.12 kg
GSD-file for PROFIBUS Communication	No
Instructions and Manuals	1SBC159105M0201
Instructions and Manuals (Part 2)	1SBC159106M0202
Invoice Description	CP450 T-ETH Control Panel 10.4" TFT Touc
Made To Order	No
Memory Size User Data	512 kB
Memory Size User Program	8000 kB
Memory Type User Data	512 kilobyte RAM
Memory Type User Program	8 MB ROM
Minimum Order Quantity	1 piece
Mounting on DIN Rail	No
Mounting Position	0 to 135 °
Mounting Type	Front face
Number of Characters Per Line	80
Number of Display Lines	60
Number of Function Keys	7
Number of LEDs	0
Operating Mode	off-lineon-line
Order Multiple	1 piece
	30 V·A
Power Supply	24 V DC
Product Main Type	CP450
Product Name	Control Panel
Product Net Depth / Length	52 mm
Product Net Height	222 mm
Product Net Weight	1.9 kg
Product Net Width	297 mm
Product Type	PLC-CP400
Profibus	No
Programming Software	CP400 Soft
Quote Only	No
Real-time Clock	Yes
Release Type	V10.10.10
RoHS Information	1SBD340002R0202
Screen Color	64k colors
Screen Resolution	640 x 480 pixel

Screen Size	4:3 screen 10.4 in
Screen Type	TFT color, CCFL backlight, touch screen
Security	password protection with 9 user levels
Selling Unit of Measure	piece
Serial Port 1 Type	RS232/RS485
Serial Port 2 Type	RS232/RS422/RS485
Serial Port 3 Type	RS232RS485
Service Life	50000 hour
Short Description	CP450 T-ETH Control Panel 10.4" TFT Touch screen
Short-Circuit Protective Devices	gG Type Fuses Integrated
Software Function	alarm managementrecipe managementtrendsmacro & laddersub-screen
Supply Voltage	20.4 ... 27.6 V DC
UL Certificate	NRAQ.E240320
USB Port 1 Type	2 Host Ver. 2.0
USB Port 2 Type	1 Device Ver. 2.0
Viewing Area Height	160.4 mm
Viewing Area Length	213.2 mm
WEEE B2C / B2B	Business To Business
WEEE Category	5. Small Equipment (No External Dimension More Than 50 cm)

PRODUCT-DETAILS

CP501

CP501 Control Panel, CP500soft needed



General Information

Extended Product Type	CP501
Product ID	1SBP260170R1001
ABB Type Designation	CP501
Catalog Description	CP501 Control Panel, CP500soft needed
Long Description	Control Panel 4 programmable function KeysLCD text display 2 line 16 Characters

Additional Information

ABB Type Designation	CP501
Ambient Air Temperature	Operation 0 ... +50 °C Storage -20 ... +70 °C
Battery Type	Portable
Character Height	5 mm
CN8	84716070
Communication	Depend on Driver
Communication Interface	no
Communication Speed	4.8 ... 187.5 kBd
Country of Origin	Germany (DE)
CSA Certificate	NRAG7.E224886
Customs Tariff Number	84716070
Data Sheet, Technical Information	1SBC159001M6501
Declaration of Conformity - CE	1SBD240563C1000
Degree of Protection	IP65

Display Type	STN Text
Environmental Information	1SBD240170E1000
Fieldbus Interface Type	Modbus RTUAC500 ModbusASCIIothers (contact us)
Frame Size	Undefined
Gross Weight	0.3 kg
GSD-file for PROFIBUS Communication	No
Instructions and Manuals	1SBC159002M0202
Invoice Description	CP501 Control Panel, CP500soft needed
LR Certificate	LRS_0620036
Made To Order	No
Memory Size	16 kB
Memory Size User Data	16 kB
Memory Size User Program	16 kB
Memory Type User Data	16 kilobyte non-volatile RAM
Memory Type User Program	16 KB Flash EPROM
Minimum Order Quantity	1 piece
Mounting on DIN Rail	No
Mounting Type	Front face
Number of Characters Per Line	16
Number of Display Lines	2
Number of Function Keys	4
Number of LEDs	0
Operating Mode	no
Order Multiple	1 piece
	4.8 V·A
Power Supply	24 V DC
Product Depth	37.5 mm
Product Main Type	CP501
Product Name	Control Panel
Product Net Depth / Length	28 mm
Product Net Height	69 mm
Product Net Weight	0.2 kg
Product Net Width	104 mm
Product Type	PLC-CP500
Profibus	No
Programming Software	CP500 Soft
Quote Only	No
Real-time Clock	No
Release Type	V1.02
Screen Color	LCD with backlight
Screen Size	2.5 in
Screen Type	STN Text
Security	password protection with 8 user levels
Selling Unit of Measure	piece
Serial Port 1 Type	PR,MODBUS,ASCII,others
Serial Port 2 Type	PR,MODBUS,ASCII,others
Service Life	40000 hour
Short Description	Control Panel 4 function Keys LCD text display 2
Short-Circuit Protective Devices	gG Type Fuses Integrated
Stocked At (Warehouses)	Menden, Germany
Supply Voltage	18 ... 32 V DC
UL Certificate	NRAG.E224886
USB Port 1 Type	no
USB Port 2 Type	no
WEEE B2C / B2B	Business To Business
WEEE Category	5. Small Equipment (No External Dimension More Than 50 cm)

PRODUCT-DETAILS

CP502

CP502 Control Panel, CP500soft needed



General Information

Extended Product Type	CP502
Product ID	1SBP260171R1001
ABB Type Designation	CP502
Catalog Description	CP502 Control Panel, CP500soft needed
Long Description	Control Panel 3 programmable + 8 function Keys LCD text display 2 line 20 Characters

Additional Information

ABB Type Designation	CP502
Ambient Air Temperature	Operation 0 ... +50 °C Storage -20 ... +70 °C
Battery Type	Portable
Character Height	5.55 mm
CN8	84716070
Communication	Depend on Driver
Communication Interface	no
Communication Speed	9.6 ... 57.6 kBd
Country of Origin	Sweden (SE)
CSA Certificate	NRAG7.E224886
Customs Tariff Number	84716070 1SBC159001M6501

Declaration of Conformity - CE	1SBD240563C1000
Degree of Protection	IP65
Display Type	STN Text
Environmental Information	1SBD240171E1000
Fieldbus Interface Type	Modbus RTUAC500_ModbusASCIIothers (contact us)
Frame Size	Undefined
Fuse Size	5 x 20_MMTx
Fuse Type	800 mA
Gross Weight	0.5 kg
GSD-file for PROFIBUS Communication	No
Instructions and Manuals	1SBC159002M0202
Invoice Description	CP502 Control Panel, CP500soft needed
LR Certificate	LRS_0620036
Made To Order	No
Memory Size	64 kB
Memory Size User Data	64 kB
Memory Size User Program	64 kB
Memory Type User Data	64 kilobyte non-volatile RAM
Memory Type User Program	64 KB Flash EPROM
Minimum Order Quantity	1 piece
Mounting on DIN Rail	No
Mounting Type	Front face
Number of Characters Per Line	20
Number of Display Lines	2
Number of Function Keys	1 1
Number of LEDs	0
Operating Mode	no
Order Multiple	1 piece
Power Supply	3.6 V·A 24 V DC
Product Depth	46.5 mm
Product Main Type	CP502
Product Name	Control Panel
Product Net Depth / Length	29 mm
Product Net Height	100 mm
Product Net Weight	0.37 kg
Product Net Width	142 mm
Product Type	PLC-CP500
Profibus	No
Programming Software	CP500 Soft
Quote Only	No
Real-time Clock	Yes
Release Type	V1.02
Screen Color	LCD with backlight
Screen Size	2.8 in
Screen Type	STN Text
Security	password protection with 8 user levels
Selling Unit of Measure	piece
Serial Port 1 Type	PR,MODBUS,ASCII,others

Serial Port 2 Type	PR,MODBUS,ASCII,others
Service Life	50000 hour
Short Description	Control Panel 3+8 function Keys LCD text display
Short-Circuit Protective Devices	gG Type Fuses Integrated
Software Function	recipe management
Stocked At (Warehouses)	Menden, Germany Wickliffe, Ohio, United States New Berlin,Wisconsin, United States
Supply Voltage	20 ... 30 V DC
UL Certificate	NRAG.E224886
USB Port 1 Type	no
USB Port 2 Type	no
WEEE B2C / B2B	Business To Business
WEEE Category	5. Small Equipment (No External Dimension More Than 50 cm)

PRODUCT-DETAILS

CP511

CP511 Control Panel, CP500soft needed



General Information

Extended Product Type	CP511
Product ID	1SBP260173R1001
ABB Type Designation	CP511
Catalog Description	CP511 Control Panel, CP500soft needed
Long Description	Control Panel 8 programmable + 10 function Keys LCD Graphics & text display 5.2"

Additional Information

ABB Type Designation	CP511
Ambient Air Temperature	Operation 0 ... +50 °C Storage -20 ... +70 °C
Battery Type	Portable
CN8	84716070
Communication	Depend on Driver
Communication Interface	Ethernet with IFC ETPP
Communication Speed	9.6 ... 57.6 kBd
Country of Origin	Sweden (SE)
CSA Certificate	NRAG7.E224886
Customs Tariff Number	84716070
Data Sheet, Technical Information	1SBC159001M6501 1SBD240564C1000

Conformity - CE

Degree of Protection	IP65
Display Type	STN Graphic and text
Environmental Information	1SBD240173E1000
Fieldbus Interface Type	Modbus RTUAC500_ModbusASCIIProfibus DP Slave (option)Modbus TCP_IPOthers (contact us)
Frame Size	Undefined
Fuse Size	5 x 20_MMTx
Fuse Type	800 mAAT
Gross Weight	1.6 kg
GSD-file for PROFIBUS Communication	CP500_IFC-PBDP.gsd
Instructions and Manuals	1SBC159002M0202
Invoice Description	CP511 Control Panel, CP500soft needed
LR Certificate	LRS_0620036
Made To Order	No
Memory Size	400 kB
Memory Size User Data	400 kB
Memory Size User Program	400 kB
Memory Type User Data	400 kilobyte non-volatile RAM
Memory Type User Program	400 KB Flash EPROM
Minimum Order Quantity	1 piece
Mounting on DIN Rail	No
Mounting Type	Front face
Number of Characters Per Line	740
Number of Display Lines	48
Number of Function Keys	18
Number of LEDs	16
Operating Mode	no
Order Multiple	1 piece
Power Supply	10.8 V·A 24 V DC
Product Depth	75 mm
Product Main Type	CP511
Product Name	Control Panel
Product Net Depth / Length	69 mm
Product Net Height	198 mm
Product Net Weight	1.5 kg
Product Net Width	211 mm
Product Type	PLC-CP500
Profibus	With IFC PBDP
Programming Software	CP500 Soft
Quote Only	No
Real-time Clock	Yes
Release Type	V1.02
Screen Color	LCD B&W with backlight
Screen Resolution	64 pixel
Screen Size	5.2 in
Screen Type	STN Graphic and text
Security	password protection with 8 user levels
Selling Unit of Measure	piece

Serial Port 1 Type	PR,MODBUS,ASCII,others
Serial Port 2 Type	PR,MODBUS,ASCII,others
Service Life	50000 hour
Short Description	Control Panel 8+10 function Keys LCD Graphics &
Short-Circuit Protective Devices	gG Type Fuses Integrated
Software Function	alarm managementrecipe managementtrends
Stocked At (Warehouses)	Menden, Germany
Supply Voltage	20 ... 30 V DC
UL Certificate	NRAG.E224886
USB Port 1 Type	no
USB Port 2 Type	no
Viewing Area Height	33.9 mm
Viewing Area Length	127.2 mm
WEEE B2C / B2B	Business To Business
WEEE Category	5. Small Equipment (No External Dimension More Than 50 cm)

PRODUCT-DETAILS

CP513

CP513 Control Panel, CP500soft needed



General Information

Extended Product Type	CP513
Product ID	1SBP260175R1001
ABB Type Designation	CP513
Catalog Description	CP513 Control Panel, CP500soft needed
Long Description	Control Panel 16 programmable + 10 function Keys 256 colors TFT Graphics & text display 5.7"

Additional Information

ABB Type Designation	CP513
Ambient Air Temperature	Operation 0 ... +50 °C Storage -20 ... +70 °C
Battery Type	Portable
CN8	84716070
Communication	Depend on Driver
Communication Interface	Ethernet with IFC ETTP
Communication Speed	9.6 ... 57.6 kBd
Country of Origin	France (FR)
CSA Certificate	NRAG7.E224886
Customs Tariff Number	85389099
Data Sheet, Technical Information	1SBC159001M6501
Declaration of Conformity - CE	1SBD240565C1000
Degree of Protection	IP65

Öä äÄ^ ^	VÖVÖ: ä äÄ^ äÄ^ cc
Ö: cä } { ^ } äÄ^ f { äÄ^ }	FÜÖÖG EFÍ Í ÖFEÉE
Ö: ää^ • ÄQ: - äÄ^ Ä^] ^	T [ää^ • ÄVWÖDÍ €€ T [ää^ • ÖYÖW: - ä^ • ÄÜÄ äÄ^ Ä^] } } D [ää^ • ÄVÖU: W Ö: - äÄ^] } äÄ^ • D
Ö: ä^ ÄÜä^	W ä^ ä^ ä^ ä^
Ö: • ÄÜä^	Í Ä^ ÖE T T Vö
Ö: • Ä^] ^	Í €€Ä ÖV
Ö: • • Ä^ ^ ä @	FÈ Ä^
Ö: ÜÖEä^ Ä^ ÄÜÜÖWÜÄ	ÖÚÍ €€ WÖEÜÖÜE • ä
Ö: { { } } äÄ^ }	
Ö: d^ & ä^ } • äÄ^ äÄ^ ä^ ä^	FÜÖÖFÍ JEEGT €€EG
Ö: c äÄ^ Ä^ • äÄ^ ä^ }	ÖÚÍ FHÖ } d ÄÜä^ Ä^ EÖÜÍ €€ - ä^ ä^ ä^ ä^
T äÄ^ Ä^ ÄÜä^	B
T ^ { : ÄÜä^	I €€Ä Ö
T ^ { : ÄÜä^ Ä^ Ä^ Ä^ Ä^	I €€Ä Ö
T ^ { : ÄÜä^ Ä^ Ä^ Ä^	I €€Ä Ö
Ü: * äÄ^	
T ^ { : Ä^] ^ Ä^ Ä^ Ä^ Ä^	I €€Ä ä ä^ Ä^ } E äÄ^ ÄÜÖ
T ^ { : Ä^] ^ Ä^ Ä^ Ä^	I €€Ä ÖÄ: ä @ ÖÜÜUT
Ü: * äÄ^	
T ä ä { ÄÜä^ Ä^ Ä^ ä ä	FÄ ä ä
T } } ä^ Ä^ } Ä^ Ö ÄÜä	B
T } } ä^ Ä^] ^	Ö } Ö ä
B { ä^ Ä^ Ä^ Ö ä ä ä • ÄÜä^ Ä^	FÉ I
S ä^	
B { ä^ Ä^ Ä^ Ö ä } äÄ^ ä^	FEG
B { ä^ Ä^ Ä^ Ö } & ä^ } äÄ^	G
B { ä^ Ä^ Ä^ Ö Ö	FÍ
U Ä^ äÄ^ * Ä^ ä^	}
U: ä^ Ä^ Ä^ äÄ^	FÄ ä ä
	FHEGK OE
Ü: Ä^ Ä^	G Ä^ Ä^ Ö
Ü: ä^ & Ö^] @	JHEG {
Ü: ä^ & Ö^ äÄ^ Ä^] ^	ÖÚÍ FH
Ü: ä^ & Ö^ äÄ^ ^	Ö } d ÄÜä^ Ä^
Ü: ä^ & Ö^ Ä^ Ö^] @	Í JÄ {
Ü: ä^ & Ö^ Ä^ Ö^ Ä^ @	FJ Ä {
Ü: ä^ & Ö^ Ä^ Ö^ Ä^ @	FÈ Ä^
Ü: ä^ & Ö^ Ä^ Ö^ ä @	G Í Ä {
Ü: ä^ & Ö^ Ä^] ^	ÜSÖEÜÍ €€
Ü: - ä^ •	Y ä ä WÖÜÖÜ
Ü: * äÄ^ { ä^ Ä^ - c äÄ^	ÖÚÍ €€Ä - c
Ü: { Ä^ }	B
Ü: äÄ^ Ä^ Ä^ &	Y^ •
Ü: Ä^ äÄ^ Ä^] ^	XFEEG
Ü: Ä^ Ä^ Ä^	G Í Ä •
Ü: Ä^ Ä^ Ä^ • } }	G €Ä ä^
Ü: Ä^ Ä^ ÄÜä^	Í È ä
Ü: Ä^ Ä^ Ä^] ^	VÖVÖ: ä äÄ^ äÄ^ cc
Ü: Ä^ äÄ^] äÄ^ • [äÄ^ { & äÄ^ } Ä^ äÄ^ Ä^ Ä^ Ä^ Ä^
Ü: ä^ Ä^ Ä^ Ä^ Ä^ Ä^] ^] äÄ^
Ü: äÄ^ Ä^ : c Ä^] ^	ÜÜÈ ÜÖÖÜÈ ÜÖÖÈ Ö: •
Ü: äÄ^ Ä^ : c Ä^] ^	ÜÜÈ ÜÖÖÜÈ ÜÖÖÈ Ö: •
Ü: c äÄ^ Ä^ Ä^	I €€€Ä @ ~
Ü: : c Ö^ • & ä^ ä^ }	Ö } d ÄÜä^ Ä^ Ä^ ÉFÉÄ^ } & ä^ } äÄ^ • ÄG Í Ä : Ä^ ÖV
Ü: : c Ö^ äÄ^ äÄ^ { & äÄ^ Ä^	* ÖÄ^] Ä^ • • Ä^ • * äÄ^ ä
Ö: c äÄ^	
Ü: - c äÄ^ } & ä^ }	äÄ^ { Ä^ äÄ^ Ä^] d^ äÄ^ Ä^ äÄ^ Ä^] cÄ^ ä^
Ü: & Ä^ äÄ^ Ä^ äÄ^ @ ~ • • D	T ^ } ä^ } EÖÄ: } ä^
Ü: Ä^ äÄ^ ^	G E Ä Ä Ä Ä Ä Ö
VÖVÖ: ä äÄ^	B Ü Ö E G ä

USB Port 1 Type	no
USB Port 2 Type	no
Viewing Area Height	86.4 mm
Viewing Area Length	115.2 mm
WEEE B2C / B2B	Business To Business
WEEE Category	5. Small Equipment (No External Dimension More Than 50 cm)

PRODUCT-DETAILS

CP555

CP555 Control Panel, CP500soft needed



General Information

Extended Product Type	CP555
Product ID	1SBP260179R1001
ABB Type Designation	CP555
Catalog Description	CP555 Control Panel, CP500soft needed
Long Description	Control Panel Touch screen 256 Colors TFT Graphics & text 10.4" 640x480 Pixels

Additional Information

ABB Type Designation	CP555
Ambient Air Temperature	Operation 0 ... +50 °C Storage -20 ... +70 °C
Battery Type	Portable
CN8	84716070
Communication	Depend on Driver
Communication Interface	Ethernet with IFC ETTP
Communication Speed	9.6 ... 57.6 kBd
Country of Origin	France (FR)
Customs Tariff Number	84716070
Data Sheet, Technical Information	1SBC159001M6501
Declaration of Conformity - CE	1SBD240567C1000

Degree of Protection	IP65
Display Type	TFT touch
Environmental Information	1SBD240179E1000
Fieldbus Interface Type	Modbus RTUAC500_ModbusASCIIProfibus DP Slave (option)Modbus TCP_IPOthers (contact us)
Frame Size	Undefined
Fuse Size	F6.3A
Fuse Type	F6.3A
Gross Weight	3.1 kg
GSD-file for PROFIBUS Communication	CP500_IFC-PBDP.gsd
Instructions and Manuals	1SBC159002M0202
Invoice Description	CP555 Control Panel, CP500soft needed
Made To Order	No
Memory Size	1600 kB
Memory Size User Data	1600 kB
Memory Size User Program	1600 kB
Memory Type User Data	1600 kilobyte non-volatile RAM
Memory Type User Program	1600 KB Flash EPROM
Minimum Order Quantity	1 piece
Mounting on DIN Rail	No
Mounting Type	Front face
Number of Characters Per Line	20128
Number of Display Lines	18120
Operating Mode	no
Order Multiple	1 piece
	24 V·A
Power Supply	24 V DC
Product Depth	114 mm
Product Main Type	CP555
Product Name	Control Panel
Product Net Depth / Length	105 mm
Product Net Height	250 mm
Product Net Weight	3 kg
Product Net Width	290 mm
Product Type	PLC-CP500
Profibus	With IFC PBDP
Programming Software	CP500 Soft
Quote Only	No
Real-time Clock	Yes
Release Type	V1.02
Screen Color	256 colors
Screen Resolution	480 pixel
Screen Size	10.4 in
Screen Type	TFT touch
Security	password protection with 8 user levels
Selling Unit of Measure	piece
Serial Port 1 Type	PR,MODBUS,ASCII,others
Serial Port 2 Type	PR,MODBUS,ASCII,others
Service Life	50000 hour
Short Description	Control Panel Touch screen 256 Colors TFT Graphi

Short-Circuit Protective4
Devices

gG Type Fuses Integrated

Software Function	alarm managementrecipe managementtrends
Stocked At (Warehouses)	Menden, Germany
Supply Voltage	20 ... 30 V DC
UL Certificate	NRAG.E224886
USB Port 1 Type	no
USB Port 2 Type	no
Viewing Area Height	158.4 mm
Viewing Area Length	211.2 mm
WEEE B2C / B2B	Business To Business
WEEE Category	5. Small Equipment (No External Dimension More Than 50 cm)

PRODUCT-DETAILS

CP410M

CP410:CP400, control panel 16 function keys 3"
LCD graphic monochrome display



General Information

Extended Product Type	CP410M
Product ID	1SBP260181R1001
ABB Type Designation	CP410M
EAN	3471522601810
Catalog Description	CP410:CP400, control panel 16 function keys 3" LCD graphic monochrome display
Long Description	CP410 Control Panel 16 function keys 3" LCD Graphic Monochrome

Additional Information

ABB Type Designation	CP410M
Ambient Air Temperature	Operation 0 ... +50 °C Storage -10 ... +60 °C
Battery Type	Portable
Communication	Depend on Driver
Communication Interface	no
Communication Speed	4.8 ... 187.5 kBd
Country of Origin	Taiwan, Province Of China (TW)
cUL Certificate	1SAA960000-1709
Customs Tariff Number	85381000

Data Sheet, Technical Information	1SBC159107L0202
Declaration of Conformity - CE	1SBD240576C1000
Display Type	STN Graphic and text
EAN	3471522601810
Environmental Information	1SBD240181E1000
Fieldbus Interface Type	Modbus RTUAC500_ModbusASCIlothers (contact us)
Frame Size	Undefined
Fuse Size	5 x 20_MMTx
Fuse Type	BEL.5TT 1-R
Gross Weight	0.73 kg
GSD-file for PROFIBUS Communication	No
Instructions and Manuals	1SBC159101M0201
Instructions and Manuals (Part 2)	1SBC159106M0202
Invoice Description	CP410:CP400, control panel 16 function keys 3" LCD graphic monochrome display
Made To Order	No
Memory Size User Program	4000 kB
Memory Type User Program	4 MB ROM
Minimum Order Quantity	1 piece
Mounting on DIN Rail	No
Mounting Position	0 to 135 °
Mounting Type	Front face
Number of Characters Per Line	20
Number of Display Lines	10
Number of Function Keys	16
Number of LEDs	0
Operating Mode	off-lineon-line
Order Multiple	1 piece
Power Supply	8 V·A 24 V DC
Product Main Type	CP410
Product Name	Control Panel
Product Net Weight	0.65 kg
Product Type	PLC-CP400
Profibus	No
Programming Software	CP400 Soft
Quote Only	No
Real-time Clock	Yes
Release Type	V10.10.10
RoHS Information	1SBD340002R0202
Screen Color	16 grey levels
Screen Resolution	160 x 80 pixel

Screen Size	2:1 wide screen 3 in
Screen Type	LCD-STN grey, LED backlight
Security	password protection with 9 user levels
Selling Unit of Measure	piece
Serial Port 2 Type	RS232/RS422/RS485
Service Life	75000 hour
Short Description	CP410 Control Panel Key 3" Graphic Monochrome
Short-Circuit Protective Devices	gG Type Fuses Integrated
Software Function	macro & ladder
Stocked At (Warehouses)	Menden, Germany
Supply Voltage	20.4 ... 27.6 V DC
UL Certificate	NRAQ.E240320
USB Port 1 Type	no
USB Port 2 Type	no
Viewing Area Height	35 mm
Viewing Area Length	65 mm

PRODUCT-DETAILS

CP415M

CP415M Control Panel



General Information

Extended Product Type	CP415M
Product ID	1SBP260191R1001
ABB Type Designation	CP415M
EAN	3471522601919
Catalog Description	CP415M Control Panel
Long Description	CP415 M Control Panel 3.5" STN Touch screen 16 grey levels

Additional Information

ABB Type Designation	CP415M
Ambient Air Temperature	Operation 0 ... +50 °C Storage -10 ... +60 °C
Battery Type	Portable
CN8	85371091
Communication	Depend on Driver
Communication Interface	no
Communication Speed	4.8 ... 187.5 kBd
Country of Origin	Taiwan, Province Of China (TW)
cUL Certificate	1SAA960000-1709
Customs Tariff Number	85371091 1SBC159107L0202

Information	
Declaration of Conformity - CE	1SBD240514C1000
Display Type	STN Touch
EAN	3471522601919
eClass	27-33-02-01
Environmental Information	1SBD240191E1000
Fieldbus Interface Type	Modbus RTUAC500_ModbusASCIlothers (contact us)
Frame Size	Undefined
Fuse Size	5 x 20_MMTx
Fuse Type	BEL.5TT 1-R
Gross Weight	2 kg
Instructions and Manuals	1SBC159107M0201
Instructions and Manuals (Part 2)	1SBC159106M0202
Invoice Description	CP415M Control Panel
Made To Order	No
Memory Size User Program	4000 kB
Memory Type User Program	4 MB ROM
Minimum Order Quantity	1 piece
Mounting on DIN Rail	No
Mounting Position	0 to 135 °
Mounting Type	Front face
Number of Characters Per Line	40
Number of Display Lines	30
Number of Function Keys	5
Number of LEDs	0
Operating Mode	off-lineon-line
Order Multiple	1 piece
	20 V·A
Power Supply	24 V DC
Product Main Type	CP415
Product Name	Control Panel
Product Net Depth / Length	41 mm
Product Net Height	96 mm
Product Net Weight	0.21 kg
Product Net Width	96 mm
Product Type	PLC-CP400
Profibus	No
Programming Software	CP400 Soft
Quote Only	No
Real-time Clock	Yes
Release Type	V11.12.10
RoHS Information	1SBD340002R0202
Screen Color	16 grey levels
Screen Resolution	240 x 240 pixel
Screen Size	1:1 screen 3.5 in
Screen Type	FSTN grey, LED backlight, touch screen
Security	password protection with 9 user levels
Selling Unit of Measure	piece

Serial Port 1 Type	RS232/RS422/RS485
Service Life	30000 hour
Short Description	CP415 M Control Panel 3.5" STN Touch screen 16
Short-Circuit Protective Devices	gG Type Fuses Integrated
Software Function	alarm managementtrendsmacro & laddersub-screen
Stocked At (Warehouses)	Menden, Germany
Supply Voltage	20.4 ... 27.6 V DC
UL Certificate	NRAQ.E240320
UNSPSC	32151703
Viewing Area Height	58.5 mm
Viewing Area Length	58.5 mm
WEEE B2C / B2B	Business To Business
WEEE Category	5. Small Equipment (No External Dimension More Than 50 cm)

PRODUCT-DETAILS

CP420B

CP420B:CP400, control panel 4.7" touchscreen
16 blue levels



General Information

Extended Product Type	CP420B
Product ID	1SBP260182R1001
ABB Type Designation	CP420B
EAN	3471522601827
Catalog Description	CP420B:CP400, control panel 4.7" touchscreen 16 blue levels
Long Description	CP420 B Control Panel 4.7" Touch screen 16 Blue levels

Additional Information

ABB Type Designation	CP420B
Ambient Air Temperature	Operation 0 ... +50 °C Storage -10 ... +60 °C
Battery Type	Portable
Communication	Depend on Driver
Communication Interface	no
Communication Speed	4.8 ... 187.5 kBd
Country of Origin	Taiwan, Province Of China (TW)
cUL Certificate	1SAA960000-1709
Customs Tariff Number	85381000

Data Sheet, Technical Information	1SBC159107L0202
Declaration of Conformity - CE	1SBD240577C1000
Display Type	STN Touch
EAN	3471522601827
Environmental Information	1SBD240182E1000
Fieldbus Interface Type	Modbus RTUAC500_ModbusASCIIothers (contact us)
Frame Size	Undefined
Fuse Size	3.6 x 10_MMTx
Fuse Type	SLEEK.36ESr
Gross Weight	0.86 kg
GSD-file for PROFIBUS Communication	No
Instructions and Manuals	1SBC159102M0201
Instructions and Manuals (Part 2)	1SBC159106M0202
Invoice Description	CP420B:CP400, control panel 4.7" touchscreen 16 blue levels
Made To Order	No
Memory Size User Program	4000 kB
Memory Type User Program	4 MB ROM
Minimum Order Quantity	1 piece
Mounting on DIN Rail	No
Mounting Position	0 to 135 °
Mounting Type	Front face
Number of Characters Per Line	30
Number of Display Lines	16
Number of Function Keys	0
Number of LEDs	0
Operating Mode	off-lineon-line
Order Multiple	1 piece
Power Supply	12 V·A 24 V DC
Product Main Type	CP420
Product Name	Control Panel
Product Net Weight	0.47 kg
Product Type	PLC-CP400
Profibus	No
Programming Software	CP400 Soft
Quote Only	No
Real-time Clock	Yes
Release Type	V10.10.10
RoHS Information	1SBD340002R0202
Screen Color	16 blue levels
Screen Resolution	240 x 128 pixel

Screen Size	16:9 wide screen 4.7 in
Screen Type	STN blue, CCFL backlight, touch screen
Security	password protection with 9 user levels
Selling Unit of Measure	piece
Serial Port 1 Type	RS232/RS485
Serial Port 2 Type	RS422/RS485
Service Life	50000 hour
Short Description	CP420 B Control Panel 4.7" Touch screen 16 Blue
Short-Circuit Protective Devices	gG Type Fuses Integrated
Software Function	alarm managementtrendsmacro & laddersub-screen
Stocked At (Warehouses)	Menden, Germany
Supply Voltage	20.4 ... 27.6 V DC
UL Certificate	NRAQ.E240320
USB Port 1 Type	no
USB Port 2 Type	no
Viewing Area Height	61 mm
Viewing Area Length	111 mm

PRODUCT-DETAILS

CP430B

CP430 B Control Panel 5.7" STN Touch scr



General Information

Extended Product Type	CP430B
Product ID	1SBP260183R1001
ABB Type Designation	CP430B
EAN	3471522601834
Catalog Description	CP430 B Control Panel 5.7" STN Touch scr
Long Description	CP430 B Control Panel 1 menu 5 defined keys 5.7" STN Touch screen 16 Blue levels

Additional

ABB Type Designation	CP430B
Ambient Air Temperature	Operation 0 ... +50 °C Storage -10 ... +60 °C
Battery Type	Portable
CN8	85381000
Communication	Depend on Driver
Communication Interface	no
Communication Speed	4.8 ... 187.5 kBd
Country of Origin	Taiwan, Province Of China (TW)
cUL Certificate	1SAA960000-1709

Customs Tariff Number	85381000
Data Sheet, Technical Information	1SBC159107L0202
Declaration of Conformity - CE	1SBD240576C1000
Display Type	STN Touch + keys
EAN	3471522601834
Environmental Information	1SBD240183E1000
Fieldbus Interface Type	Modbus RTUAC500_ModbusASCIIothers (contact us)
Frame Size	Undefined
Fuse Size	5 x 20_MMTx
Fuse Type	BEL.5TT 1.6-R
Gross Weight	1.25 kg
GSD-file for PROFIBUS Communication	No
Instructions and Manuals	1SBC159103M0202
Instructions and Manuals (Part 2)	1SBC159106M0202
Invoice Description	CP430 B Control Panel 5.7" STN Touch scr
Made To Order	No
Memory Size User Program	4000 kB
Memory Type User Program	4 MB ROM
Minimum Order Quantity	1 piece
Mounting on DIN Rail	No
Mounting Position	0 to 135 °
Mounting Type	Front face
Number of Characters Per Line	40
Number of Display Lines	30
Number of Function Keys	5
Number of LEDs	0
Operating Mode	off-lineon-line
Order Multiple	1 piece
	20 V·A
Power Supply	24 V DC
Product Main Type	CP430
Product Name	Control Panel
Product Net Depth / Length	60 mm
Product Net Height	145 mm
Product Net Weight	0.81 kg
Product Net Width	195 mm
Product Type	PLC-CP400
Profibus	No
Programming Software	CP400 Soft
Quote Only	No
Real-time Clock	Yes

Release Type	V10.10.10
RoHS Information	1SBD340002R0202
Screen Color	16 blue levels
Screen Resolution	320 x 240 pixel
Screen Size	4:3 screen 5.7 in
Screen Type	STN blue, CCFL backlight, touch screen
Security	password protection with 9 user levels
Selling Unit of Measure	piece
Serial Port 1 Type	RS232/RS485
Serial Port 2 Type	RS232/RS422/RS485
Service Life	50000 hour
Short Description	CP430 B Control Panel 5.7" STN Touch screen 16 B
Short-Circuit Protective Devices	gG Type Fuses Integrated
Software Function	alarm managementtrendsmacro & laddersub-screen
Stocked At (Warehouses)	Menden, Germany
Supply Voltage	20.4 ... 27.6 V DC
UL Certificate	NRAQ.E240320
USB Port 1 Type	no
USB Port 2 Type	no
Viewing Area Height	88.4 mm
Viewing Area Length	117.2 mm
WEEE B2C / B2B	Business To Business
WEEE Category	5. Small Equipment (No External Dimension More Than 50 cm)

PRODUCT-DETAILS

CP430BP

CP435 T Control Panel 7" TFT Touch scree



General Information

Extended Product Type	CP430BP
Product ID	1SBP260192R1001
ABB Type Designation	CP430BP
EAN	3471522601926
Catalog Description	CP435 T Control Panel 7" TFT Touch scree
Long Description	CP430 BP Control Panel 1 menu 5 defined keys 5.7" STN Touch screen 16 Blue levels

Additional Information

ABB Type Designation	CP430BP
Ambient Air Temperature	Operation 0 ... +50 °C Storage -10 ... +60 °C
Battery Type	Portable
CN8	85371091
Communication	Depend on Driver
Communication Interface	no
Communication Speed	4.8 ... 187.5 kBd
Country of Origin	Taiwan, Province Of China (TW)
cUL Certificate	1SAA960000-1709
Customs Tariff Number	85371091 1SBC159107L0202

Information

Declaration of Conformity - CE	1SBD240515C1000
Display Type	STN Touch + keys
EAN	3471522601926
eClass	27-33-02-01
Fieldbus Interface Type	Modbus RTUAC500_ModbusASCIlothers (contact us)
Frame Size	Undefined
Fuse Size	5 x 20_MMTx
Fuse Type	BEL.5TT 1.6-R
Gross Weight	1.25 kg
Instructions and Manuals	1SBC159103M0202
Instructions and Manuals (Part 2)	1SBC159106M0202
Invoice Description	CP435 T Control Panel 7" TFT Touch scree
Made To Order	No
Memory Size User Data	512 kB
Memory Size User Program	4000 kB
Memory Type User Data	512 kilobyte RAM
Memory Type User Program	4 MB ROM
Minimum Order Quantity	1 piece
Mounting on DIN Rail	No
Mounting Position	0 to 135 °
Mounting Type	Front face
Number of Characters Per Line	40
Number of Display Lines	30
Number of Function Keys	5
Number of LEDs	0
Operating Mode	off-lineon-line
Order Multiple	1 piece
Power Supply	20 V·A 24 V DC
Product Main Type	CP430
Product Name	Control Panel
Product Net Depth / Length	60 mm
Product Net Height	145 mm
Product Net Weight	0.86 kg
Product Net Width	195 mm
Product Type	PLC-CP400
Profibus	No
Programming Software	CP400 Soft
Quote Only	No
Real-time Clock	Yes
Release Type	V11.11.10
RoHS Information	1SBD340002R0202
Screen Color	16 blue levels
Screen Resolution	320 x 240 pixel
Screen Size	4:3 screen 5.7 in
Screen Type	STN blue, CCFL backlight, touch screen
Security	password protection with 9 user levels

Selling Unit of Measure	piece
Serial Port 1 Type	RS232/RS485
Serial Port 2 Type	RS232/RS422/RS485
Service Life	50000 hour
Short Description	CP430 BP Control Panel 5.7" STN Touch screen 16
Short-Circuit Protective Devices	gG Type Fuses Integrated
Software Function	alarm managementrecipe managementtrendsmacro & laddersub-screen
Stocked At (Warehouses)	Menden, Germany
Supply Voltage	20.4 ... 27.6 V DC
UL Certificate	NRAQ.E240320
UNSPSC	32151703
USB Port 1 Type	Host, version 2.0
USB Port 2 Type	1 Device Ver. 2.0
Viewing Area Height	88.4 mm
Viewing Area Length	117.2 mm
WEEE B2C / B2B	Business To Business
WEEE Category	5. Small Equipment (No External Dimension More Than 50 cm)

PRODUCT-DETAILS

CP430BP-ETH

CP430 T Control Panel 5.7" TFT Touch scr



General Information

Extended Product Type	CP430BP-ETH
Product ID	1SBP260194R1001
ABB Type Designation	CP430BP-ETH
EAN	3471522601940
Catalog Description	CP430 T Control Panel 5.7" TFT Touch scr
Long Description	CP430 BP-ETH Control Panel 1 menu 5 defined keys 5.7" STN Touch screen 16 Blue levels + Ethernet

Additional Information

ABB Type Designation	CP430BP-ETH
Ambient Air Temperature	Operation 0 ... +50 °C Storage -10 ... +60 °C
Battery Type	Portable
CN8	85371091
Communication	Depend on Driver
Communication Interface	Ethernet
Communication Speed	4.8 ... 187.5 kBd
Country of Origin	Taiwan, Province Of China (TW)
cUL Certificate	1SAA960000-1709
Customs Tariff Number	85371091

Data Sheet, Technical Information	1SBC159107L0202
Declaration of Conformity - CE	1SBD240515C1000
Display Type	STN Touch + keys
EAN	3471522601940
eClass	27-33-02-01
Fieldbus Interface Type	Modbus RTUAC500_ModbusASCIIothers (contact us)
Frame Size	Undefined
Fuse Size	5 x 20_MMTx
Fuse Type	BEL.5TT 1.6-R
Gross Weight	1.34 kg
Instructions and Manuals	1SBC159103M0202
Instructions and Manuals (Part 2)	1SBC159106M0202
Invoice Description	CP430 T Control Panel 5.7" TFT Touch scr
Made To Order	No
Memory Size User Data	512 kB
Memory Size User Program	4000 kB
Memory Type User Data	512 kilobyte RAM
Memory Type User Program	4 MB ROM
Minimum Order Quantity	1 piece
Mounting on DIN Rail	No
Mounting Position	0 to 135 °
Mounting Type	Front face
Number of Characters Per Line	40
Number of Display Lines	30
Number of Function Keys	5
Number of LEDs	0
Operating Mode	off-lineon-line
Order Multiple	1 piece
Power Supply	20 V·A 24 V DC
Product Main Type	CP430
Product Name	Control Panel
Product Net Depth / Length	60 mm
Product Net Height	145 mm
Product Net Weight	0.86 kg
Product Net Width	195 mm
Product Type	PLC-CP400
Profibus	No
Programming Software	CP400 Soft
Quote Only	No
Real-time Clock	Yes
Release Type	V11.11.10
RoHS Information	1SBD340002R0202
Screen Color	16 blue levels
Screen Resolution	320 x 240 pixel
Screen Size	4:3 screen 5.7 in
Screen Type	STN blue, CCFL backlight, touch screen

Security	password protection with 9 user levels
Selling Unit of Measure	piece
Serial Port 1 Type	RS232/RS485
Serial Port 2 Type	RS232/RS422/RS485
Service Life	50000 hour
Short Description	CP430 BP-ETH Control Panel 5.7" STN Touch screen
Short-Circuit Protective Devices	gG Type Fuses Integrated
Software Function	alarm managementrecipe managementtrendsmacro & laddersub-screen
Stocked At (Warehouses)	Menden, Germany
Supply Voltage	20.4 ... 27.6 V DC
UL Certificate	NRAQ.E240320
UNSPSC	32151703
USB Port 1 Type	Host, version 2.0
USB Port 2 Type	1 Device Ver. 2.0
Viewing Area Height	88.4 mm
Viewing Area Length	117.2 mm
WEEE B2C / B2B	Business To Business
WEEE Category	5. Small Equipment (No External Dimension More Than 50 cm)

PRODUCT-DETAILS

CP430C-ETH

CP430 C-ETH Control Panel 5.7" STN Touch



General Information

Extended Product Type	CP430C-ETH
Product ID	1SBP260186R1001
ABB Type Designation	CP430C-ETH
EAN	3471522601865
Catalog Description	CP430 C-ETH Control Panel 5.7" STN Touch
Long Description	CP430 C-ETH Control Panel 1 menu 5 defined keys 5.7" STN Touch screen 256 Colors + Ethernet

Additional

ABB Type Designation	CP430C-ETH
Ambient Air Temperature	Operation 0 ... +50 °C Storage -10 ... +60 °C
Battery Type	Portable
CN8	84716070
Communication	Depend on Driver
Communication Interface	Ethernet
Communication Speed	4.8 ... 187.5 kBd
Country of Origin	Germany (DE) France (FR)

Customs Tariff Number	84716070
Data Sheet, Technical Information	1SBC159107L0201
Declaration of Conformity - CE	1SBD240576C1000
Display Type	STN Touch + keys
EAN	3471522601865
Environmental Information	1SBD240186E1000
Fieldbus Interface Type	Modbus RTUAC500_ModbusASCIIothers (contact us)
Frame Size	Undefined
Fuse Size	5 x 20_MMTx
Fuse Type	BEL.5TT 1.6-R
Gross Weight	1.34 kg
GSD-file for PROFIBUS Communication	No
Instructions and Manuals	1SBC159103M0201
Instructions and Manuals (Part 2)	1SBC159106M0202
Invoice Description	CP430 C-ETH Control Panel 5.7" STN Touch
Made To Order	No
Memory Size User Data	512 kB
Memory Size User Program	4000 kB
Memory Type User Data	512 kilobyte RAM
Memory Type User Program	4 MB ROM
Minimum Order Quantity	1 piece
Mounting on DIN Rail	No
Mounting Position	0 to 135 °
Mounting Type	Front face
Number of Characters Per Line	40
Number of Display Lines	30
Number of Function Keys	5
Number of LEDs	0
Operating Mode	off-lineon-line
Order Multiple	1 piece
	20 V·A
Power Supply	24 V DC
Product Main Type	CP430
Product Name	Control Panel
Product Net Depth / Length	60 mm
Product Net Height	145 mm
Product Net Weight	0.81 kg
Product Net Width	195 mm
Product Type	PLC-CP400
Profibus	No
Programming Software	CP400 Soft

Quote Only	No
Real-time Clock	Yes
Release Type	V10.10.10
RoHS Date	237
RoHS Information	1SBD340002R0202
Screen Color	256 colors
Screen Resolution	240 pixel
Screen Size	5.7 in
Security	password protection with 9 user levels
Selling Unit of Measure	piece
Serial Port 1 Type	RS232RS485
Serial Port 2 Type	RS232RS422RS485
Service Life	75000 hour
Short Description	CP430 C-ETH Control Panel 5.7" STN Touch screen
Short-Circuit Protective Devices	gG Type Fuses Integrated
Software Function	alarm managementrecipe managementtrendsmacro & laddersub-screen
Stocked At (Warehouses)	Menden, Germany Menden, Germany New Berlin,Wisconsin, United States Singapore, Singapore Beijing, China Singapore, Singapore Australia, Australia
Supply Voltage	20.4 ... 27.6 V DC
USB Port 1 Type	no
USB Port 2 Type	no
Viewing Area Height	88.4 mm
Viewing Area Length	117.2 mm
WEEE B2C / B2B	Business To Business
WEEE Category	5. Small Equipment (No External Dimension More Than 50 cm)

PRODUCT-DETAILS

CP430T

CP430 T-ETH Control Panel 5.7" TFT Touch



General Information

Extended Product Type	CP430T
Product ID	1SBP260195R1001
ABB Type Designation	CP430T
EAN	3471522601957
Catalog Description	CP430 T-ETH Control Panel 5.7" TFT Touch
Long Description	CP430 T Control Panel 1 menu 5 defined keys 5.7" TFT Touch screen 64K Colors

Additional Information

ABB Type Designation	CP430T
Ambient Air Temperature	Operation 0 ... +50 °C Storage -10 ... +60 °C
Battery Type	Portable
CN8	85381000
Communication	Depend on Driver
Communication Interface	no
Communication Speed	4.8 ... 187.5 kBd
Country of Origin	Taiwan, Province Of China (TW)
cUL Certificate	1SAA960000-1709

Customs Tariff Number	85381000
Data Sheet, Technical Information	1SBC159107L0202
Declaration of Conformity - CE	1SBD240515C1000
Display Type	TFT Touch + keys
EAN	3471522601957
Fieldbus Interface Type	Modbus RTUAC500_ModbusASCIlothers (contact us)
Frame Size	Spare_Parts
Fuse Size	5 x 20_MMTx
Fuse Type	SLEEK.36ESr
Gross Weight	1.31 kg
Instructions and Manuals	1SBC159103M0202
Instructions and Manuals (Part 2)	1SBC159106M0202
Invoice Description	CP430 T-ETH Control Panel 5.7" TFT Touch
Made To Order	No
Memory Size User Data	512 kB
Memory Size User Program	4000 kB
Memory Type User Data	512 kilobyte RAM
Memory Type User Program	4 MB ROM
Minimum Order Quantity	1 piece
Mounting on DIN Rail	No
Mounting Position	0 to 135 °
Mounting Type	Front face
Number of Characters Per Line	40
Number of Display Lines	30
Number of Function Keys	5
Number of LEDs	0
Operating Mode	off-lineon-line
Order Multiple	1 piece
Package Level 1 Units	0 carton
Part Type	New
	20 V·A
Power Supply	24 V DC
Product Main Type	CP430
Product Name	"Color TFT-Touchscreen 5,7",USB
Product Net Depth / Length	60 mm
Product Net Height	145 mm
Product Net Weight	0.86 kg
Product Net Width	195 mm
Product Type	PLC-CP400
Profibus	No
Programming Software	CP400 Soft

Quote Only	No
Real-time Clock	Yes
Release Type	V11.11.10
RoHS Information	1SBD340002R0202
Screen Color	64k colors
Screen Resolution	320 x 240 pixel
Screen Size	4:3 screen 5.7 in
Screen Type	TFT color, CCFL backlight, touch screen
Security	password protection with 9 user levels
Selling Unit of Measure	piece
Serial Port 1 Type	RS232/RS485
Serial Port 2 Type	RS232/RS422/RS485
Service Life	60000 hour
Short Description	CP430 T Control Panel 5.7" TFT Touch screen 64KC
Short-Circuit Protective Devices	gG Type Fuses Integrated
Software Function	alarm managementrecipe managementtrendsmacro & laddersub-screen
Stocked At (Warehouses)	Menden, Germany Singapore, Singapore
Supply Voltage	20.4 ... 27.6 V DC
UL Certificate	NRAQ.E240320
USB Port 1 Type	Host, version 2.0
USB Port 2 Type	1 Device Ver. 2.0
Viewing Area Height	88.4 mm
Viewing Area Length	117.2 mm
WEEE B2C / B2B	Business To Business
WEEE Category	5. Small Equipment (No External Dimension More Than 50 cm)

PRODUCT-DETAILS

CP430T-ETH

CP435 T-ETH Control Panel 7" TFT Touch s



General Information

Extended Product Type	CP430T-ETH
Product ID	1SBP260196R1001
ABB Type Designation	CP430T-ETH
EAN	3471522601964
Catalog Description	CP435 T-ETH Control Panel 7" TFT Touch s
Long Description	CP430 T-ETH Control Panel 1 menu 5 defined keys 5.7" TFT Touch screen 64K Colors + Ethernet

Additional Information

ABB Type Designation	CP430T-ETH
Ambient Air Temperature	Operation 0 ... +50 °C Storage -10 ... +60 °C
Battery Type	Portable
CN8	85381000
Communication	Depend on Driver
Communication Interface	Ethernet
Communication Speed	4.8 ... 187.5 kBd
Country of Origin	Taiwan, Province Of China (TW)

cUL Certificate	1SAA960000-1709
Customs Tariff Number	85381000
Data Sheet, Technical Information	1SBC159107L0202
Declaration of Conformity - CE	1SBD240515C1000
Display Type	TFT Touch + keys
EAN	3471522601964
Fieldbus Interface Type	Modbus RTUAC500_ModbusASCIIothers (contact us)
Frame Size	Undefined
Fuse Size	5 x 20_MMTx
Fuse Type	SLEEK.36ESr
Gross Weight	1.34 kg
Instructions and Manuals	1SBC159103M0202
Instructions and Manuals (Part 2)	1SBC159106M0202
Invoice Description	CP435 T-ETH Control Panel 7" TFT Touch s
Made To Order	No
Memory Size User Data	512 kB
Memory Size User Program	4000 kB
Memory Type User Data	512 kilobyte RAM
Memory Type User Program	4 MB ROM
Minimum Order Quantity	1 piece
Mounting on DIN Rail	No
Mounting Position	0 to 135 °
Mounting Type	Front face
Number of Characters Per Line	40
Number of Display Lines	30
Number of Function Keys	5
Number of LEDs	0
Operating Mode	off-lineon-line
Order Multiple	1 piece
Power Supply	20 V·A
Power Supply	24 V DC
Product Main Type	CP430
Product Name	Control Panel
Product Net Depth / Length	60 mm
Product Net Height	145 mm
Product Net Weight	0.86 kg
Product Net Width	195 mm
Product Type	PLC-CP400
Profibus	No
Programming Software	CP400 Soft
Quote Only	No

Real-time Clock	Yes
Release Type	V11.11.10
RoHS Information	1SBD340002R0202
Screen Color	64k colors
Screen Resolution	320 x 240 pixel
Screen Size	4:3 screen 5.7 in
Screen Type	TFT color, CCFL backlight, touch screen
Security	password protection with 9 user levels
Selling Unit of Measure	piece
Serial Port 1 Type	RS232/RS485
Serial Port 2 Type	RS232/RS422/RS485
Service Life	60000 hour
Short Description	CP430 T-ETH Control Panel 5.7" TFT Touch screen
Short-Circuit Protective Devices	gG Type Fuses Integrated
Software Function	alarm managementrecipe managementtrendsmacro & laddersub-screen
Stocked At (Warehouses)	Menden, Germany
Supply Voltage	20.4 ... 27.6 V DC
UL Certificate	NRAQ.E240320
USB Port 1 Type	Host, version 2.0
USB Port 2 Type	1 Device Ver. 2.0
Viewing Area Height	88.4 mm
Viewing Area Length	117.2 mm
WEEE B2C / B2B	Business To Business
WEEE Category	5. Small Equipment (No External Dimension More Than 50 cm)

PRODUCT-DETAILS

CP555

CP555 Control Panel, CP500soft needed



General Information

Extended Product Type	CP555
Product ID	1SBP260179R1001
ABB Type Designation	CP555
Catalog Description	CP555 Control Panel, CP500soft needed
Long Description	Control Panel Touch screen 256 Colors TFT Graphics & text 10.4" 640x480 Pixels

Additional Information

ABB Type Designation	CP555
Ambient Air Temperature	Operation 0 ... +50 °C Storage -20 ... +70 °C
Battery Type	Portable
CN8	84716070
Communication	Depend on Driver
Communication Interface	Ethernet with IFC ETTP
Communication Speed	9.6 ... 57.6 kBd
Country of Origin	France (FR)
Customs Tariff Number	84716070
Data Sheet, Technical Information	1SBC159001M6501
Declaration of Conformity - CE	1SBD240567C1000

Degree of Protection	IP65
Display Type	TFT touch
Environmental Information	1SBD240179E1000
Fieldbus Interface Type	Modbus RTUAC500_ModbusASCIIProfibus DP Slave (option)Modbus TCP_IPothers (contact us)
Frame Size	Undefined
Fuse Size	F6.3A
Fuse Type	F6.3A
Gross Weight	3.1 kg
GSD-file for PROFIBUS Communication	CP500_IFC-PBDP.gsd
Instructions and Manuals	1SBC159002M0202
Invoice Description	CP555 Control Panel, CP500soft needed
Made To Order	No
Memory Size	1600 kB
Memory Size User Data	1600 kB
Memory Size User Program	1600 kB
Memory Type User Data	1600 kilobyte non-volatile RAM
Memory Type User Program	1600 KB Flash EPROM
Minimum Order Quantity	1 piece
Mounting on DIN Rail	No
Mounting Type	Front face
Number of Characters Per Line	20128
Number of Display Lines	18120
Operating Mode	no
Order Multiple	1 piece
	24 V·A
Power Supply	24 V DC
Product Depth	114 mm
Product Main Type	CP555
Product Name	Control Panel
Product Net Depth / Length	105 mm
Product Net Height	250 mm
Product Net Weight	3 kg
Product Net Width	290 mm
Product Type	PLC-CP500
Profibus	With IFC PBDP
Programming Software	CP500 Soft
Quote Only	No
Real-time Clock	Yes
Release Type	V1.02
Screen Color	256 colors
Screen Resolution	480 pixel
Screen Size	10.4 in
Screen Type	TFT touch
Security	password protection with 8 user levels
Selling Unit of Measure	piece
Serial Port 1 Type	PR,MODBUS,ASCII,others
Serial Port 2 Type	PR,MODBUS,ASCII,others
Service Life	50000 hour
Short Description	Control Panel Touch screen 256 Colors TFT Graphi

Software Function	alarm management recipe management trends
Stocked At (Warehouses)	Menden, Germany
Supply Voltage	20 ... 30 V DC
UL Certificate	NRAG.E224886
USB Port 1 Type	no
USB Port 2 Type	no
Viewing Area Height	158.4 mm
Viewing Area Length	211.2 mm
WEEE B2C / B2B	Business To Business
WEEE Category	5. Small Equipment (No External Dimension More Than 50 cm)

По вопросам продаж и поддержки обращайтесь:

Алматы (7273)495-231
 Ангарск (3955)60-70-56
 Архангельск (8182)63-90-72
 Астрахань (8512)99-46-04
 Барнаул (3852)73-04-60
 Белгород (4722)40-23-64
 Благовещенск (4162)22-76-07
 Брянск (4832)59-03-52
 Владивосток (423)249-28-31
 Владикавказ (8672)28-90-48
 Владимир (4922)49-43-18
 Волгоград (844)278-03-48
 Вологда (8172)26-41-59
 Воронеж (473)204-51-73
 Екатеринбург (343)384-55-89
 Иваново (4932)77-34-06
 Ижевск (3412)26-03-58
 Иркутск (395)279-98-46
 Казань (843)206-01-48

Калининград (4012)72-03-81
 Калуга (4842)92-23-67
 Кемерово (3842)65-04-62
 Киров (8332)68-02-04
 Коломна (4966)23-41-49
 Кострома (4942)77-07-48
 Краснодар (861)203-40-90
 Красноярск (391)204-63-61
 Курган (3522)50-90-47
 Курск (4712)77-13-04
 Липецк (4742)52-20-81
 Магнитогорск (3519)55-03-13
 Москва (495)268-04-70
 Мурманск (8152)59-64-93
 Набережные Челны (8552)20-53-41
 Нижний Новгород (831)429-08-12
 Новокузнецк (3843)20-46-81
 Новосибирск (383)227-86-73
 Ноябрьск (3496)41-32-12

Омск (3812)21-46-40
 Орел (4862)44-53-42
 Оренбург (3532)37-68-04
 Пенза (8412)22-31-16
 Пермь (342)205-81-47
 Петрозаводск (8142)55-98-37
 Псков (8112)59-10-37
 Ростов-на-Дону (863)308-18-15
 Рязань (4912)46-61-64
 Самара (846)206-03-16
 Санкт-Петербург (812)309-46-40
 Саранск (8342)22-96-24
 Саратов (845)249-38-78
 Севастополь (8692)22-31-93
 Симферополь (3652)67-13-56
 Смоленск (4812)29-41-54
 Сочи (862)225-72-31
 Ставрополь (8652)20-65-13
 Сургут (3462)77-98-35

Сыктывкар (8212)25-95-17
 Тамбов (4752)50-40-97
 Тверь (4822)63-31-35
 Тольятти (8482)63-91-07
 Томск (3822)98-41-53
 Тула (4872)33-79-87
 Тюмень (3452)66-21-18
 Улан-Удэ (3012)59-97-51
 Ульяновск (8422)24-23-59
 Уфа (347)229-48-12
 Хабаровск (4212)92-98-04
 Чебоксары (8352)28-53-07
 Челябинск (351)202-03-61
 Череповец (8202)49-02-64
 Чита (3022)38-34-83
 Якутск (4112)23-90-97
 Ярославль (4852)69-52-93

Россия +7(495)268-04-70

Казахстан +7(7172)727-132

Киргизия +996(312)96-26-47

<https://abbdrives.nt-rt.ru/> || aei@nt-rt.ru