

По вопросам продаж и поддержки обращайтесь:

Самары (7273)495-231
Ангарск (3955)60-70-56
Архангельск (8182)63-90-72
Астрахань (8512)99-46-04
Барнаул (3852)73-04-60
Белгород (4722)40-23-64
Благовещенск (4162)22-76-07
Брянск (4832)59-03-52
Владивосток (423)249-28-31
Владикавказ (8672)28-90-48
Владимир (4922)49-43-18
Волгоград (844)278-03-48
Вологда (8172)26-41-59
Воронеж (473)204-51-73
Екатеринбург (343)384-55-89
Иваново (4932)77-34-06
Ижевск (3412)26-03-58
Иркутск (395)279-98-46
Казань (843)206-01-48

Калининград (4012)72-03-81
Калуга (4842)92-23-67
Кемерово (3842)65-04-62
Киров (8332)68-02-04
Коломна (4966)23-41-49
Кострома (4942)77-07-48
Краснодар (861)203-40-90
Красноярск (391)204-63-61
Курган (3522)50-90-47
Курск (4712)77-13-04
Липецк (4742)52-20-81
Магнитогорск (3519)55-03-13
Москва (495)268-04-70
Мурманск (8152)59-64-93
Набережные Челны (8552)20-53-41
Нижний Новгород (831)429-08-12
Новокузнецк (3843)20-46-81
Новосибирск (383)227-86-73
Ноябрьск(3496)41-32-12

Омск (3812)21-46-40
Орел (4862)44-53-42
Оренбург (3532)37-68-04
Пенза (8412)22-31-16
Пермь (342)205-81-47
Петрозаводск (8142)55-98-37
Псков (8112)59-10-37
Ростов-на-Дону (863)308-18-15
Рязань (4912)46-61-64
Самара (846)206-03-16
Санкт-Петербург (812)309-46-40
Саранск (8342)22-96-24
Саратов (845)249-38-78
Севастополь (8692)22-31-93
Симферополь (3652)67-13-56
Смоленск (4812)29-41-54
Сочи (862)225-72-31
Ставрополь (8652)20-65-13
Сургут (3462)77-98-35

Сыктывкар (8212)25-95-17
Тамбов (4752)50-40-97
Тверь (4822)63-31-35
Тольятти (8482)63-91-07
Томск (3822)98-41-53
Тула (4872)33-79-87
Тюмень (3452)66-21-18
Улан-Удэ (3012)59-97-51
Ульяновск (8422)24-23-59
Уфа (347)229-48-12
Хабаровск (4212)92-98-04
Чебоксары (8352)28-53-07
Челябинск (351)202-03-61
Череповец (8202)49-02-64
Чита (3022)38-34-83
Якутск (4112)23-90-97
Ярославль (4852)69-52-93

Россия +7(495)268-04-70

Казахстан +7(7172)727-132

Киргизия +996(312)96-26-47

<https://abbdrives.nt-rt.ru/> || aei@nt-rt.ru

ПРИВОДЫ ПЕРЕМЕННОГО ТОКА НИЗКОВОЛЬТНЫЕ

Техническое описание на преобразователи ACS550-CC



Technical Data

Ratings

Note! The ratings listed below are additions to the ratings listed in the ACS550-01/U1 User's Manual.

Ratings, 380...480 Volt Drives

Type Code	Valid up to 40°C (104 °F)				Frame Size
	Normal Use		Heavy-Duty Use		
	I_{2N} A	P_N HP	I_{2hd} A	P_{hd} HP	
-245A-4	245	200	192	150	R7
-316A-4	316	250	240	200	R8
-368A-4	368	300	302	250	R8
-414A-4	414	350	368	300	R8
-486A-4	486	400	414	350	R8

Input Power Connections

Branch Circuit Protection

Input power is connected to the ACS550 with Bypass through a circuit breaker that provides the branch circuit short circuit and ground fault protection for the motor operating in the bypass mode.

Fuses

Drive input fuses are provided to disconnect the drive from power in the event that a component fails in the drive's input power circuitry. The drive's electronic protection circuitry is designed to clear drive output short circuits and ground faults without blowing the drive input fuses. Drive input fuses are shown in the following tables.

NOTE! Although fuses listed are similar in functional characteristics to fuses listed in the ACS550-01/U1 User's Manual, physical characteristics may differ. Fuses from other manufacturers can be used if they meet the functional characteristics of those shown in the tables.

208...240 Volt Fuses

208... 240 Volt		Frame Size	Drive Input Fuse Ratings	
HP	Identification		Amps (600V)	Bussmann Type
1	ACS550-CC-04A6-2	R1	15	KTK-R-15
1.5	ACS550-CC-06A6-2	R1	15	KTK-R-15
2	ACS550-CC-07A5-2	R1	15	KTK-R-15
3	ACS550-CC-012A-2	R1	15	KTK-R-15
5	ACS550-CC-017A-2	R1	30	KTK-R-30
7.5	ACS550-CC-024A-2	R2	30	KTK-R-30
10	ACS550-CC-031A-2	R2	50	JJS-50
15	ACS550-CC-046A-2	R3	80	JJS-80
20	ACS550-CC-059A-2	R3	80	JJS-80
25	ACS550-CC-075A-2	R4	100	JJS-100
30	ACS550-CC-088A-2	R4	110	JJS-110
40	ACS550-CC-114A-2	R4	150	JJS-150
50	ACS550-CC-143A-2	R6	200	JJS-200
60	ACS550-CC-178A-2	R6	250	JJS-250
75	ACS550-CC-221A-2	R6	300	JJS-300
100	ACS550-CC-248A-2	R6	350	JJS-350

380...480 Volt Fuses

380... 480 Volt		Frame Size	Drive Input Fuse Ratings	
HP	Identification		Amps (600V)	Bussmann Type
1/1.5	ACS550-CC-03A3-4	R1	15	KTK-R-15
2	ACS550-CC-04A1-4	R1	15	KTK-R-15
3	ACS550-CC-06A9-4	R1	15	KTK-R-15
5	ACS550-CC-08A8-4	R1	15	KTK-R-15
7.5	ACS550-CC-012A-4	R1	15	KTK-R-15
10	ACS550-CC-015A-4	R2	30	KTK-R-30
15	ACS550-CC-023A-4	R2	30	KTK-R-30
20	ACS550-CC-031A-4	R3	50	JJS-50
25	ACS550-CC-038A-4	R3	50	JJS-50
30	ACS550-CC-045A-4	R3	100	JJS-100
30	ACS550-CC-044A-4	R4	100	JJS-100
40	ACS550-CC-059A-4	R4	100	JJS-100
50	ACS550-CC-072A-4	R4	100	JJS-100
60	ACS550-CC-078A-4	R4	100	JJS-100
75	ACS550-CC-097A-4	R4	125	JJS-125
75	ACS550-CC-096A-4	R5	125	JJS-125
100	ACS550-CC-125A-4	R5	175	JJS-175
100	ACS550-CC-124A-4	R6	175	JJS-175
125	ACS550-CC-157A-4	R6	200	JJS-200
150	ACS550-CC-180A-4	R6	250	JJS-250
200	ACS550-CC-246A-4	R6	400	JJS-400
200	ACS550-CC-245A-4	R7	400	JJS-400
250	ACS550-CC-316A-4	R8	400	JJS-400
300	ACS550-CC-368A-4	R8	400	JJS-400
350	ACS550-CC-414A-4	R8	600	JJS-600
400	ACS550-CC-486A-4	R8	600	JJS-600

Fuses, 500...600 Volt, Fuses

500...600 Volt		Frame Size	Drive Input Fuse Ratings	
HP	Identification		Amps (600V)	Bussmann Type
2	ACS550-CC-02A7-6	R2	15	KTK-R-15
3	ACS550-CC-03A9-6	R2	15	KTK-R-15
5	ACS550-CC-06A1-6	R2	15	KTK-R-15
7.5	ACS550-CC-09A0-6	R2	15	KTK-R-15
10	ACS550-CC-011A-6	R2	30	KTK-R-30
15	ACS550-CC-017A-6	R2	30	KTK-R-30
20	ACS550-CC-022A-6	R3	50	JJS-50
25	ACS550-CC-027A-6	R3	50	JJS-50
30	ACS550-CC-032A-6	R4	100	JJS-100
40	ACS550-CC-041A-6	R4	100	JJS-100
50	ACS550-CC-052A-6	R4	100	JJS-100
60	ACS550-CC-062A-6	R4	100	JJS-100
75	ACS550-CC-077A-6	R6	100	JJS-100
100	ACS550-CC-099A-6	R6	150	JJS-150
125	ACS550-CC-125A-6	R6	175	JJS-175
150	ACS550-CC-144A-6	R6	200	JJS-200

Power Connection Terminals

The following tables show maximum wire size and required tightening torque for incoming power and motor terminals, and grounding terminal lug information.

208...240 Volt, Terminals

208...240 Volt, Power Connection Terminal Data					
208...240 Volt		Base Drive Frame Size	Power Wiring Size		
HP	Type Code		Circuit Breaker	Overload Relay	Ground Lugs
1	ACS550-CC-04A6-2	R1	#10 35 in-lbs	#10 13 in-lbs	#2 15 in-lbs (#14 - #12) 40 in-lbs (#10 - #6) 50 in-lbs (#4 - #2)
1.5	ACS550-CC-06A6-2	R1			
2	ACS550-CC-07A5-2	R1			
3	ACS550-CC-012A-2	R1			
5	ACS550-CC-017A-2	R1			
7.5	ACS550-CC-024A-2	R2	#6 45 in-lbs	#8 21 in-lbs	
10	ACS550-CC-031A-2	R2			
15	ACS550-CC-046A-2	R3	#3 50 in-lbs	#3 36 in-lbs	
20	ACS550-CC-059A-2	R3			
25	ACS550-CC-075A-2	R4	#1 50 in-lbs	#2 36 in-lbs	
30	ACS550-CC-088A-2	R4			
40	ACS550-CC-114A-2	R4			
50	ACS550-CC-143A-2	R6	300 MCM 274 in-lbs	250 MCM 300 in-lbs	#2/0 275 in-lbs (#6 - #2) 375 in-lbs (#1 - #2/0)
60	ACS550-CC-178A-2	R6			
75	ACS550-CC-221A-2	R6	2 x 250 MCM 275 in-lbs	2 x 250 MCM 375 in-lbs	350 MCM 100 in-lbs
100	ACS550-CC-248A-2	R6			

380...480 Volt, Terminals

380...480 Volt, Power Connection Terminal Data						
380...480 Volt		Base Drive Frame Size	Power Wiring Size			
HP	Type Code		Circuit Breaker	Overload Relay	Ground Lugs	
1/1.5	ACS550-CC-03A3-4	R1	#10 35 in-lbs	#10 13 in-lbs	#2 15 in-lbs (#14 - #12) 40 in-lbs (#10 - #6) 50 in-lbs (#4 - #2)	
2	ACS550-CC-04A1-4	R1				
3	ACS550-CC-06A9-4	R1				
5	ACS550-CC-08A8-4	R1				
7.5	ACS550-CC-012A-4	R1				
10	ACS550-CC-015A-4	R2	#6 45 in-lbs	#8 21 in-lbs		
15	ACS550-CC-023A-4	R2				
20	ACS550-CC-031A-4	R3	#3 50 in-lbs	#3 36 in-lbs		
25	ACS550-CC-038A-4	R3				
30	ACS550-CC-045A-4	R3				
30	ACS550-CC-044A-4	R4	#1 50 in-lbs	#2 36 in-lbs		
40	ACS550-CC-059A-4	R4				
50	ACS550-CC-072A-4	R4				
60	ACS550-CC-078A-4	R4				
75	ACS550-CC-097A-4	R4	300 MCM 274 in-lbs	250 MCM 300 in-lbs		
75	ACS550-CC-096A-4	R5				
100	ACS550-CC-125A-4	R5				
100	ACS550-CC-124A-4	R6				
125	ACS550-CC-157A-4	R6				
150	ACS550-CC-180A-4	R6	2 x 250 MCM 275 in-lbs	2 x 250 MCM 375 in-lbs	#2/0 275 in-lbs (#6 - #2) 375 in-lbs (#1 - #2/0)	
200	ACS550-CC-246A-4	R6				
200	ACS550-CC-245A-4	R7				
250	ACS550-CC-316A-4	R8			2 x 500 MCM 275 in-lbs	2 x 500MCM 375 in-lbs
300	ACS550-CC-368A-4	R8				
350	ACS550-CC-414A-4	R8				
400	ACS550-CC-486A-4	R8				

500...600 Volt, Terminals

500...600 Volt, Power Connection Terminal Data					
500...600 Volt		Base Drive Frame Size	Power Wiring Size		
HP	Type Code		Circuit Breaker	Overload Relay	Ground Lugs
2	ACS550-CC-02A7-6	R2	#6 62 in-lbs	#10 13 in-lbs	#2 15 in-lbs (#14 - #12) 40 in-lbs (#10 - #6) 50 in-lbs (#4 - #2)
3	ACS550-CC-03A9-6	R2			
5	ACS550-CC-06A1-6	R2			
7.5	ACS550-CC-09A0-6	R2			
10	ACS550-CC-011A-6	R2			
15	ACS550-CC-017A-6	R2			
20	ACS550-CC-022A-6	R3	#3 62 in-lbs	#8 21 in-lbs	
25	ACS550-CC-027A-6	R3			
30	ACS550-CC-032A-6	R4	#1 62 in-lbs	#2 36 in-lbs	
40	ACS550-CC-041A-6	R4			
50	ACS550-CC-052A-6	R4			
60	ACS550-CC-062A-6	R4			
75	ACS550-CC-077A-6	R6	300 MCM 200 in-lbs	250 MCM 300 in-lbs	#2/0 275 in-lbs (#6 - #2) 375 in-lbs (#1 - #2/0)
100	ACS550-CC-099A-6	R6			
125	ACS550-CC-125A-6	R6			
150	ACS550-CC-144A-6	R6			

Motor Connection Specifications – R7/R8

Motor Connection Specifications				
Maximum Motor Cable Length	Frame Size	Max. Motor Cable Length*		
		f _{sw} = 1 or 4 kHz		f _{sw} = 8 kHz or 12 kHz
	R7...R8	300 m	980 ft	Does not apply



* Warning! Using a motor cable longer than specified in the chart above may cause permanent damage to the drive.

Cooling – R7/R8

Cooling Specifications	
Method	Internal fan, flow direction from bottom to top.
Requirement	Allow 4 to 6 inches at the sides of enclosure for venting.

Air Flow, 380...480 Volt Drives – R7/R8

The following table lists heat loss and air flow data for 380...480 Volt drives.

Drive		Heat Loss		Air Flow	
ACS550-xx-	Frame Size	W	BTU/Hr	m ³ /h	ft ³ /min
-245A-4	R7	3850	13000	300	540
-316A-4	R8	5300	18000	700	1220
-368A-4	R8	6850	23000	700	1220
-414A-4	R8	7000	24000	700	1220
-486A-4	R8	7600	26000	700	1220

Dimensions and Weights

Dimensional References

The following tables contain dimensional references that will be needed to identify the dimensional information applying to a given device type code.

208/230V Bypass Packages

HP	Type Code	Amp	Frame	UL Type (NEMA) 1 Dim. Ref. Page 29	UL Type (NEMA) 12 Dim. Ref. Page 30	UL Type (NEMA) 3R Dim. Ref. Page 31
1	ACS550-CC-04A6-2	4.6	R1	CX1-1	CX12-1	CX3R-1
1.5	ACS550-CC-06A6-2	6.6	R1	CX1-1	CX12-1	CX3R-1
2	ACS550-CC-07A5-2	7.5	R1	CX1-1	CX12-1	CX3R-1
3	ACS550-CC-012A-2	12	R1	CX1-1	CX12-1	CX3R-1
5	ACS550-CC-017A-2	17	R1	CX1-1	CX12-1	CX3R-1
7.5	ACS550-CC-024A-2	24	R2	CX1-3	CX12-3	CX3R-3
10	ACS550-CC-031A-2	31	R2	CX1-3	Cx12-3	CX3R-3
15	ACS550-CC-046A-2	46	R3	CX1-4	CX12-5	CX3R-5
20	ACS550-CC-059A-2	59	R3	CX1-4	CX12-5	CX3R-5
25	ACS550-CC-075A-2	75	R4	CX1-6	CX12-6	CX3R-6
30	ACS550-CC-088A-2	88	R4	CX1-9	CX12-7	CX3R-7
40	ACS550-CC-114A-2	114	R4	CX1-9	CX12-7	CX3R-7
50	ACS550-CC-143A-2	143	R6	CX1-10	CX12-10	CX3R-10
60	ACS550-CC-178A-2	178	R6	CX1-10	CX12-10	CX3R-10
75	ACS550-CC-221A-2	221	R6	CX1-11	CX12-10	CX3R-10
100	ACS550-CC-248A-2	248	R6	CX1-11	CX12-10	CX3R-10

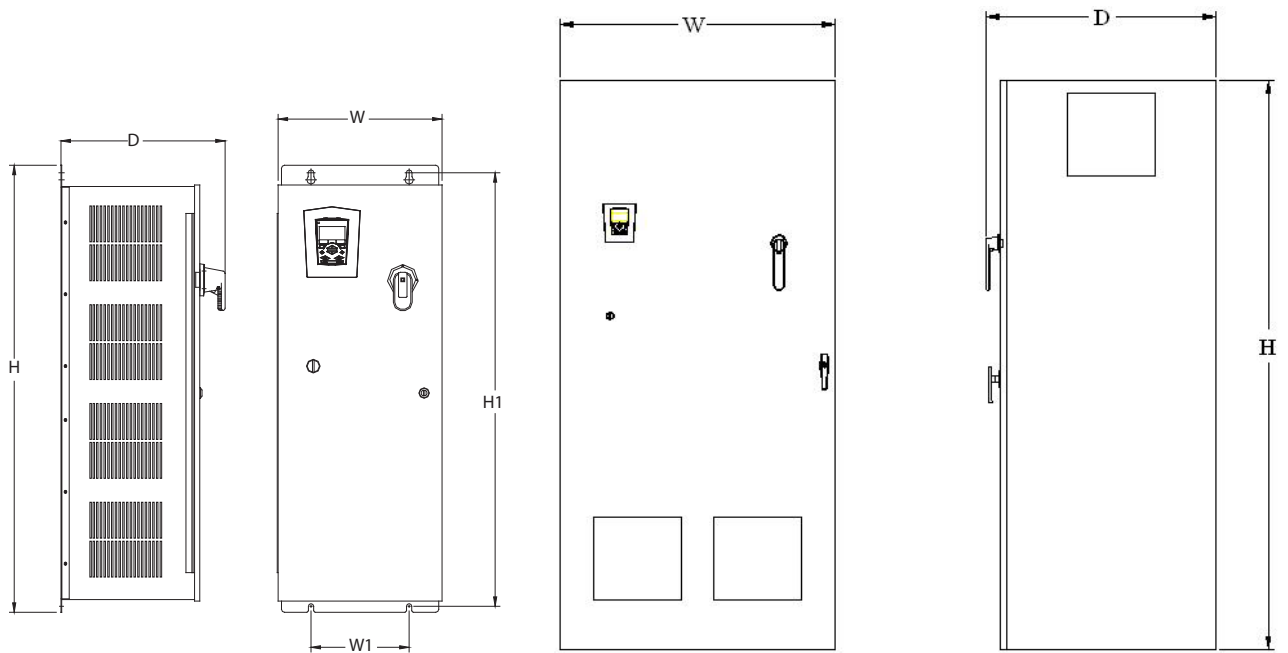
480V Bypass Packages

HP	Type Coxe	Amp	Frame	UL Type (NEMA) 1 Dim. Ref. Page 29	UL Type (NEMA) 12 Dim. Ref. Page 30	UL Type (NEMA) 3R Dim. Ref. Page 31
1	ACS550-CC-03A3-4	3.3	R1	CX1-1	CX12-1	CX3R-1
1.5	ACS550-CC-03A3-4	3.3	R1	CX1-1	CX12-1	CX3R-1
2	ACS550-CC-04A1-4	4.1	R1	CX1-1	CX12-1	CX3R-1
3	ACS550-CC-06A9-4	6.9	R1	CX1-1	CX12-1	CX3R-1
5	ACS550-CC-08A8-4	8.8	R1	CX1-1	CX12-1	CX3R-1
7.5	ACS550-CC-012A-4	12	R1	CX1-1	CX12-1	CX3R-1
10	ACS550-CC-015A-4	15	R2	CX1-2	CX12-2	CX3R-2
15	ACS550-CC-023A-4	23	R2	CX1-2	CX12-2	CX3R-2
20	ACS550-CC-031A-4	31	R3	CX1-4	CX12-4	CX3R-4
25	ACS550-CC-038A-4	38	R3	CX1-4	CX12-4	CX3R-4
30	ACS550-CC-045A-4	44	R3	CX1-4	CX12-5	CX3R-5
40	ACS550-CC-059A-4	59	R4	CX1-5	CX12-6	CX3R-6
50	ACS550-CC-072A-4	72	R4	CX1-5	CX12-6	CX3R-6
60	ACS550-CC-078A-4	78	R4	CX1-5	CX12-6	CX3R-6
75	ACS550-CC-097A-4	96	R4	CX1-6	CX12-7	CX3R-7
100	ACS550-CC-125A-4	124	R5	CX1-7	CX12-8	CX3R-8
125	ACS550-CC-157A-4	157	R6	CX1-10	CX12-9	CX3R-9
150	ACS550-CC-180A-4	180	R6	CX1-10	CX12-9	CX3R-9
200	ACS550-CC-246A-4	245	R6	CX1-11	CX12-10	CX3R-10
250	ACS550-CC-316A-4	316	R8	CX1-12	CX12-11	Consult Factory
300	ACS550-CC-368A-4	368	R8	CX1-13	CX12-12	
350	ACS550-CC-414A-4	414	R8	CX1-13	CX12-12	
400	ACS550-CC-486A-4	486	R8	CX1-13	CX12-12	

600V Bypass Packages

HP	Type Code	Amp	Frame	UL Type (NEMA) 1 Dim. Ref. Page 29	UL Type (NEMA) 12 Dim. Ref. Page 30	UL Type (NEMA) 3R Dim. Ref. Page 31
2	ACS550-CC-02A7-6	2.7	R2	CX1-2	CX12-2	CX3R-2
3	ACS550-CC-03A9-6	3.9	R2	CX1-2	CX12-2	CX3R-2
5	ACS550-CC-06A1-6	6.1	R2	CX1-2	CX12-2	CX3R-2
7.5	ACS550-CC-09A0-6	9	R2	CX1-2	CX12-2	CX3R-2
10	ACS550-CC-011A-6	11	R2	CX1-2	CX12-2	CX3R-2
15	ACS550-CC-017A-6	17	R2	CX1-2	CX12-2	CX3R-2
20	ACS550-CC-022A-6	22	R3	CX1-4	CX12-4	CX3R-4
25	ACS550-CC-027A-6	27	R3	CX1-4	CX12-4	CX3R-4
30	ACS550-CC-032A-6	32	R4	CX1-5	CX12-6	CX3R-6
40	ACS550-CC-041A-6	41	R4	CX1-5	CX12-6	CX3R-6
50	ACS550-CC-052A-6	52	R4	CX1-5	CX12-6	CX3R-6
60	ACS550-CC-062A-6	62	R4	CX1-5	CX12-6	CX3R-6
75	ACS550-CC-077A-6	77	R6	CX1-8	CX12-9	CX3R-9
100	ACS550-CC-099A-6	99	R6	CX1-8	CX12-9	CX3R-9
125	ACS550-CC-125A-6	125	R6	CX1-10	CX12-9	CX3R-9
150	ACS550-CC-144A-6	144	R6	CX1-10	CX12-9	CX3R-9

Dimensions: ACS550-CC NEMA 1 R1 through R8 Frame Size



CX1-1 to CX1-11 Wall Mounted

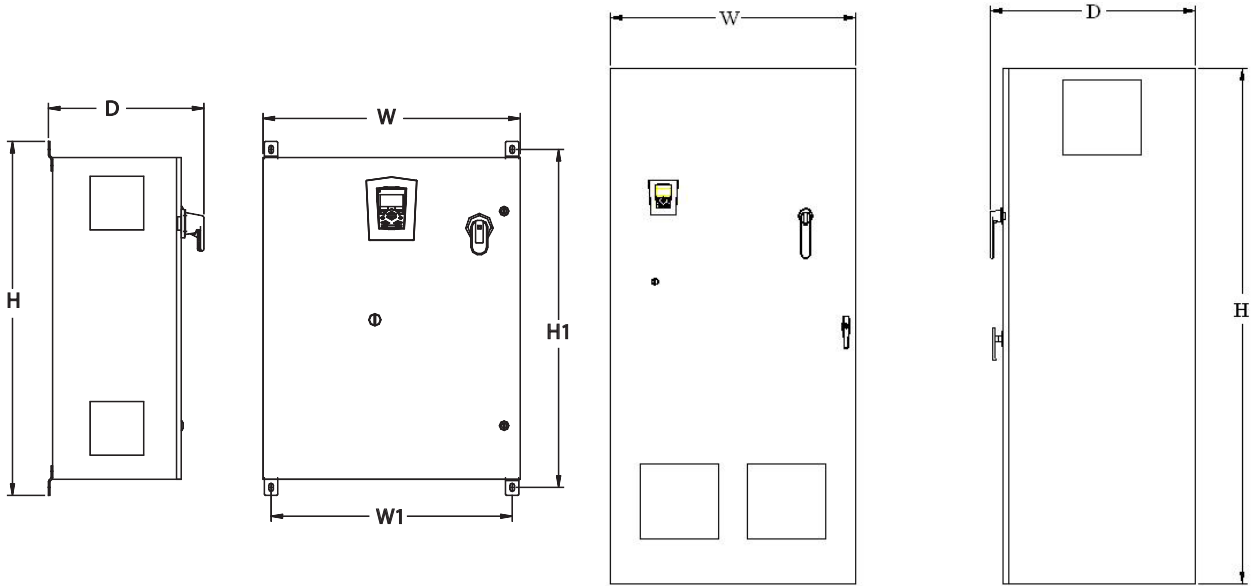
CX1-12 to CX1-13 Free Standing

	H1	W1	Height (H)	Width (W)	Depth (D)	Weight
CX1-1	920 [36.2]	208 [8.2]	948 [37.3]	348 [13.7]	349 [13.7]	35 [76]
CX1-2	920 [36.2]	208 [8.2]	948 [37.3]	348 [13.7]	349 [13.7]	37 [82]
CX1-3	1352 [53.2]	254 [10]	1380 [54.3]	414 [16.3]	371 [14.6]	49 [107]
CX1-4	1352 [53.2]	254 [10]	1380 [54.3]	414 [16.3]	371 [14.6]	61 [135]
CX1-5	1352 [53.2]	254 [10]	1380 [54.3]	414 [16.3]	371 [14.6]	76 [168]
CX1-6	1568 [61.7]	330 [13]	1596 [62.8]	491 [19.3]	489 [19.2]	90 [198]
CX1-7	1568 [61.7]	330 [13]	1596 [62.8]	491 [19.3]	489 [19.2]	119 [262]
CX1-8	1568 [61.7]	330 [13]	1596 [62.8]	491 [19.3]	489 [19.2]	154 [339]
CX1-9	Free Standing	Free Standing	18 [74.1]	889 [35]	527 [20.7]	126 [277]
CX1-10	Free Standing	Free Standing	18 [74.1]	889 [35]	527 [20.7]	190 [418]
CX1-11	Free Standing	Free Standing	18 [72]	914 [36]	584 [23]	247 [543]
CX1-12	Free Standing	Free Standing	21 [84]	914 [36]	847 [33.4]	579 [1273]
CX1-13	Free Standing	Free Standing	21 [84]	1524 [60]	847 [33.4]	662 [1456]

CX1-9 through CX1-11 are a wall mount configuration with 12 inch high mounting feet. Feet are removable.

Allow 4-6 inches between enclosures for venting.

Dimensions: ACS550-CC NEMA 12 R1 through R8 Frame Size

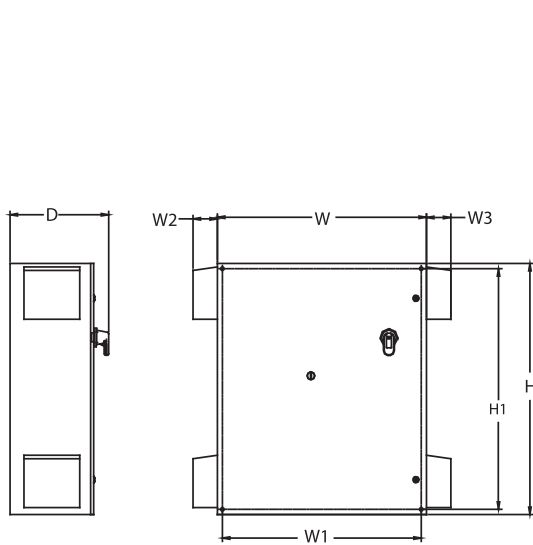


CX12-1 to CX12-10	Wall Mounted	Free Standing	Height (H)				standing
CX12-1	648 [25.5]	419 [16.5]	686 [27]	457 [18]	369 [14.5]	36 [78]	
CX12-2	648 [25.5]	419 [16.5]	686 [27]	457 [18]	369 [14.5]	38 [84]	
CX12-3	800 [31.5]	572 [22.5]	838 [33]	610 [24]	369 [14.3]	51 [113]	
CX12-4	800 [31.5]	572 [22.5]	838 [33]	610 [24]	369 [14.3]	64 [141]	
CX12-5	953 [37.5]	724 [28.5]	991 [39]	762 [30]	369 [14.3]	78 [172]	
CX12-6	953 [37.5]	724 [28.5]	991 [39]	762 [30]	369 [14.3]	93 [205]	
CX12-7	1257 [49.5]	724 [28.5]	1304 [51.4]	914 [36]	572 [22.5]	118 [259]	
CX12-8	1257 [49.5]	724 [28.5]	1304 [51.4]	914 [36]	572 [22.5]	147 [323]	
CX12-9	1257 [49.5]	724 [28.5]	1304 [51.4]	914 [36]	572 [22.5]	182 [400]	
CX12-10	Free Standing	Free Standing	1829 [72]	914 [36]	584 [23]	247 [543]	
CX12-11	Free Standing	Free Standing	2134 [84]	914 [36]	847 [33.4]	579 [1273]	
CX12-12	Free Standing	Free Standing	2134 [84]	1524 [60]	847 [33.4]	662 [1456]	

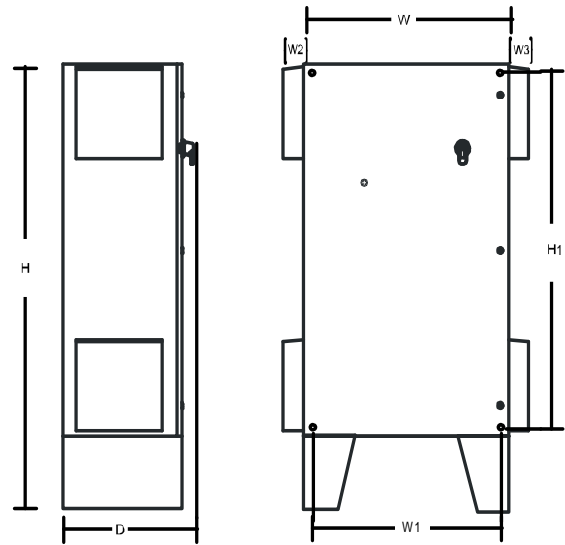
CX3R-10 is a wall mount configuration with 12 inch high mounting feet. Feet are removable.

CX3R-12 enclosure is double door construction. Allow 4-6 inches between enclosures for venting.

Dimensions: ACS550-CC NEMA 3R R1 through R6 Frame Size



CX3R-1 to CX3R-9 Wall Mounted



CX3R-10 Free Standing

	H1	W1	Height (H)	Width (W)	Width (W2)	Width (W3)	Depth (D)	Weight
CX3R-1	572 [22.5]	419 [16.5]	610 [24]	457 [18]	89 [3.5]	N/A N/A	359 [14.1]	37 [82]
CX3R-2	572 [22.5]	419 [16.5]	610 [24]	457 [18]	89 [3.5]	N/A N/A	359 [14.1]	40 [88]
CX3R-3	724 [28.5]	572 [22.5]	762 [30]	610 [24]	89 [3.5]	N/A N/A	359 [14.1]	53 [117]
CX3R-4	724 [28.5]	572 [22.5]	762 [30]	610 [24]	89 [3.5]	N/A N/A	359 [14.1]	66 [145]
CX3R-5	876 [34.5]	725 [28.5]	914 [36]	762 [30]	89 [3.5]	89 [3.5]	359 [14.1]	82 [180]
CX3R-6	876 [34.5]	725 [28.5]	914 [36]	762 [30]	89 [3.5]	89 [3.5]	359 [14.1]	97 [213]
CX3R-7	1181 [46.5]	876 [34.5]	1219 [48]	914 [36]	89 [3.5]	89 [3.5]	562 [22.1]	121 [267]
CX3R-8	1181 [46.5]	876 [34.5]	1219 [48]	914 [36]	89 [3.5]	89 [3.5]	562 [22.1]	151 [331]
CX3R-9	1181 [46.5]	876 [34.5]	1219 [48]	914 [36]	89 [3.5]	89 [3.5]	562 [22.1]	186 [408]
CX3R-10	Free Standing	Free Standing	1829 [72]	914 [36]	89 [3.5]	89 [3.5]	584 [23]	251 [553]

CX3R-10 is a wall mount configuration with 12 inch high mounting feet. Feet are removable.

По вопросам продаж и поддержки обращайтесь:

Самары (7273)495-231
Ангарск (3955)60-70-56
Архангельск (8182)63-90-72
Астрахань (8512)99-46-04
Барнаул (3852)73-04-60
Белгород (4722)40-23-64
Благовещенск (4162)22-76-07
Брянск (4832)59-03-52
Владивосток (423)249-28-31
Владикавказ (8672)28-90-48
Владимир (4922)49-43-18
Волгоград (844)278-03-48
Вологда (8172)26-41-59
Воронеж (473)204-51-73
Екатеринбург (343)384-55-89
Иваново (4932)77-34-06
Ижевск (3412)26-03-58
Иркутск (395)279-98-46
Казань (843)206-01-48

Калининград (4012)72-03-81
Калуга (4842)92-23-67
Кемерово (3842)65-04-62
Киров (8332)68-02-04
Коломна (4966)23-41-49
Кострома (4942)77-07-48
Краснодар (861)203-40-90
Красноярск (391)204-63-61
Курган (3522)50-90-47
Курск (4712)77-13-04
Липецк (4742)52-20-81
Магнитогорск (3519)55-03-13
Москва (495)268-04-70
Мурманск (8152)59-64-93
Набережные Челны (8552)20-53-41
Нижний Новгород (831)429-08-12
Новокузнецк (3843)20-46-81
Новосибирск (383)227-86-73
Ноябрьск (3496)41-32-12

Омск (3812)21-46-40
Орел (4862)44-53-42
Оренбург (3532)37-68-04
Пенза (8412)22-31-16
Пермь (342)205-81-47
Петрозаводск (8142)55-98-37
Псков (8112)59-10-37
Ростов-на-Дону (863)308-18-15
Рязань (4912)46-61-64
Самара (846)206-03-16
Санкт-Петербург (812)309-46-40
Саранск (8342)22-96-24
Саратов (845)249-38-78
Севастополь (8692)22-31-93
Симферополь (3652)67-13-56
Смоленск (4812)29-41-54
Сочи (862)225-72-31
Ставрополь (8652)20-65-13
Сургут (3462)77-98-35

Сыктывкар (8212)25-95-17
Тамбов (4752)50-40-97
Тверь (4822)63-31-35
Тольятти (8482)63-91-07
Томск (3822)98-41-53
Тула (4872)33-79-87
Тюмень (3452)66-21-18
Улан-Удэ (3012)59-97-51
Ульяновск (8422)24-23-59
Уфа (347)229-48-12
Хабаровск (4212)92-98-04
Чебоксары (8352)28-53-07
Челябинск (351)202-03-61
Череповец (8202)49-02-64
Чита (3022)38-34-83
Якутск (4112)23-90-97
Ярославль (4852)69-52-93

Россия +7(495)268-04-70

Казахстан +7(7172)727-132

Киргизия +996(312)96-26-47

<https://abbdrives.nt-rt.ru/> || aei@nt-rt.ru